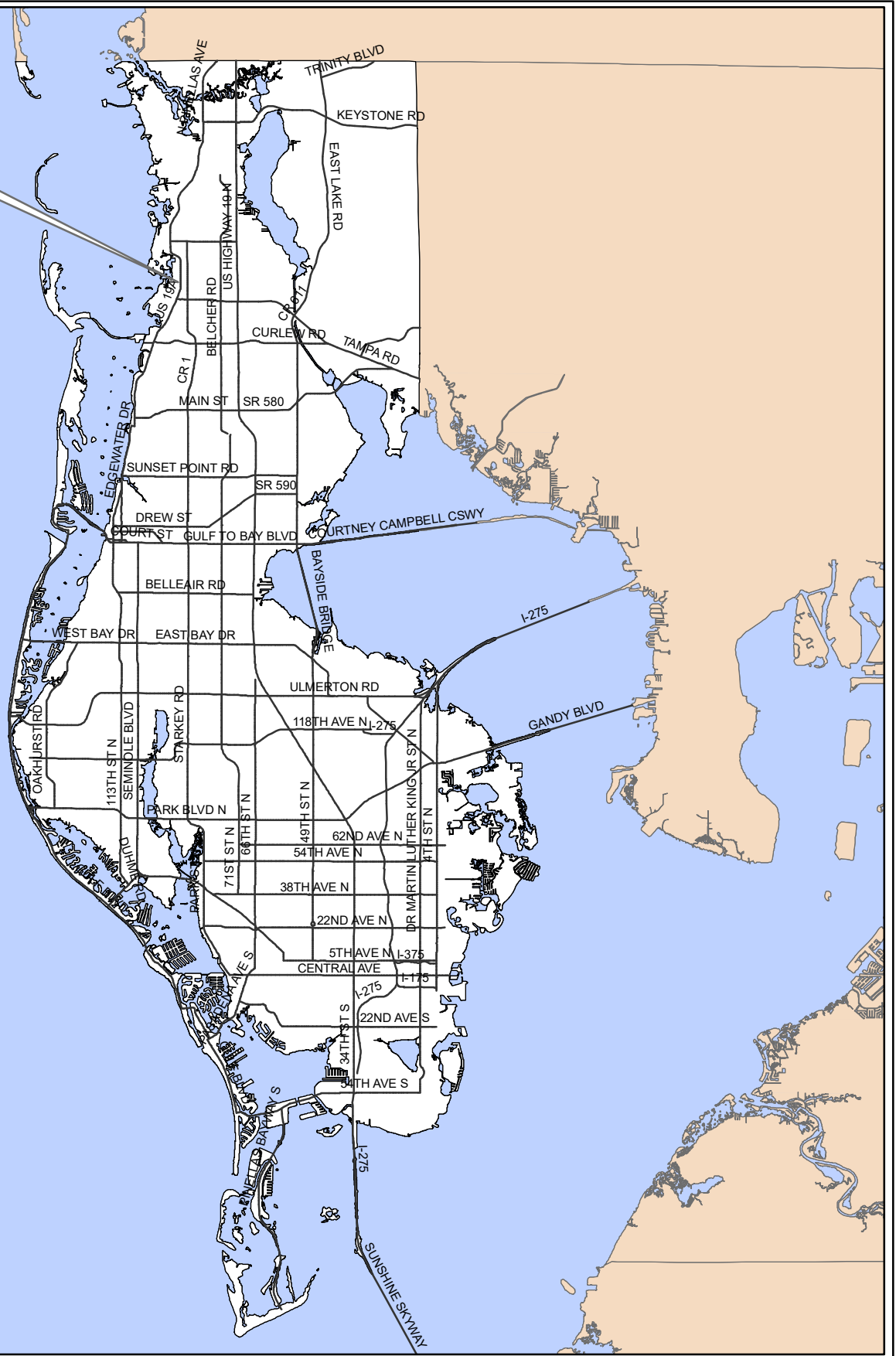


ZON-22-07



Surrounding Counties

ZON-22-07

Location Map

From: C-1, Neighborhood Commercial Zoning

To: C-2-CO, General Commercial & Services - Conditional Overlay
 With the Conditional Overlay limiting the uses to motor vehicle sales and all uses allowed by the C-1 zoning district.



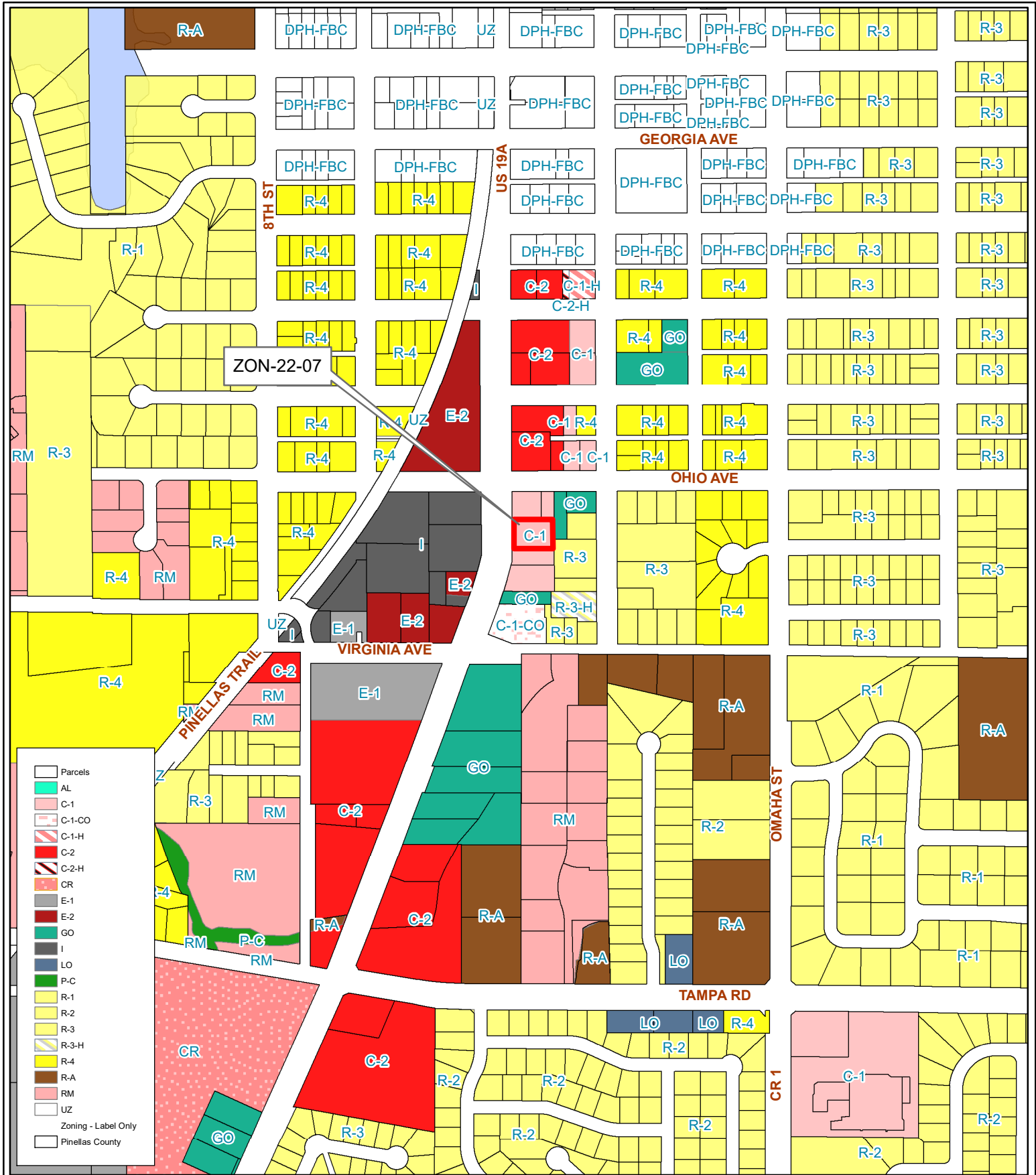
01/28/15/88560/148/0014

Prepared by: Housing & Community Development Department



Date: 10/6/2022

1 inch = 4.5 miles



- Parcels
- AL
- C-1
- C-1-CO
- C-1-H
- C-2
- C-2-H
- CR
- E-1
- E-2
- GO
- I
- LO
- P-C
- R-1
- R-2
- R-3
- R-3-H
- R-4
- R-A
- RM
- UZ
- Zoning - Label Only
- Pinellas County

ZON-22-07

Current Zoning

From: C-1, Neighborhood Commercial
Zoning
To: C-2-CO, General Commercial & Services - Conditional Overlay
 With the Conditional Overlay limiting the uses to motor vehicle sales and all uses allowed by the C-1 zoning district.



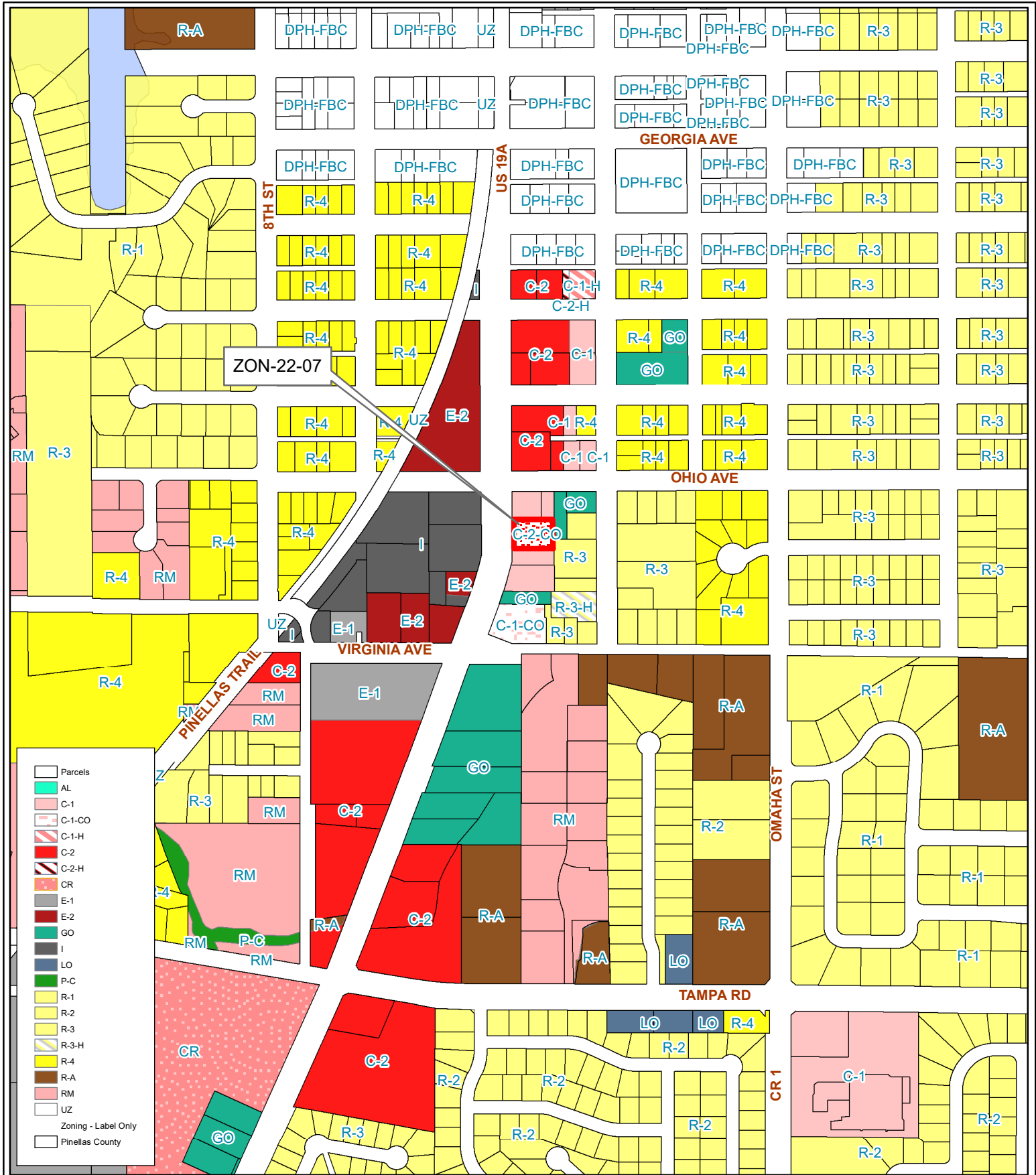
01/28/15/88560/148/0014

Prepared by: Housing & Community Development Department



Date: 10/6/2022

1 inch = 0.09 miles



- Parcels
- AL
- C-1
- C-1-CO
- C-1-H
- C-2
- C-2-H
- CR
- E-1
- E-2
- GO
- I
- LO
- P-C
- R-1
- R-2
- R-3
- R-3-H
- R-4
- R-A
- RM
- UZ
- Zoning - Label Only
- Pinellas County

ZON-22-07

Proposed Zoning

From: C-1, Neighborhood Commercial Zoning

To: C-2-CO, General Commercial & Services - Conditional Overlay
 With the Conditional Overlay limiting the uses to motor vehicle sales and all uses allowed by the C-1 zoning district.



01/28/15/88560/148/0014

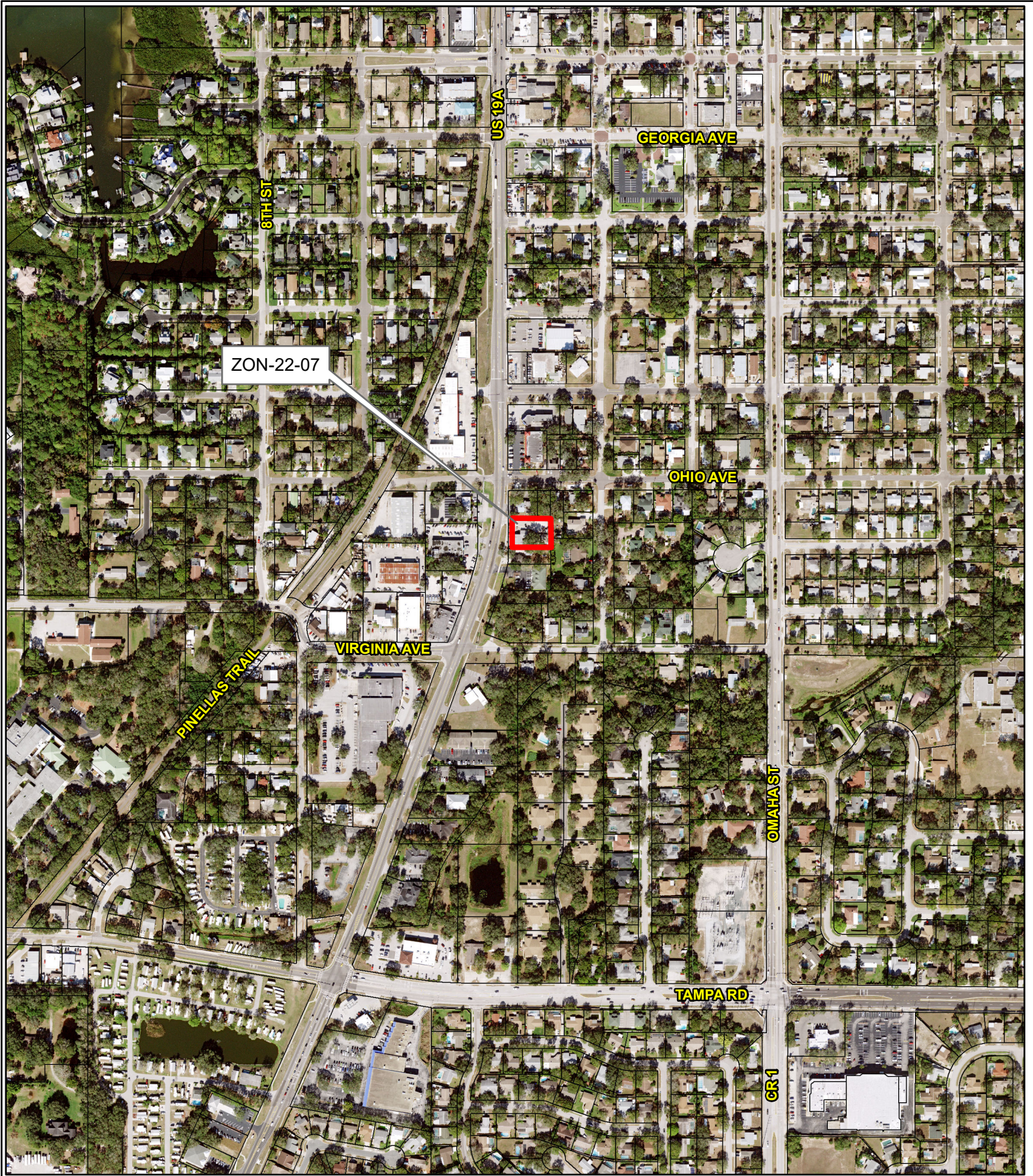
Prepared by: Housing & Community Development Department



Date: 10/6/2022

Housing & Community Development

1 inch = 0.09 miles



ZON-22-07

Aerial Map

From: C-1, Neighborhood Commercial Zoning

To: C-2-CO, General Commercial & Services - Conditional Overlay
 With the Conditional Overlay limiting the uses to motor vehicle sales and all uses allowed by the C-1 zoning district.



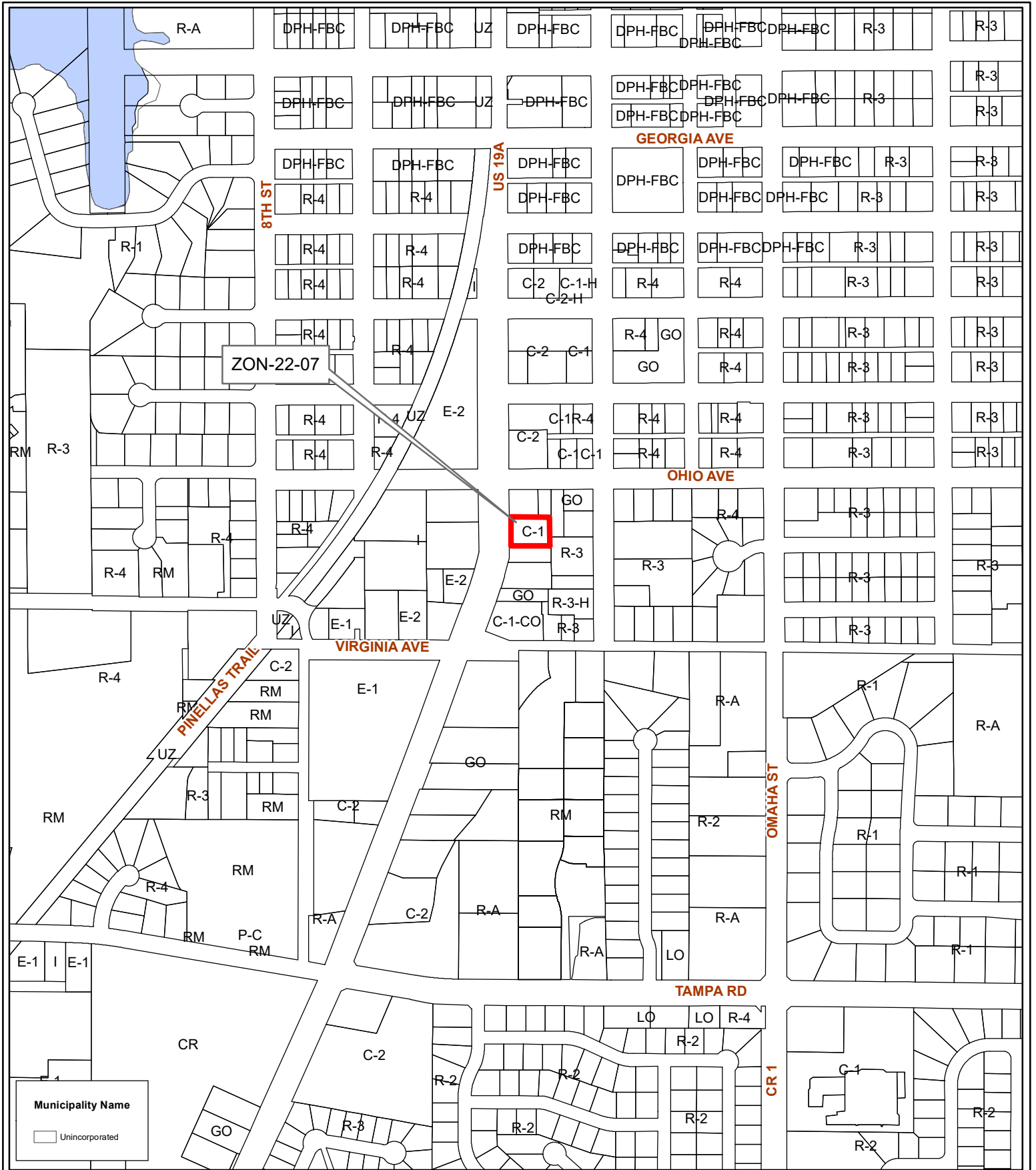
01/28/15/88560/148/0014

Prepared by: Housing & Community Development Department



Date: 10/6/2022

1 inch = 0.09 miles



ZON-22-07

C-1

Municipality Name
 Unincorporated

ZON-22-07
Municipal Map

From: C-1, Neighborhood Commercial Zoning
To: C-2-CO, General Commercial & Services - Conditional Overlay
 With the Conditional Overlay limiting the uses to motor vehicle sales and all uses allowed by the C-1 zoning district.



01/28/15/88560/148/0014

Prepared by: Housing & Community Development Department



Date: 10/6/2022

1 inch = 0.09 miles