

MEDICAL EXAMINER
District Six

Pasco & Pinellas Counties



10900 Ulmerton Road
Largo, FL 33778
727-582-6800
(Fax 727-582-6820)
www.pinellascounty.org/forensics

YEAR 2015

MEDICAL EXAMINER

ANNUAL REPORT

Published 6/30/2016

TABLE OF CONTENTS

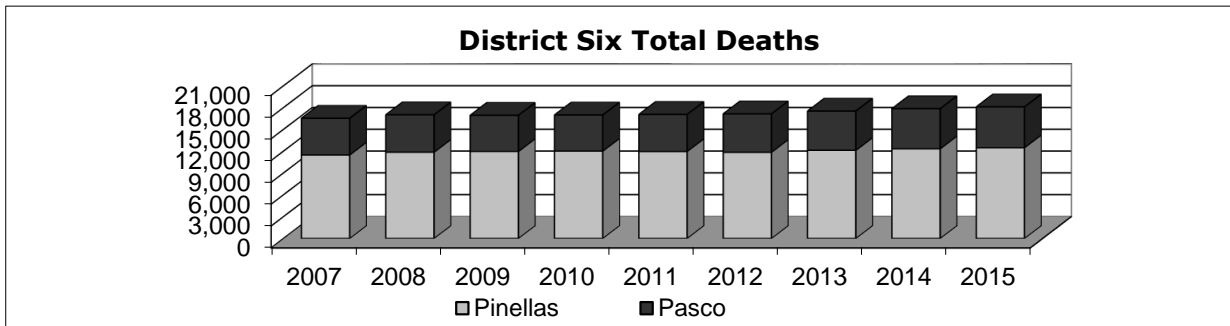
Section:	Page #:
Population, District Deaths, Cases Accepted	3
Workload by Type of Examination	4
Scenes Investigated, Persons Transported	5
Deaths By Manner of Death	6
Homicide Investigations	7
Suicide Investigations	8
Accidental Deaths, Motor Vehicle Deaths	9 - 11
Accidental Deaths, Non-Motor Vehicle Related	12
Infant Deaths	13 - 15
Infant & Child Deaths (age 1-17)	15
Drowning Deaths	16
Toxicology - Drug Positive & Drug Cause of Death	17 - 19
Unidentified Persons	20
Indigent / Unclaimed Persons	21
Organ & Tissue Donation	21
Exhumations	21

	2007	2008	2009	2010	2011	2012	2013	2014	2015
Population *									
Pinellas	917,437	940,645	931,113	916,542	917,398	920,381	926,610	933,258	944,971
Pasco	462,715	441,188	438,668	464,697	466,457	468,562	473,566	479,340	487,588
Total	1,380,152	1,381,833	1,369,781	1,381,239	1,383,855	1,388,943	1,400,176	1,412,598	1,432,559

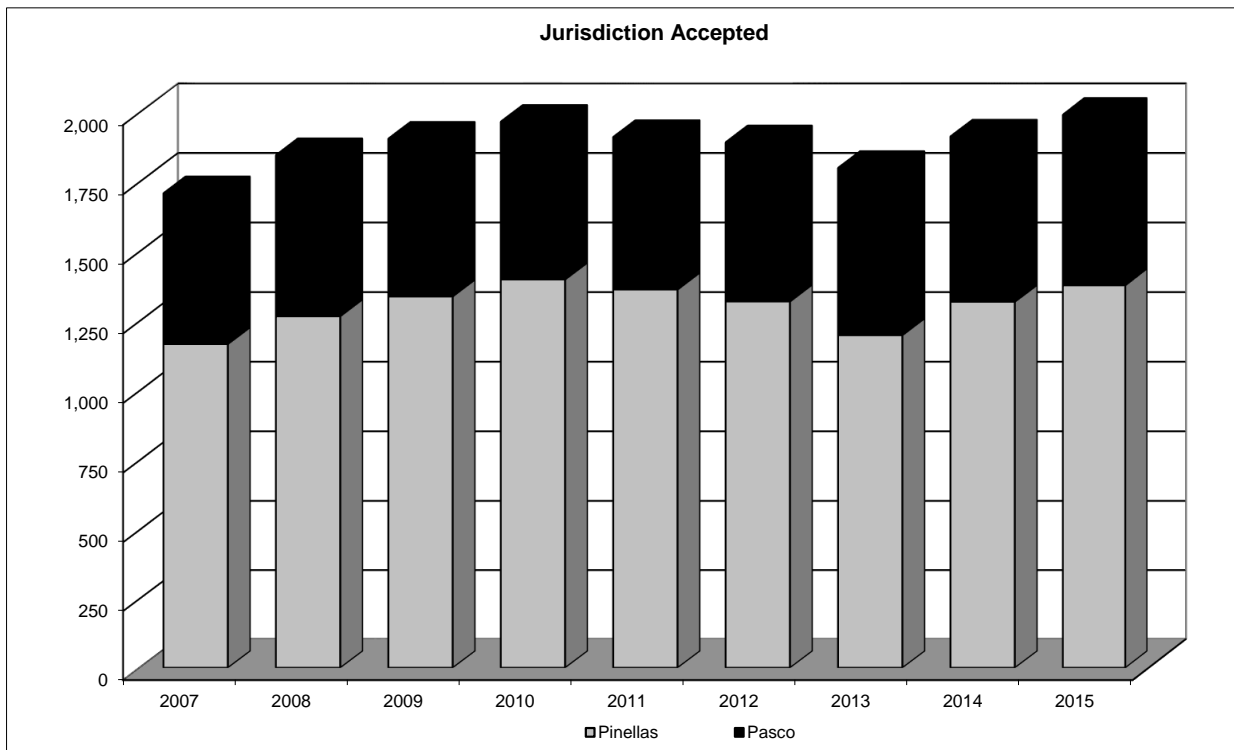
* SOURCE: University of Florida Bureau of Economic and Business Research. (<http://www.bebr.ufl.edu/population>)

	2007	2008	2009	2010	2011	2012	2013	2014	2015
District Deaths *									
Pinellas	11,484	11,859	11,968	12,012	11,961	11,850	12,122	12,327	12,486
Pasco	5,053	5,161	4,978	4,981	5,104	5,294	5,411	5,530	5,623
Total	16,537	17,020	16,946	16,993	17,065	17,144	17,533	17,857	18,109

* SOURCE: Office of Vital Statistics, Florida Department of Health (<http://www.flpublichealth.com/VSBOOK/VSBOOK.aspx>)

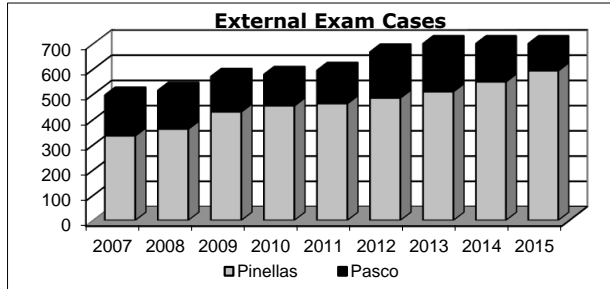
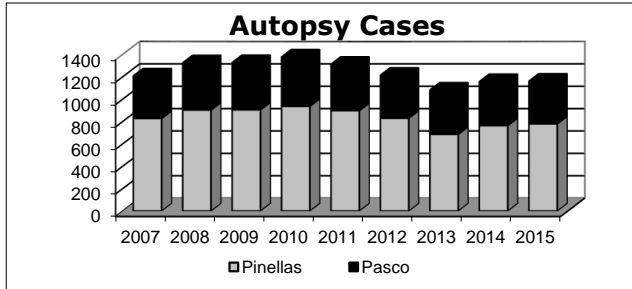


	2007	2008	2009	2010	2011	2012	2013	2014	2015
Cases Accepted									
Pinellas	1,168	1,268	1,339	1,400	1,364	1,321	1,200	1,320	1,379
Pasco	542	579	567	567	548	572	601	594	613
Total	1,710	1,847	1,906	1,967	1,912	1,893	1,801	1,914	1,992



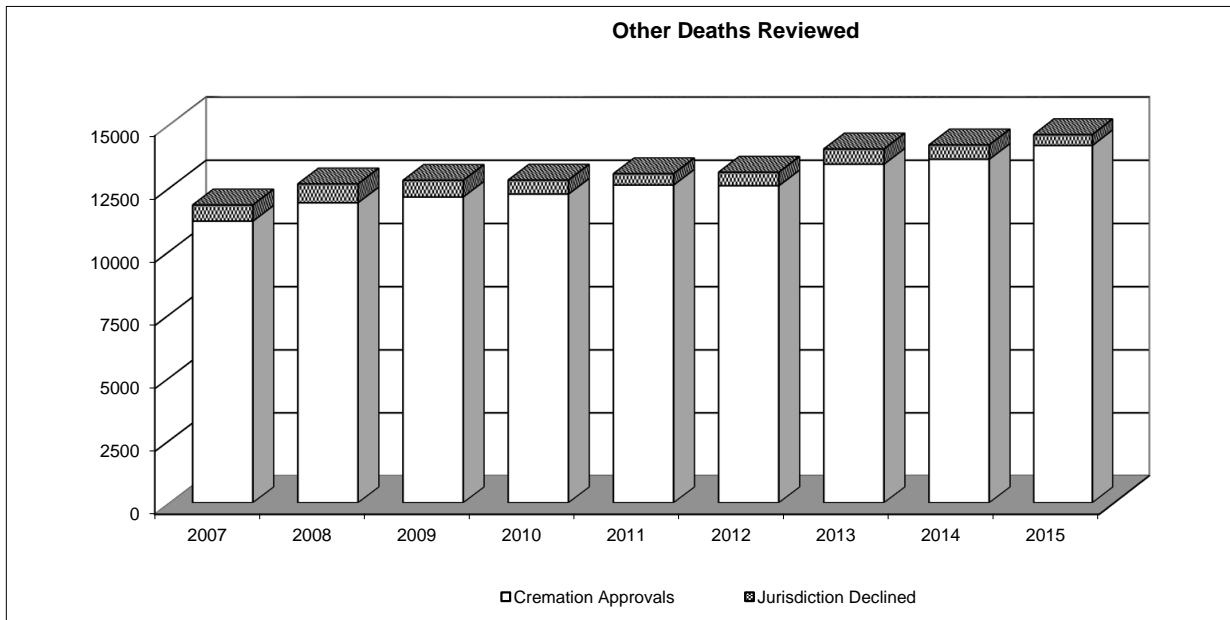
WORKLOAD BY TYPE OF EXAMINATION:

	2007	2008	2009	2010	2011	2012	2013	2014	2015
Autopsies									
Pinellas	827	902	904	935	897	829	685	763	779
(Partial Autopsies)	6	4	5	11	4	7	5	8	7
Pasco	380	423	423	442	415	385	396	394	382
(Partial Autopsies)	1	3	4	1	2	5	4	2	4
Total	1,214	1,332	1,336	1,389	1,318	1,226	1,090	1,167	1,172
External Exams									
Pinellas	335	362	430	454	463	485	510	549	593
Pasco	161	153	140	124	131	182	201	198	227
Total	496	515	570	578	594	667	711	747	820



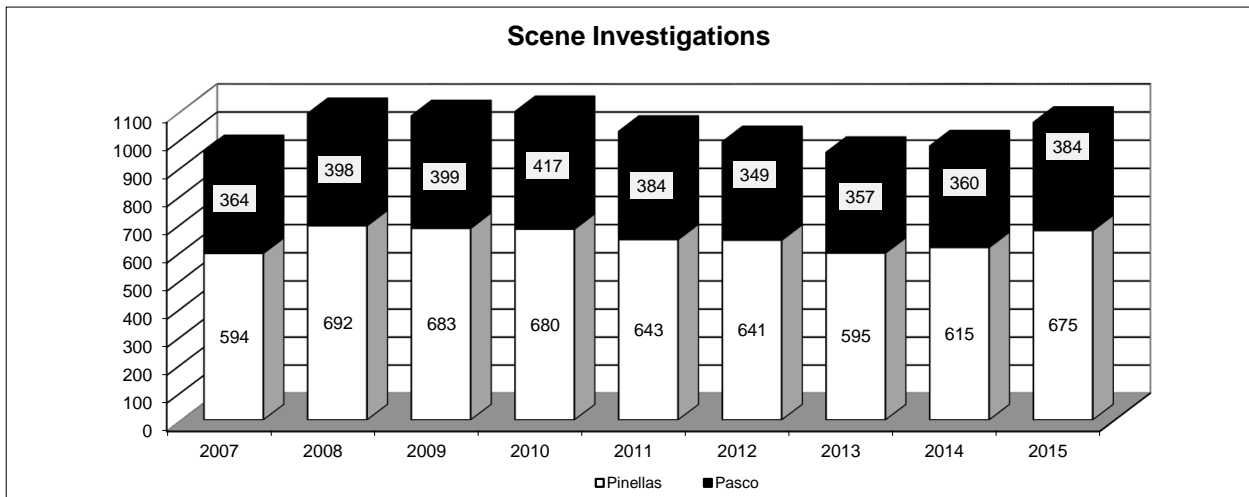
	2007	2008	2009	2010	2011	2012	2013	2014	2015
Cremation Approvals									
Pinellas	7,862	8,339	8,648	8,691	8,849	8,706	9,280	9,439	9,812
Pasco	3,309	3,560	3,479	3,549	3,750	3,866	4,146	4,178	4,349
Total	11,171	11,899	12,127	12,240	12,599	12,572	13,426	13,617	14,161

	2007	2008	2009	2010	2011	2012	2013	2014	2015
Jurisdiction Declined									
Pinellas	452	541	479	404	309	405	437	404	285
Pasco	188	204	178	151	139	130	163	166	145
Total	640	745	657	555	448	535	600	570	430

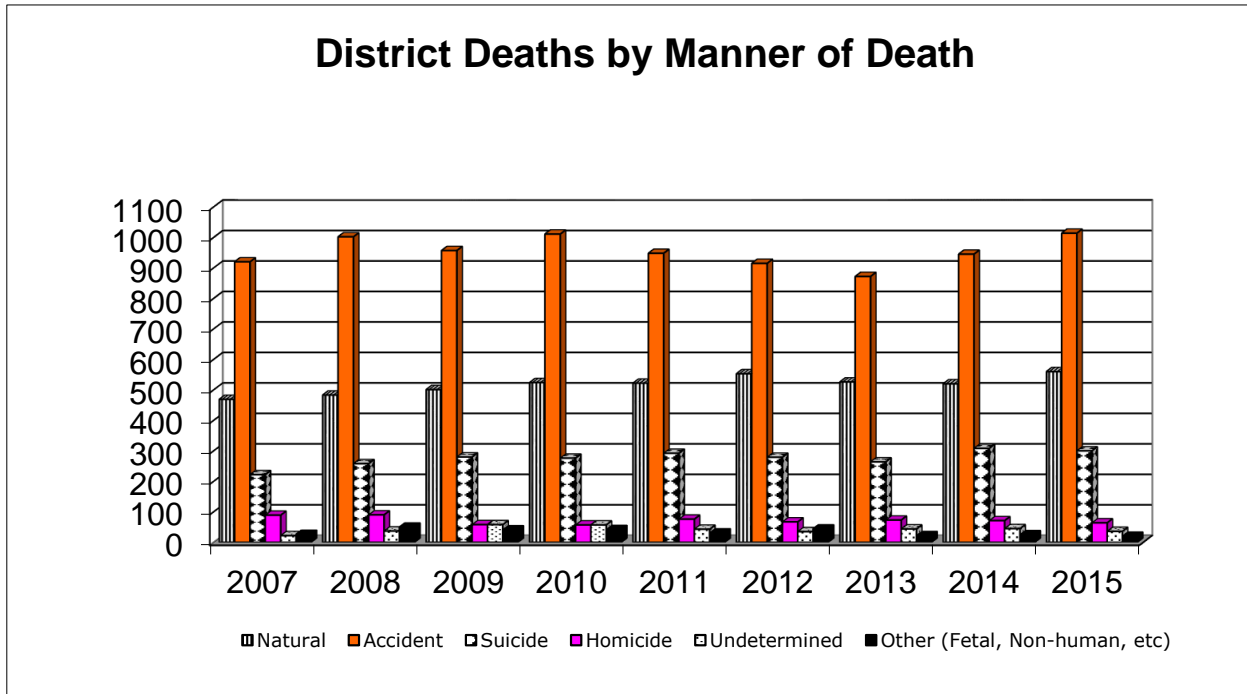


Decedent Transportation	2008	2009	2010	2011	2012	2013	2014	2015
Pinellas								
Medical Examiner Office	1258	1281	1340	1315	1256	1030	1008	1074
Tissue Banks	12	8	6	9	5	6	12	2
Other	42	34	25	25	37	16	16	15
Total Pinellas	1312	1323	1371	1349	1298	1052	1036	1091
Pasco								
Medical Examiner Office	581	561	562	548	560	538	492	517
Tissue Banks	0	1	0	0	3	6	5	4
Other	3	1	1	0	2	1	1	0
Total Pasco	584	563	563	548	565	545	498	521
District Total Transported	1,896	1,886	1,934	1,897	1,863	1,597	1,534	1,612

Scene Investigations	2007	2008	2009	2010	2011	2012	2013	2014	2015
Pinellas	594	692	683	680	643	641	595	615	675
Pasco	364	398	399	417	384	349	357	360	384
Total	958	1,090	1,082	1,097	1,027	990	952	975	1,059



District Deaths by Manner of Death	2007	2008	2009	2010	2011	2012	2013	2014	2015
Natural	469	483	501	524	522	553	526	520	560
Accident	920	1002	957	1011	948	915	872	945	1014
Suicide	222	258	280	276	292	279	264	308	300
Homicide	89	90	58	57	76	67	73	71	64
Undetermined	22	37	58	57	43	35	44	45	36
Other (Fetal, Non-human, etc)	26	50	41	42	31	44	22	25	20
Total	1,748	1,920	1,895	1,967	1,912	1,893	1,801	1,914	1,994

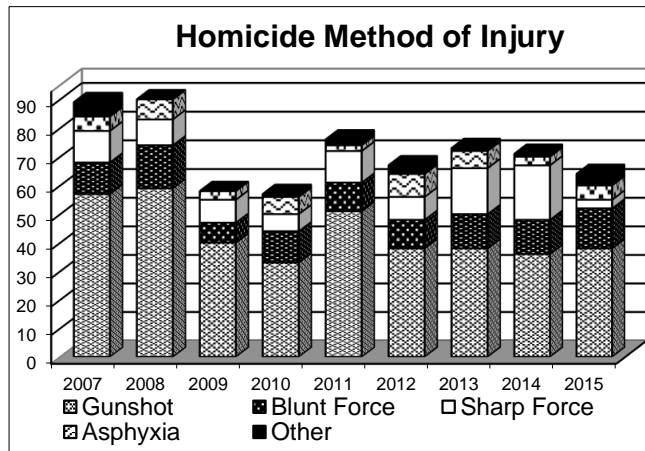
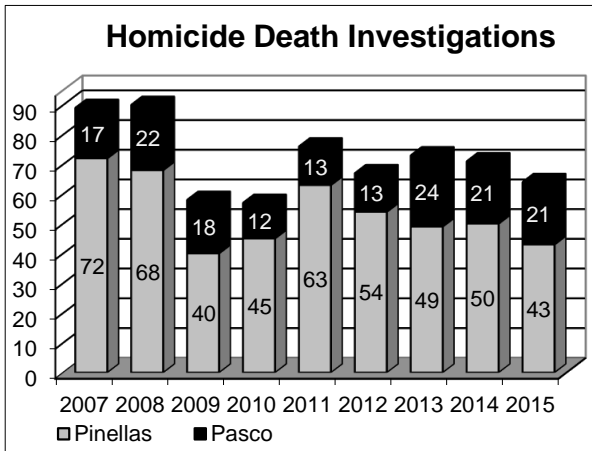


TOTAL VIOLENT DEATHS	2006	2007	2008	2009	2010	2011	2012	2013	2014	2015
	1,237	1,253	1,387	1,351	1,401	1,359	1,296	1,253	1,369	1,414

HOMICIDE DEATH INVESTIGATIONS

Homicides	2007	2008	2009	2010	2011	2012	2013	2014	2015
Pinellas	72	68	40	45	63	54	49	50	43
Pasco	17	22	18	12	13	13	24	21	21
Total	89	90	58	57	76	67	73	71	64

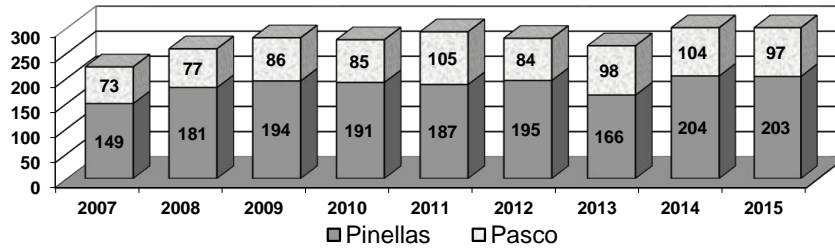
	2007	2008	2009	2010	2011	2012	2013	2014	2015
Gunshot	57	59	40	33	51	38	38	36	38
Blunt Force	11	15	7	11	10	10	12	12	14
Sharp Force	11	9	8	6	11	8	16	19	3
Asphyxia	5	7	3	6	2	8	6	3	5
Other	5	0	0	1	2	3	1	1	4



SUICIDE DEATH INVESTIGATIONS

	2007	2008	2009	2010	2011	2012	2013	2014	2015
Pinellas	149	181	194	191	187	195	166	204	203
Pasco	73	77	86	85	105	84	98	104	97
Total	222	258	280	277	292	279	264	308	300

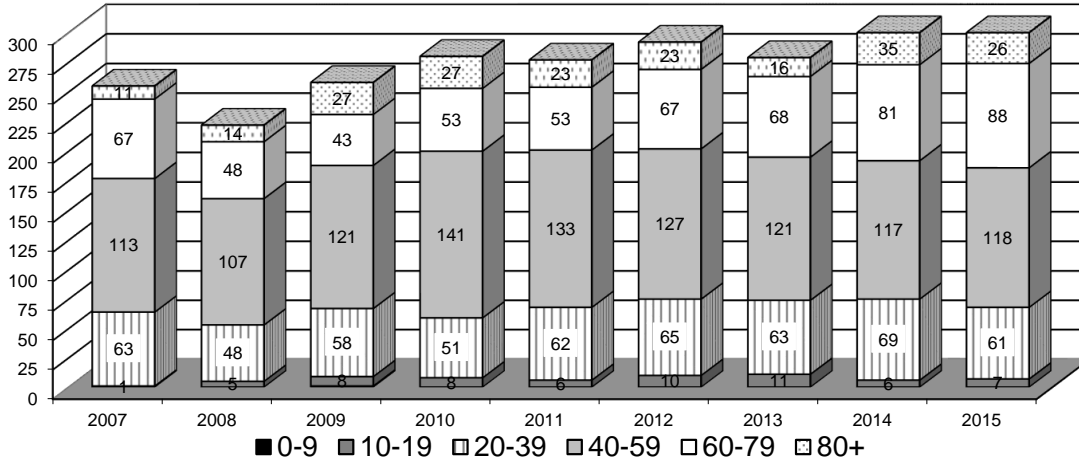
Suicide Death Investigations



SUICIDE GENDER	2007	2008	2009	2010	2011	2012	2013	2014	2015
Male	165	194	221	216	223	199	187	234	219
Female	57	64	59	60	69	80	77	74	81

Age Group	2007	2008	2009	2010	2011	2012	2013	2014	2015
0-9			1	0	0	0	0	0	0
10-19	1	5	8	8	6	10	11	6	7
20-39	63	48	58	51	62	65	63	69	61
40-59	113	107	121	141	133	127	121	117	118
60-79	67	48	43	53	53	67	68	81	88
80+	11	14	27	27	23	23	16	35	26
Total	255	222	258	280	277	292	279	308	300

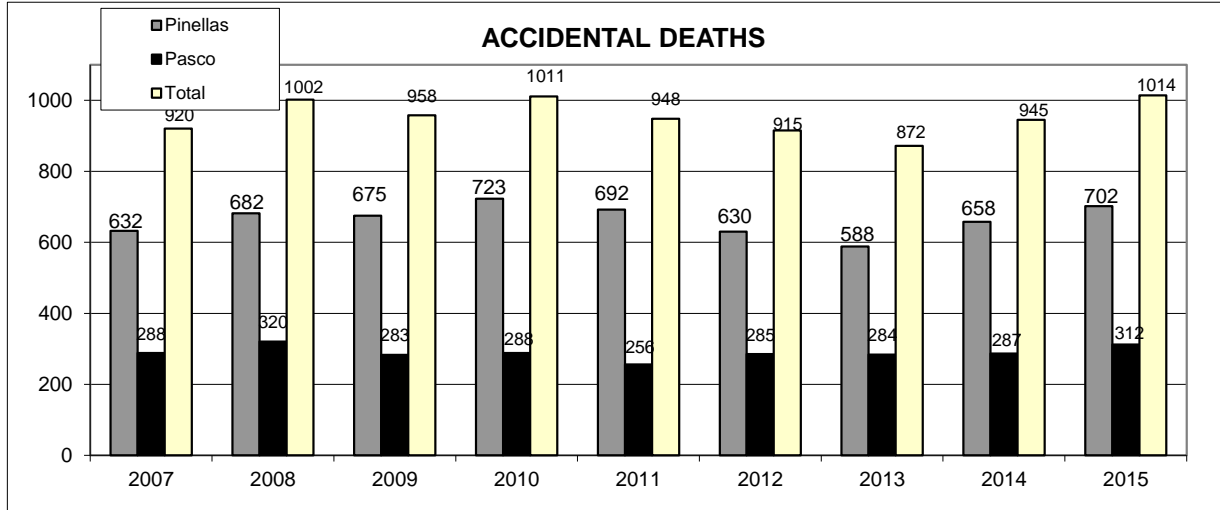
Suicide Deaths by Age Group



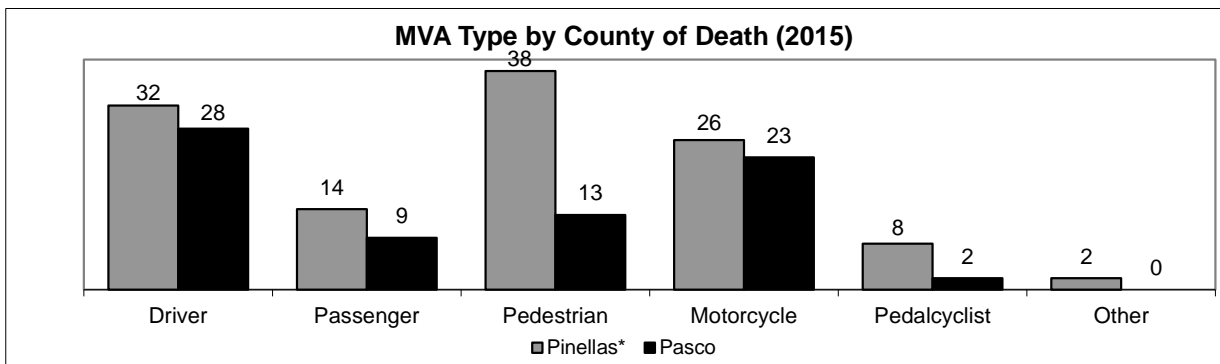
ACCIDENTAL DEATH INVESTIGATIONS

TOTAL ACCIDENTAL DEATHS (Motor Vehicle Accident (MVA) & Non-Motor Vehicle Accident)

	2007	2008	2009	2010	2011	2012	2013	2014	2015
Pinellas	632	682	675	723	692	630	588	658	702
Pasco	288	320	283	288	256	285	284	287	312
Total	920	1002	958	1011	948	915	872	945	1014



MOTOR VEHICLE DEATHS



Traffic Fatalities by County of Death for Year 2015

	Pinellas*	Pasco	District
Driver	32	28	60
Passenger	14	9	23
Pedestrian	38	13	51
Motorcycle	26	23	49
Pedalcyclis	8	2	10
Other	2	0	2
Totals:	120	75	195

* Includes victims that sustained injuries in counties other than Pinellas & Pasco, but were taken to trauma hospitals in the District and eventually died in Pinellas or Pasco from injuries sustained in the other county.

	2007	2008	2009	2010	2011	2012	2013	2014	2015
Driver	90	88	74	79	58	65	72	56	60
Passenger	46	30	25	28	20	28	24	25	23
Pedestrian	42	56	50	41	61	44	43	68	51
Motorcycle	57	55	37	41	46	40	32	45	49
Pedalcyclist	12	16	15	9	20	16	16	8	10
Other	4	4	7	6	4	5	1	0	2
Total	251	249	208	204	209	198	188	202	195

MOTOR VEHICLE DEATHS CONT..

DRIVERS	2007	2008	2009	2010	2011	2012	2013	2014	2015
Less than 20 Years of Age	10	6	4	1	3	2	2	1	5
20-29	17	18	15	12	11	16	10	15	4
30-39	6	16	6	9	4	5	5	11	7
40-49	11	14	7	13	5	4	11	4	8
50-59	18	7	11	10	11	9	14	8	7
60-69	7	5	8	11	5	8	13	9	7
70-79	6	14	11	9	10	9	6	1	10
80-89	12	7	10	10	6	11	8	6	8
90+	3	1	2	4	3	1	3	1	4
Totals	90	88	74	79	58	65	72	56	60

MOTOR VEHICLE FATALITY TYPE BY COUNTY OF INJURY

Pinellas County

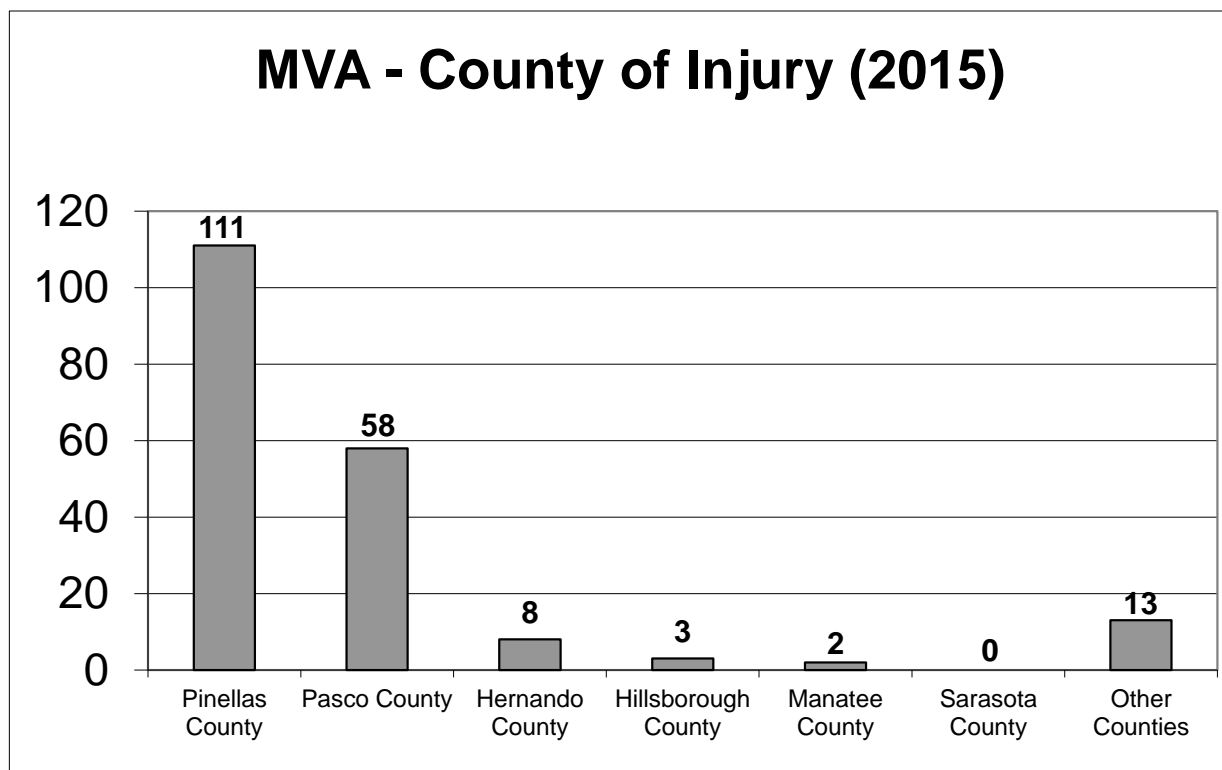
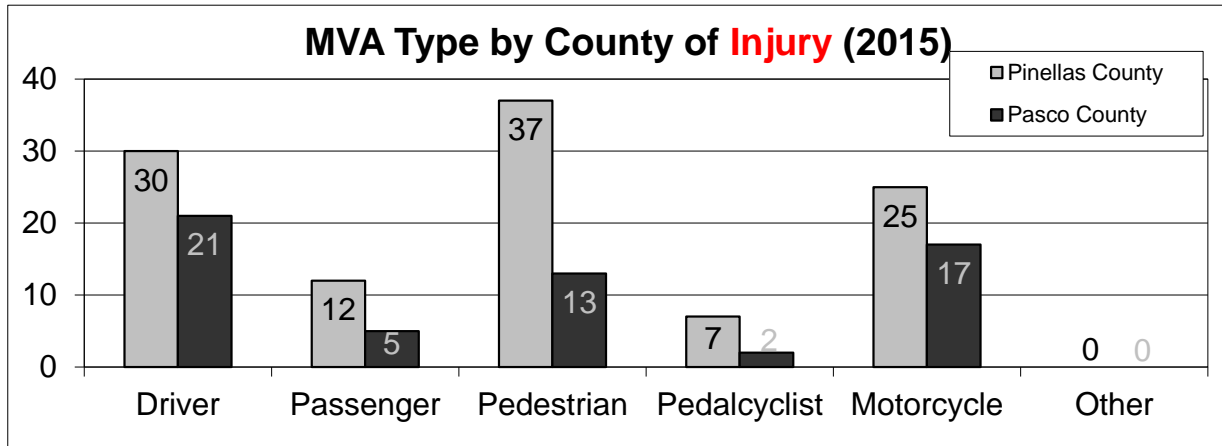
LOCATION	Driver	Passenger	Pedestrian	Pedalcyclist	Motorcycle	Other	Total
US 19	4	4	5	1	3	0	17
ALT 19	3	0	3	0	1	0	7
I-275	0	2	0	0	3	0	5
49th St. SP	0	0	0	0	1	0	1
McM-Booth	0	0	0	0	0	0	0
Gulf Blvd	0	0	2	0	0	0	2
Belcher	1	0	0	1	0	0	2
Starkey/Keene	1	0	0	0	1	0	2
Ulmerton	2	0	3	0	1	0	6
SR 60 G-B	1	1	3	0	1	0	6
Pk./Gandy Blv	0	0	0	1	2	0	3
All Others	18	5	21	4	12	0	60
Total	30	12	37	7	25	0	111

Pasco County

LOCATION	Driver	Passenger	Pedestrian	Pedalcyclist	Motorcycle	Other	Total
US 19	5	2	5	0	3	0	15
I-75	1	0	0	0	0	0	1
Suncoast	0	0	0	0	1	0	1
US 301	2	0	2	0	2	0	6
US 41	0	0	0	0	1	0	1
SR 52	0	0	1	0	1	0	2
SR 54	3	0	0	0	0	0	3
Little Road	2	1	1	0	2	0	6
All Others	8	2	4	2	7	0	23
Total	21	5	13	2	17	0	58

Out of District Location

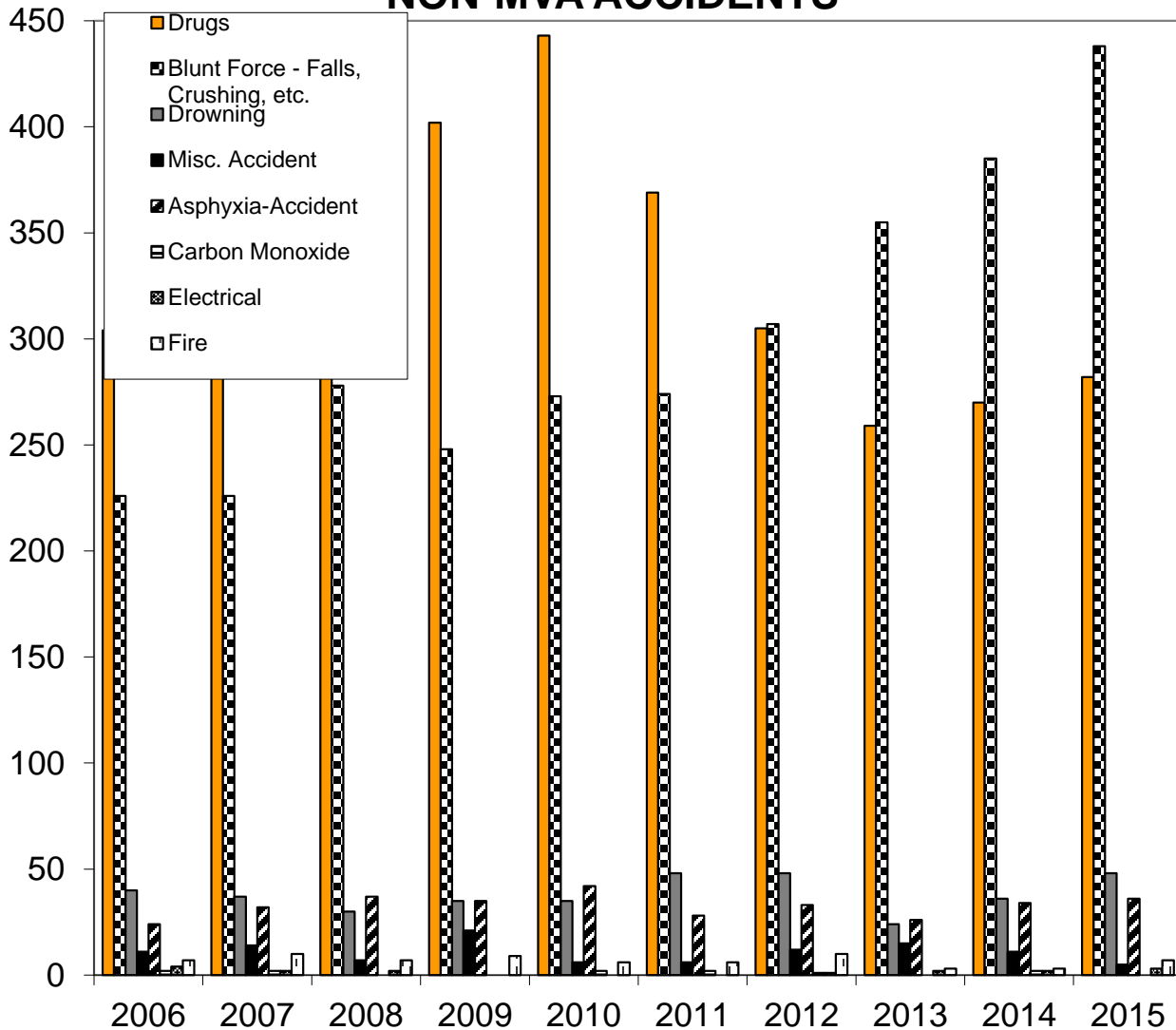
	Total
Hernando County	8
Hillsborough County	3
Manatee County	2
Sarasota County	0
Other Counties	13
Total	26



NON-MOTOR VEHICLE RELATED ACCIDENTS

	2006	2007	2008	2009	2010	2011	2012	2013	2014	2015
Drugs	304	346	392	402	443	369	305	259	270	282
Blunt Force - Falls, Crushing, etc.	226	226	278	248	273	274	307	355	385	438
Drowning	40	37	30	35	35	48	48	24	36	48
Misc. Accident	11	14	7	21	6	6	12	15	11	5
Asphyxia-Accident	24	32	37	35	42	28	33	26	34	36
Carbon Monoxide	2	2	0	0	2	2	1	0	2	0
Electrical	4	2	2	0	0	0	1	2	2	3
Fire	7	10	7	9	6	6	10	3	3	7
Total	618	669	753	750	807	733	717	684	743	819

NON-MVA ACCIDENTS



INFANT DEATHS									
---------------	--	--	--	--	--	--	--	--	--

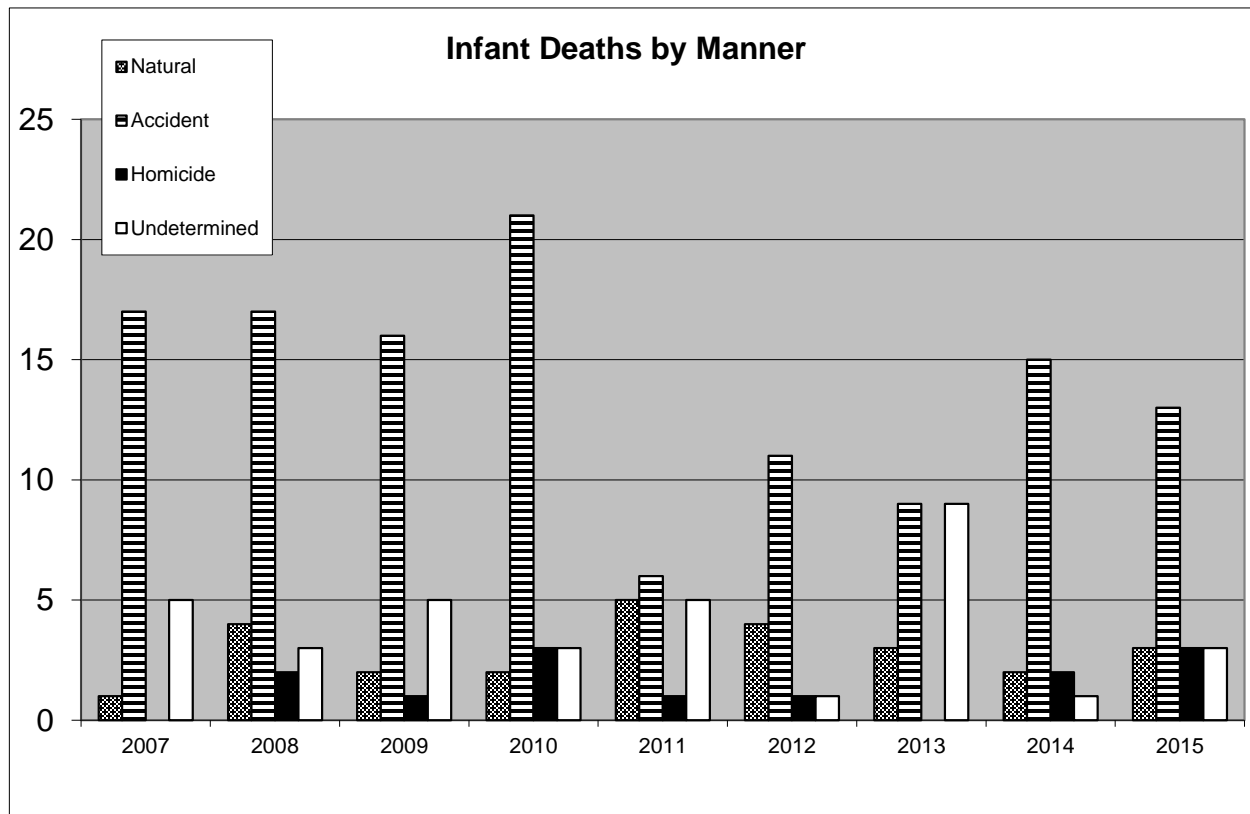
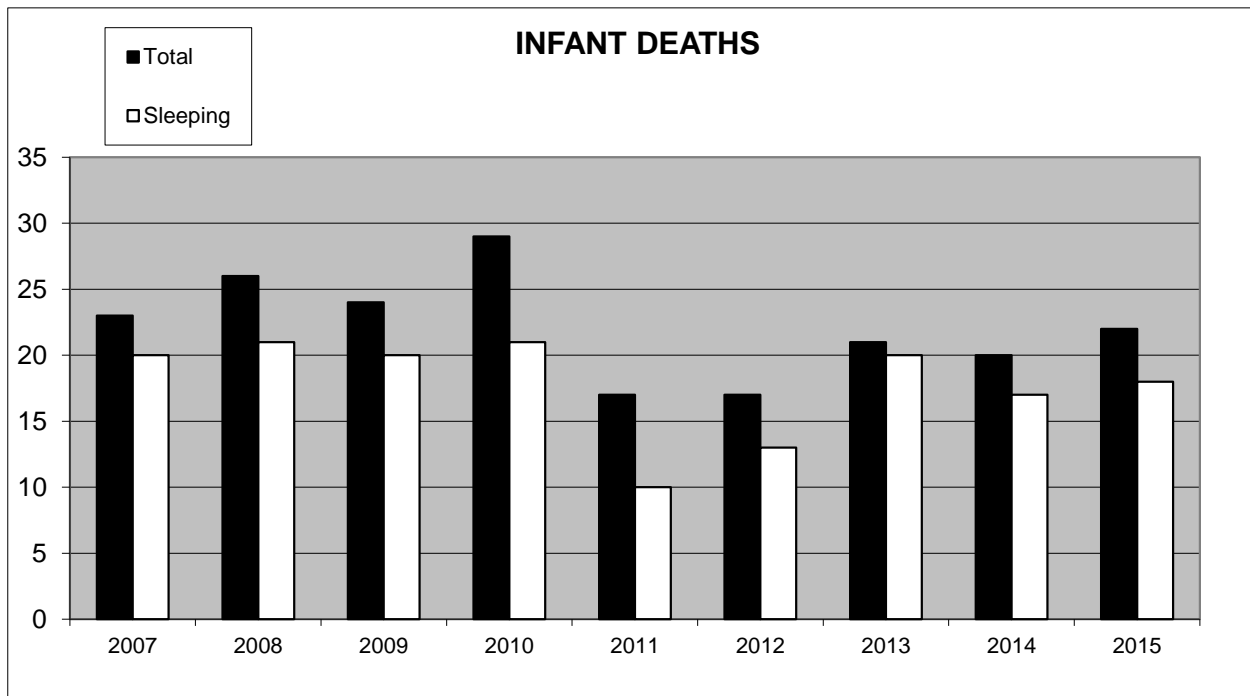
	2007	2008	2009	2010	2011	2012	2013	2014	2015
Total	23	26	24	29	17	17	21	20	22
Sleeping	20	21	20	21	10	13	20	17	18
% Sleeping	87.0%	80.8%	83.3%	72.4%	58.8%	76.5%	95.2%	85.0%	81.8%
Co-sleeping	13	13	10	14	5	6	9	9	10
Sleeping Alone Total	7	8	10	7	5	7	11	8	8
Alone on Stomach	4	6	7	4	3	4	8	3	3
Alone on Back	2	1	1	2	2	2	1	2	2
Alone Unknown	1	1	2	1	0	1	2	3	3
unknown/unclear	0	0	0	0	0	0	1	0	0
	2007	2008	2009	2010	2011	2012	2013	2014	2015
Natural	1	4	2	2	5	4	3	2	3
Accident	17	17	16	21	6	11	9	15	13
Homicide	0	2	1	3	1	1	0	2	3
Undetermined	5	3	5	3	5	1	9	1	3
Total	23	26	24	29	17	17	21	20	22

Of the 18 sleep associated infant deaths in 2015, only 2 of the infants died while reportedly sleeping in safe circumstances (alone, on their back, and on a device designed for infant sleeping), and those 2 infants died from bronchopneumonia. 10 of the infants died while sleeping with others (Co-Sleeping), and 3 died while put to sleep face down. 1 infant died after getting wedged between a pillow & armrest of a recliner.

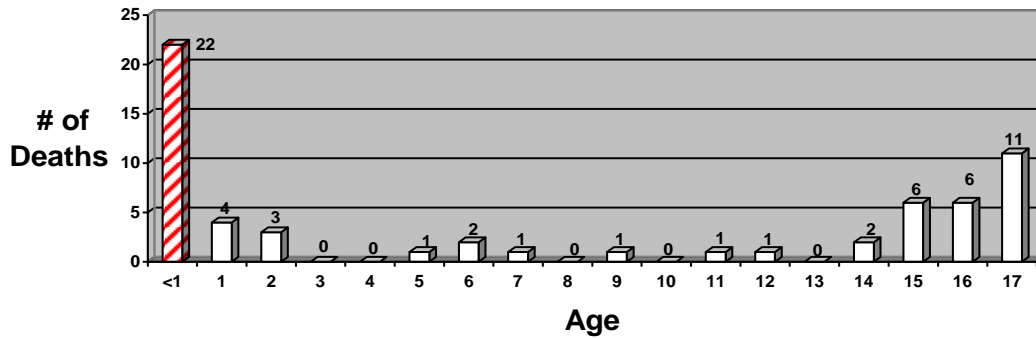
	2006	2007	2008	2009	2010	2011	2012	2013	2014	2015
SIDS *	0	0	0	0	0	0	0	0	0	0
Natural disease or illness	4	1	4	2	2	5	4	3	2	3
Asphyxia - Accident	14	14	17	15	17	5	10	9	14	12
Blunt force - Accident	0	1	0	1	1	0	0	0	2	0
Other Accident	3	2	0	0	3	1	1	0	0	1
Blunt force - Homicide	0	0	2	1	3	1	1	0	0	2
Undetermined	5	5	3	5	3	5	1	9	1	3
Other Homicide	2	0	0	0	0	0	0	0	1	1

* **Sudden Infant Death Syndrome (SIDS):** the death of an infant less than one year of age which remains unexplained after thorough case investigation, including performance of a complete autopsy, examination of the death scene, and review of the clinical history. Thus, SIDS is a diagnosis by exclusion. (Willinger et al, 1991).

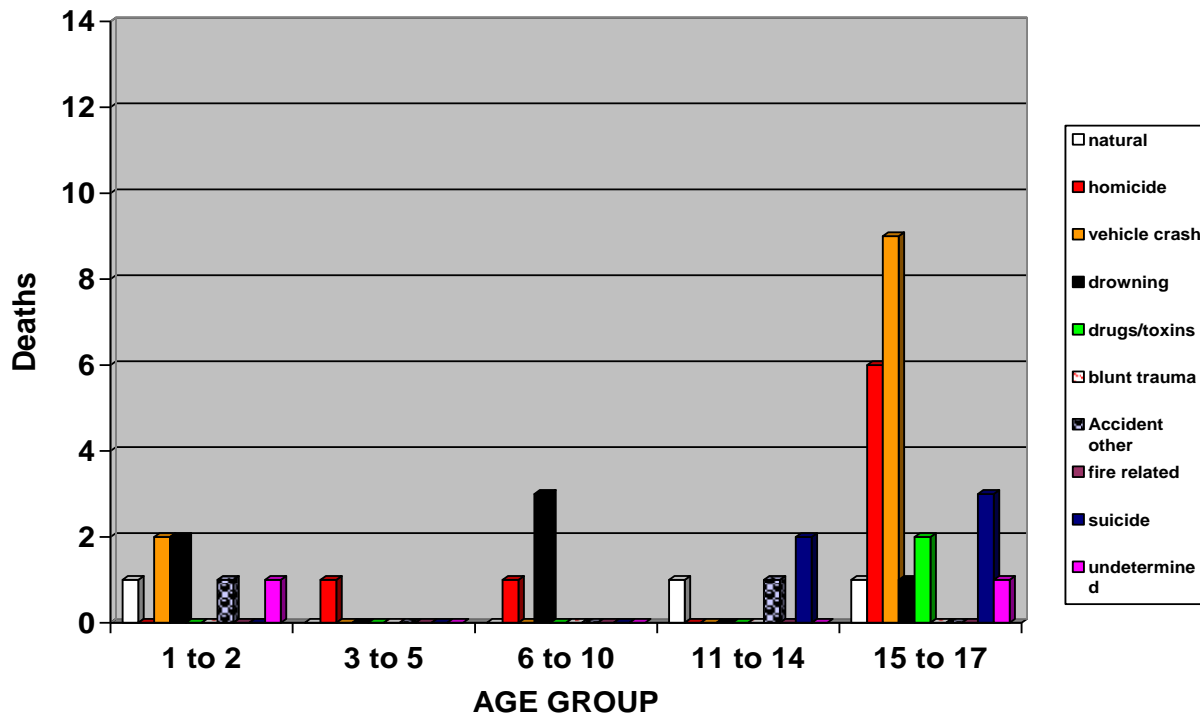
INFANT DEATHS CONT..



INFANT/CHILD DEATHS BY AGE (2015)



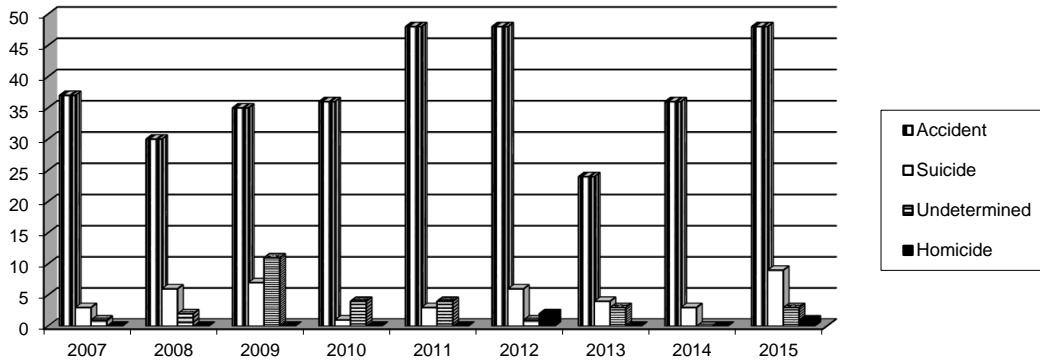
CHILD DEATHS BY TYPE (2015)



DROWNINGS BY MANNER OF DEATH

	2007	2008	2009	2010	2011	2012	2013	2014	2015
Accident	37	30	35	36	48	48	24	36	48
Suicide	3	6	7	1	3	6	4	3	9
Undetermined	1	2	11	4	4	1	3	0	3
Homicide	0	0	0	0	0	2	0	0	1

DROWNINGS BY MANNER



DROWNING BY AGE GROUP

	2007	2008	2009	2010	2011	2012	2013	2014	2015
0-10	6	3	8	10	8	12	1	3	7
11-30	6	5	7	3	3	3	4	4	3
31-50	10	12	15	11	15	12	7	10	14
51-70	13	9	16	10	15	17	15	14	23
71+	6	9	7	7	14	13	4	8	14

DROWNING AGE 0-5 YEARS

Pool	4	3	6	9	7	7	1	2	2
Bathtub	0	0	2	1	0	1	0	0	0
Other	0	0	0	0	1	1	0	1	2

ACCIDENTAL DROWNING BY LOCATION

Swimming Pool	16	6	18	17	22	16	8	10	19
Gulf waters	6	13	13	10	15	14	5	13	12
Lake/Pond	5	8	9	4	3	3	2	5	5
Tampa Bay waters	5	1	2	0	2	2	1	2	2
Bathtub	2	2	6	4	2	3	1	1	1
Spa	1	0	2	1	0	0	1	1	2
Canal	1	0	1	0	1	3	3	1	1
River	0	0	1	0	2	0	2	1	3
Other Misc.	1	0	1	0	1	7	1	2	3
Total	37	30	53	36	48	48	24	36	48

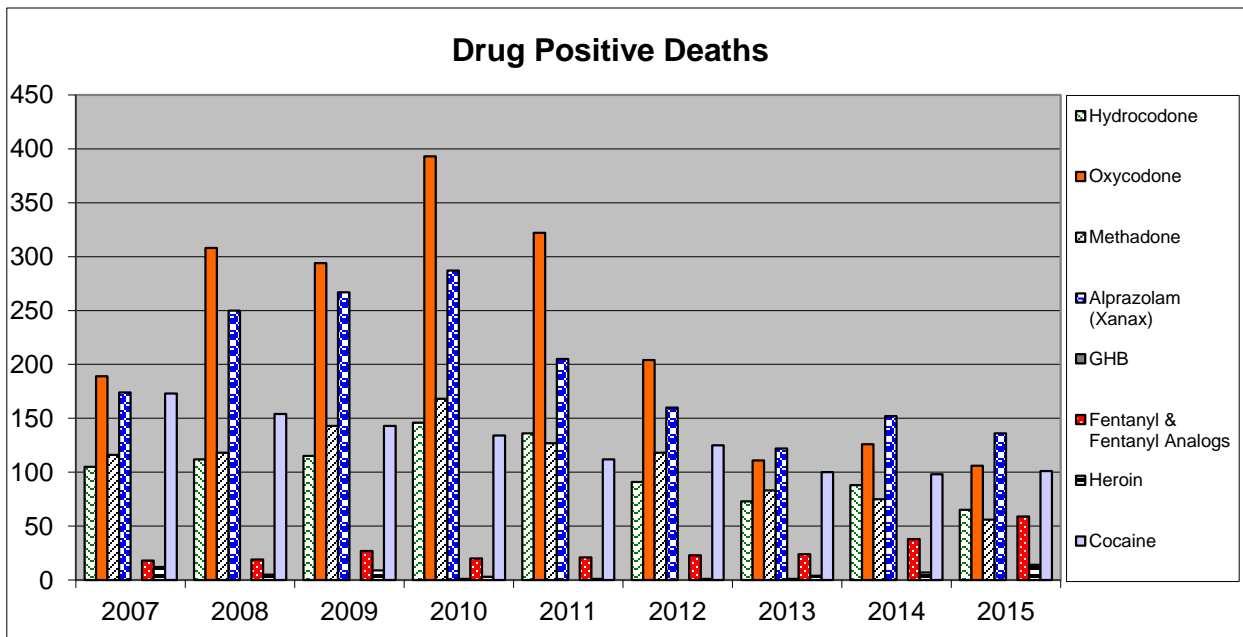
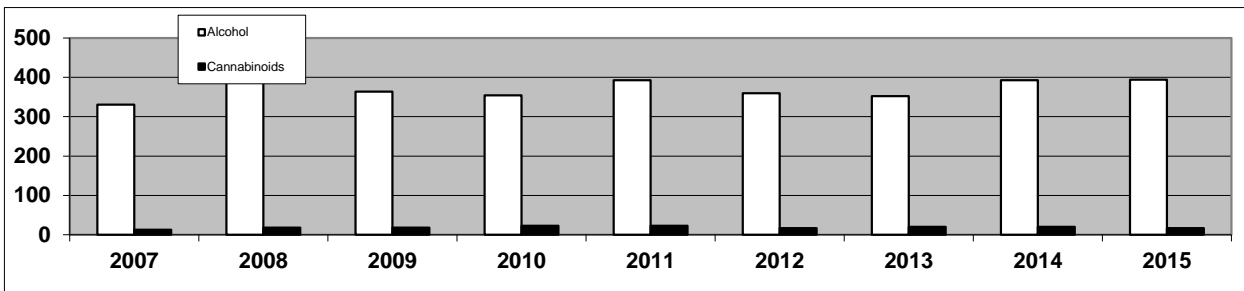
TOXICOLOGY

MEDICAL EXAMINER CASES WHERE TOXICOLOGY WAS PERFORMED

	2007	2008	2009	2010	2011	2012	2013	2014	2015
Cases submitted to Toxicology	1361	1460	1492	1576	1492	1392	1247	1300	1344
Cases where Toxicology was performed	1066	1119	1174	1218	1142	1047	952	1028	1041

MEDICAL EXAMINER CASES TESTING POSITIVE FOR DRUGS

	2007	2008	2009	2010	2011	2012	2013	2014	2015
Alcohol	331	388	364	354	393	360	352	393	394
Cannabinoids	13	18	18	23	23	17	20	20	17
Hydrocodone	105	112	115	146	136	91	73	88	65
Oxycodone	189	308	294	393	322	204	111	126	106
Methadone	116	118	143	168	127	118	83	75	56
Alprazolam (Xanax)	174	250	267	287	205	160	122	152	136
GHB	0	0	0	1	0	0	1	0	0
Fentanyl & Fentanyl Analogs	18	19	27	20	21	23	24	38	59
Heroin	12	5	9	3	1	1	4	7	14
Cocaine	173	154	143	134	112	125	100	98	101

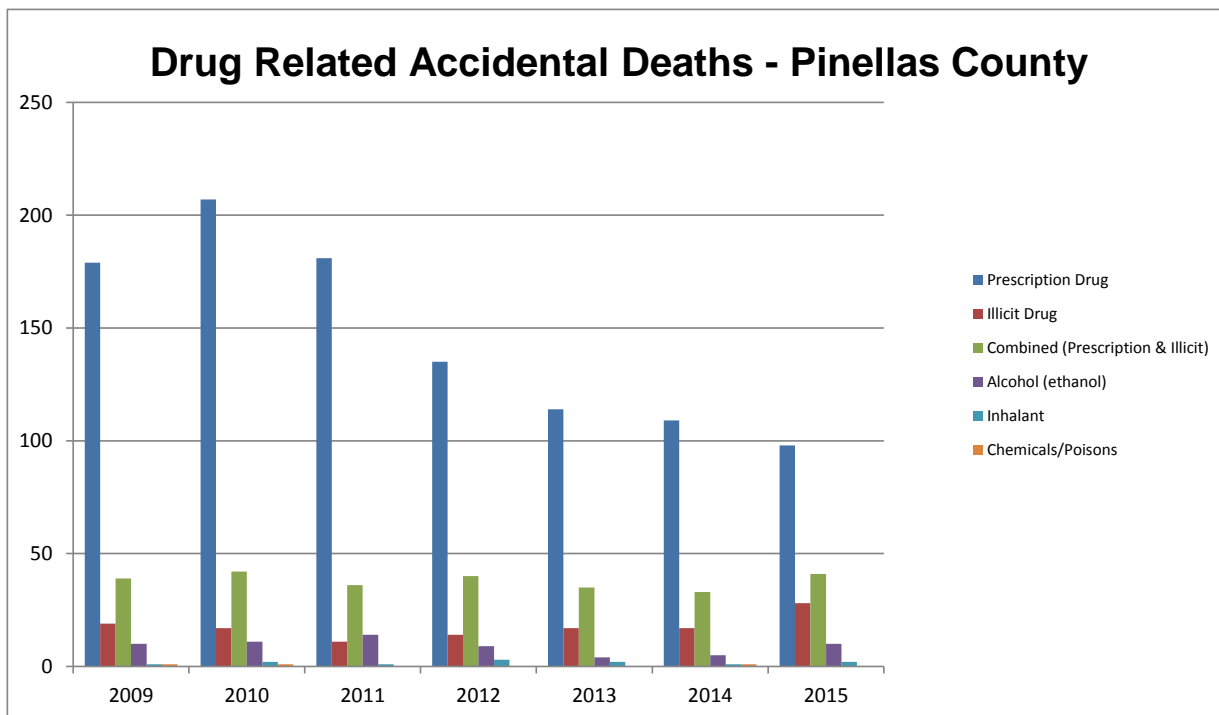


Toxicology Continued....

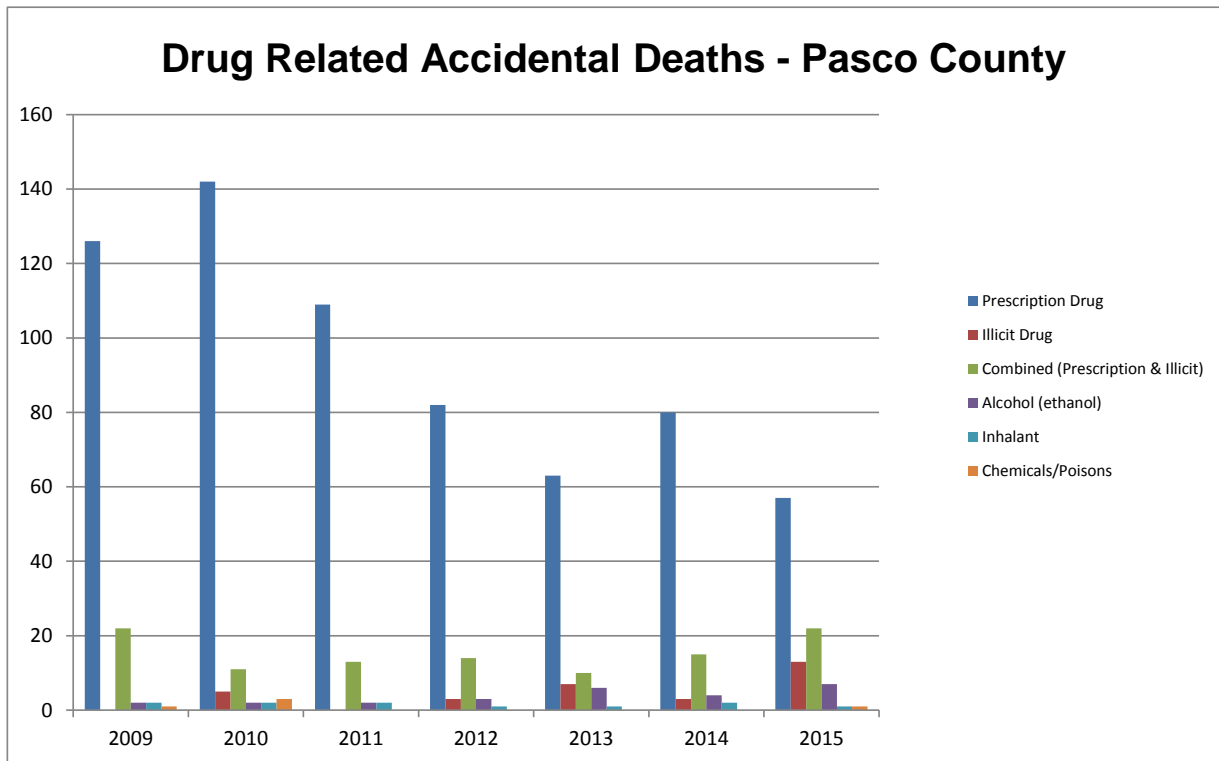
DRUGS or TOXIN RELATED CAUSE OF DEATH (Accidental Manner)

<u>Pinellas</u>	<u>2009</u>	<u>2010</u>	<u>2011</u>	<u>2012</u>	<u>2013</u>	<u>2014</u>	<u>2015</u>
Prescription Drug	179	207	181	135	114	109	98
Illicit Drug	19	17	11	14	17	17	28
Combined (Prescription & Illicit)	39	42	36	40	35	33	41
Alcohol (ethanol)	10	11	14	9	4	5	10
Inhalant	1	2	1	3	2	1	2
Chemicals/Poisons	1	1	0	0	0	1	0
Total Drug Related	249	280	243	201	172	166	179

<u>Pasco</u>	<u>2009</u>	<u>2010</u>	<u>2011</u>	<u>2012</u>	<u>2013</u>	<u>2014</u>	<u>2015</u>
Prescription Drug	126	142	109	82	63	80	57
Illicit Drug	0	5	0	3	7	3	13
Combined (Prescription & Illicit)	22	11	13	14	10	15	22
Alcohol (ethanol)	2	2	2	3	6	4	7
Inhalant	2	2	2	1	1	2	1
Chemicals/Poisons	1	3	0	0	0	0	1
Total Drug Related	153	165	126	103	87	104	101



Toxicology Continued....



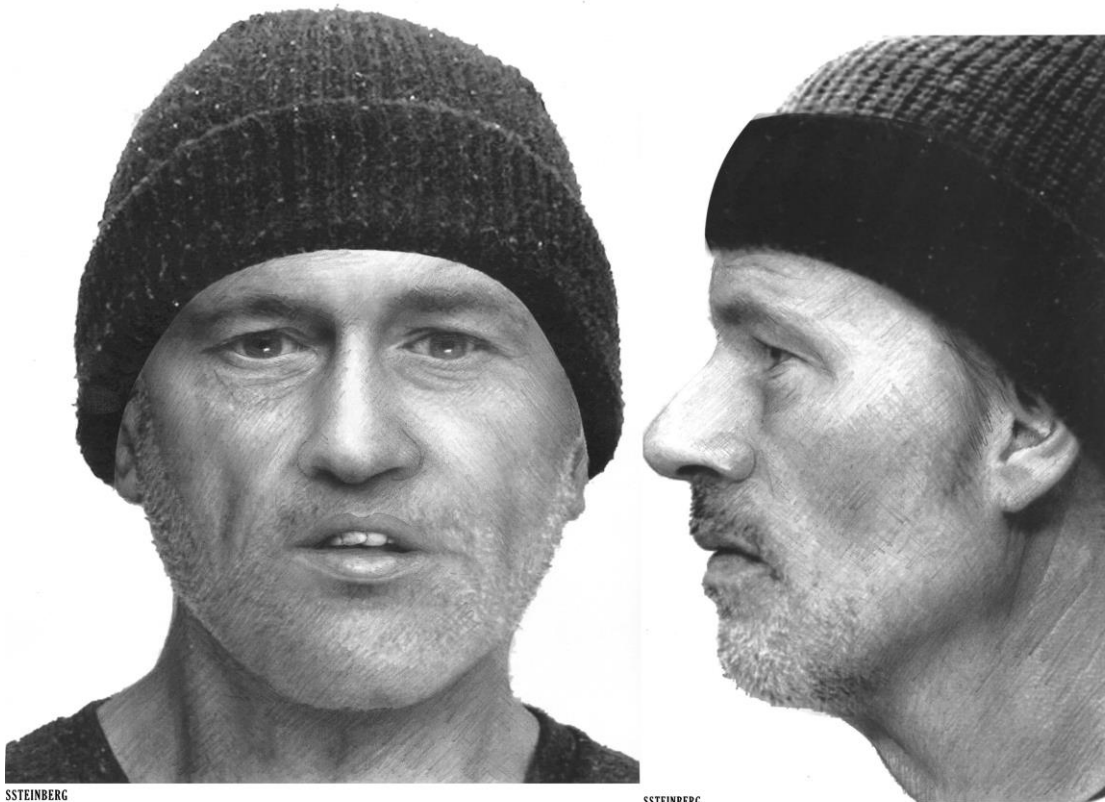
UNIDENTIFIED PERSONS

	2006	2007	2008	2009	2010	2011	2012	2013	2014	2015
Pinellas	0	0	1	0	1	0	0	0	0	0
Pasco	0	0	0	1	1	0	0	0	0	0
Total	0	0	1	1	2	0	0	0	0	0

ID'd 05/10 ID'd 06/16 ID'd 10/11
 ID'd 08/11

**2005
#5050078**

Date Found: 1/12/2005
 Location Found: 44000 Block of U.S. 19 North, Tarpon Springs - Skeletal remains found in wooded area
 Race: White (estimated)
 Gender: Male (estimated)
 Age: 40 - 55 (estimated)
 Height: 5' 8" - 6' 3" (estimated)
 Weight: Unknown
 Hair Color: Unknown
 Eye Color: Unknown
 Law Enforcement Agency: Tarpon Springs Police Department
 Agency Case #: 05-142
 NamUs #: UP 116 <https://identifyus.org/cases/116>



SSTEINBERG
 08-14-2013
 MEO 5050078
 DISTRICT 6 MEO

SSTEINBERG
 08-14-2013
 MEO 5050078
 DISTRICT 6 MEO

<https://identifyus.org/cases/116>

INDIGENT / UNCLAIMED

Medical Examiner Cases Released as Indigent/Unclaimed *

	2007	2008	2009	2010	2011	2012	2013	2014	2015
Pinellas	39	44	45	58	146	125	101	98	134
Pasco	17	24	20	12	45	52	42	52	68
Total:	56	68	65	70	191	177	143	150	202

* Only reflects Medical Examiner cases released as unclaimed/indigent, and does not include all District deaths. May have later been determined to not be indigent or unclaimed.

Organ & Tissue Donation

	2007	2008	2009	2010	2011	2012	2013	2014	2015
Organ Donations	29	28	37	25	41	22	15	39	31
Tissue Donations	55	48	51	28	38	43	54	63	57
Corneal Donations	90	96	143	104	107	135	123	150	131

* Only reflects the number of organ and/or tissue donations for Medical Examiner cases, not all District deaths.

Exhumations

	2007	2008	2009	2010	2011	2012	2013	2014	2015
Pinellas	0	0	0	4	0	0	0	0	0
Pasco	0	0	0	2	0	0	0	0	0
Total:	0	0	0	6	0	0	0	0	0