

Map 1 - Location

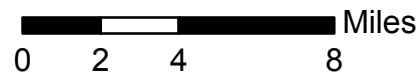
CASE #: CW18-24

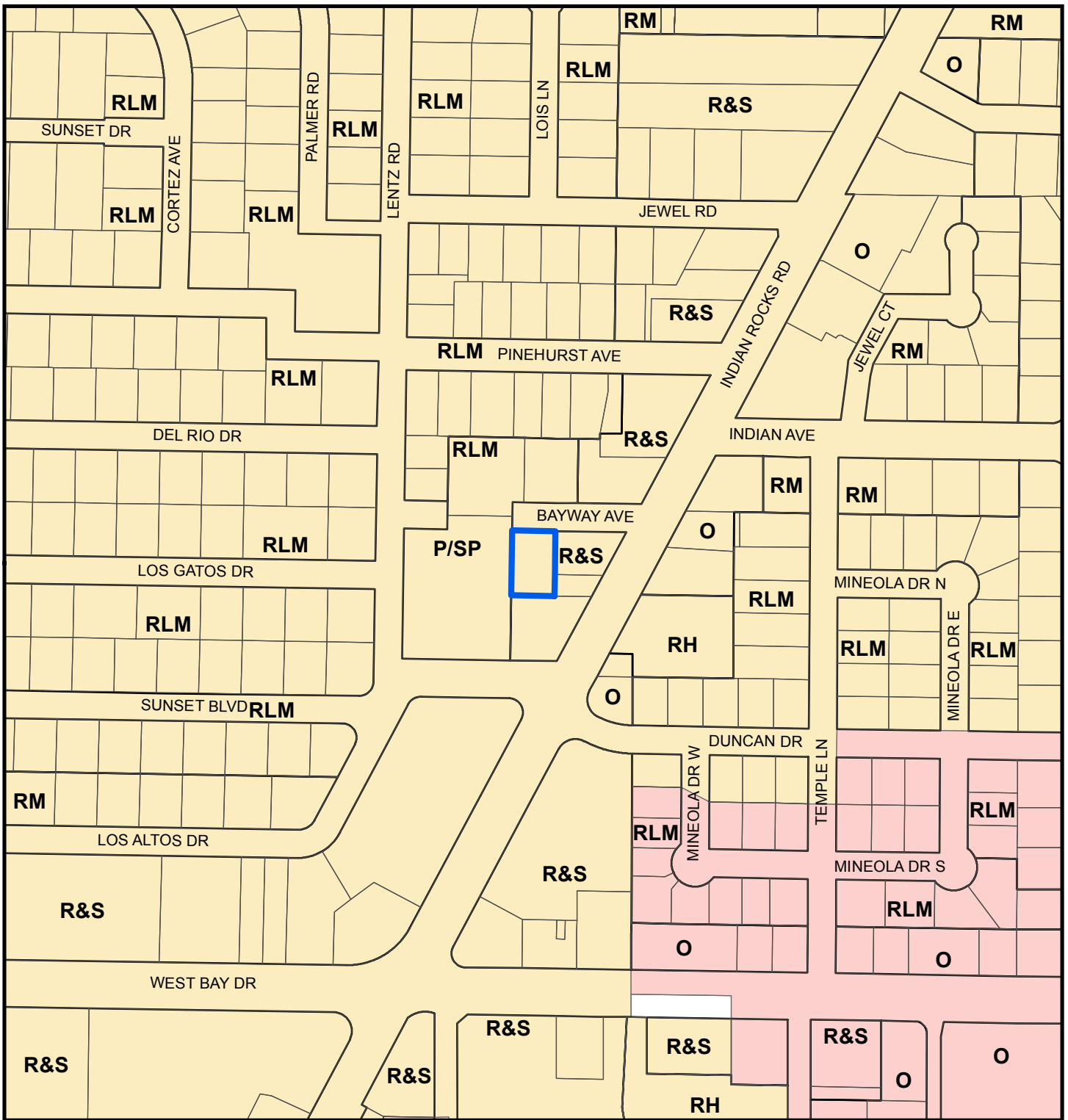
FROM: Residential Low Medium

AREA: 0.3 Acres

JURISDICTION: Belleair Bluffs

TO: Retail & Services





Map 2 - Current Countywide Plan Map & Jurisdictional Map

CASE #: CW18-24

FROM: Residential Low Medium

AREA: 0.3 Acres


JURISDICTION: Belleair Bluffs

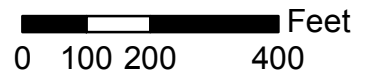
TO: Retail & Services

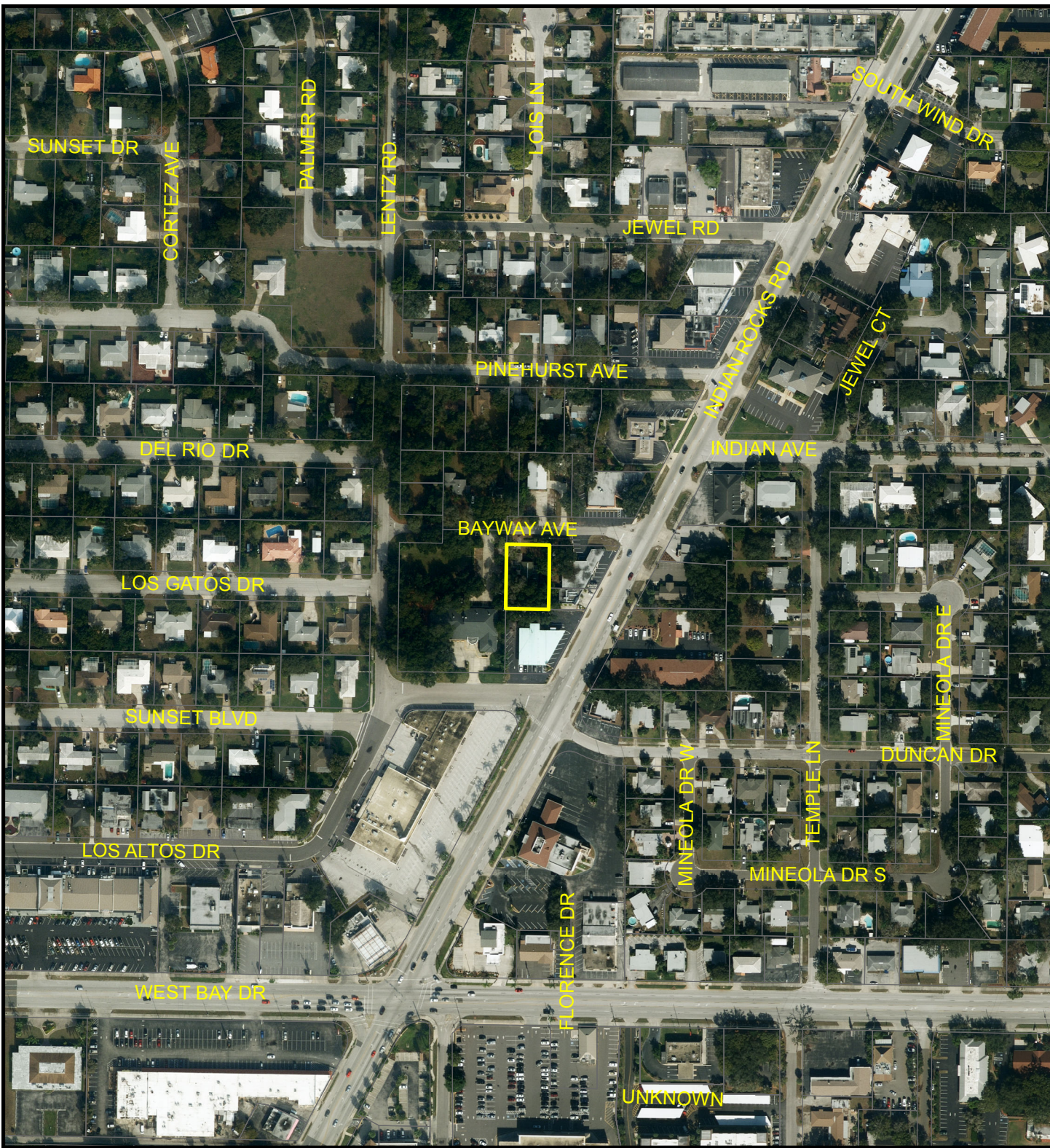
LEGEND:

 Belleair Bluffs

 Largo

 Unincorporated





Map 3 - Aerial

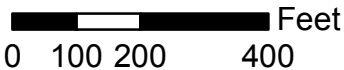
CASE #: CW18-24

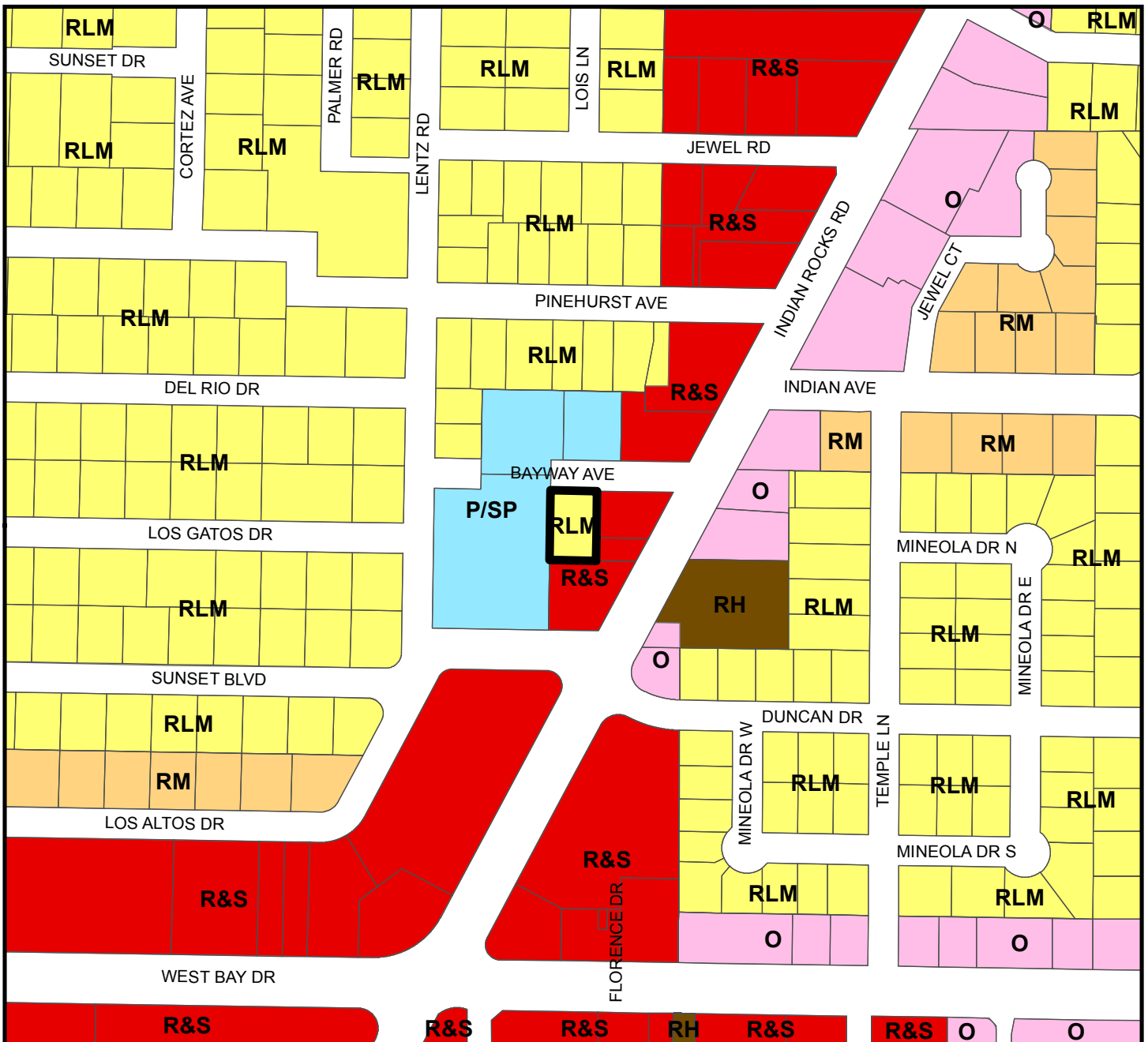
FROM: Residential Low Medium

AREA: 0.3 Acres

JURISDICTION: Belleair Bluffs

TO: Retail & Services



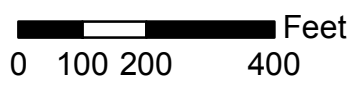


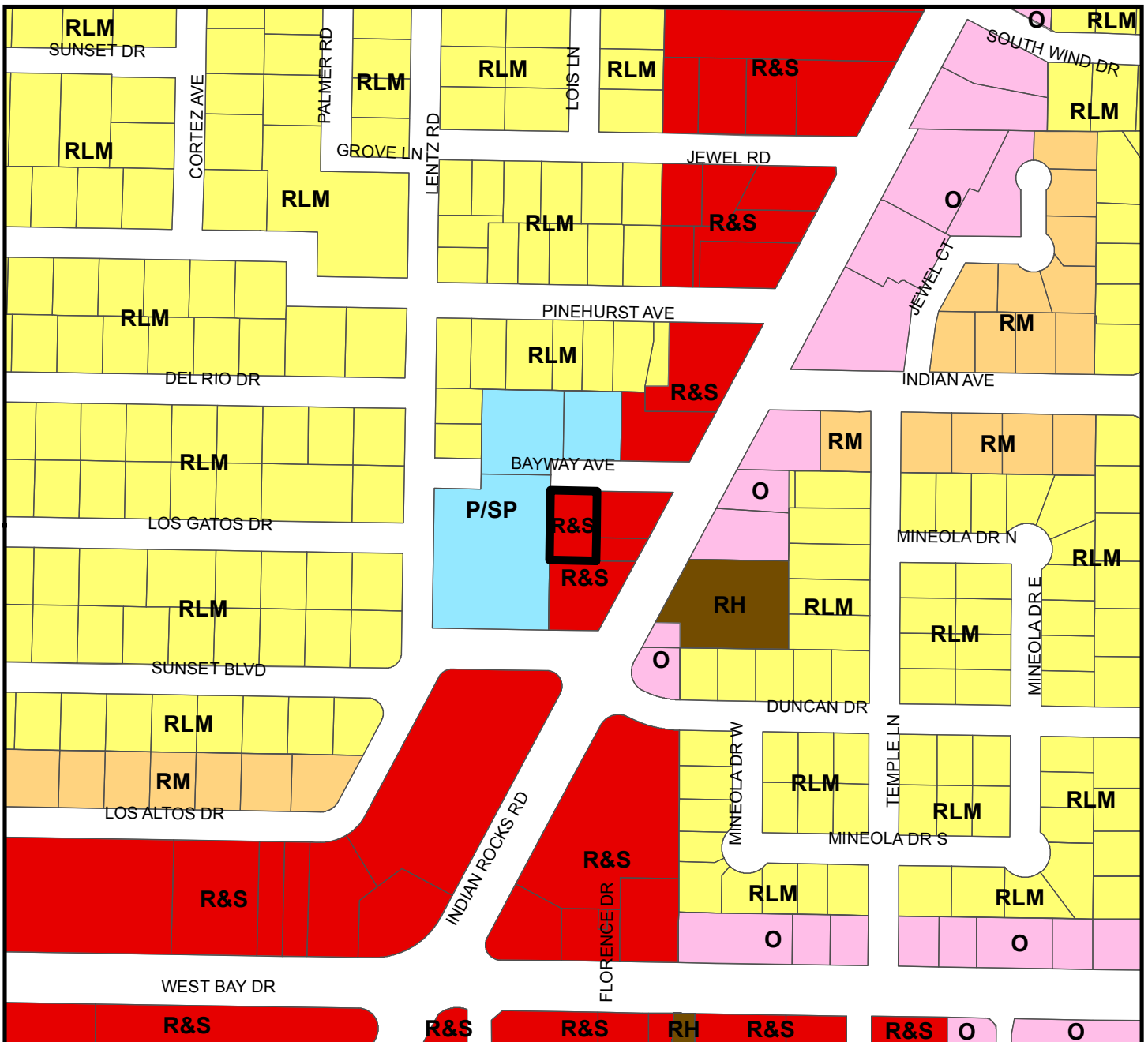
Countywide Plan Map Categories

- Residential Low Medium
- Office
- Residential Medium
- Retail & Services
- Residential High
- Public/Semi-Public

Map 4 - Current Countywide Plan Map

CASE #: CW18-24 **FROM:** Residential Low Medium **AREA:** 0.3 Acres
JURISDICTION: Belleair Bluffs **TO:** Retail & Services





Countywide Plan Map Categories



Map 5 - Proposed Countywide Plan Map

CASE #: CW18-24

FROM: Residential Low Medium

AREA: 0.3 Acres

JURISDICTION: Belleair Bluffs

TO: Retail & Services

