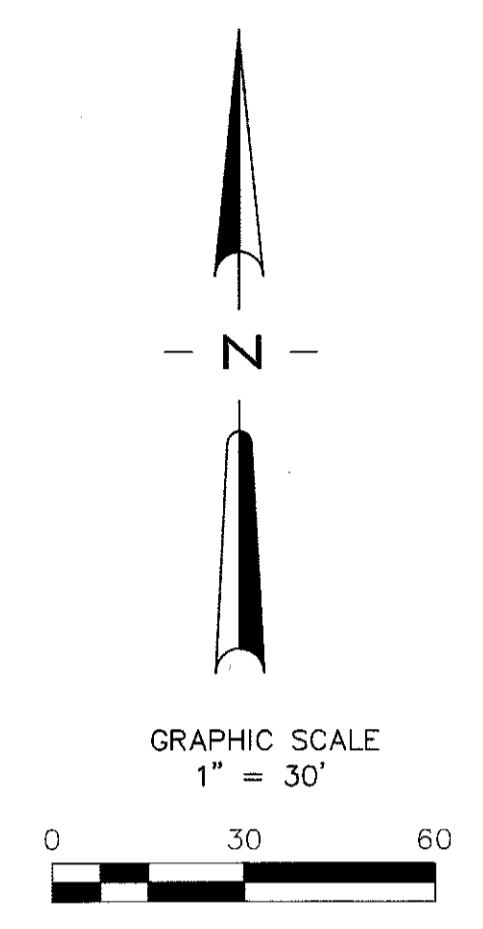
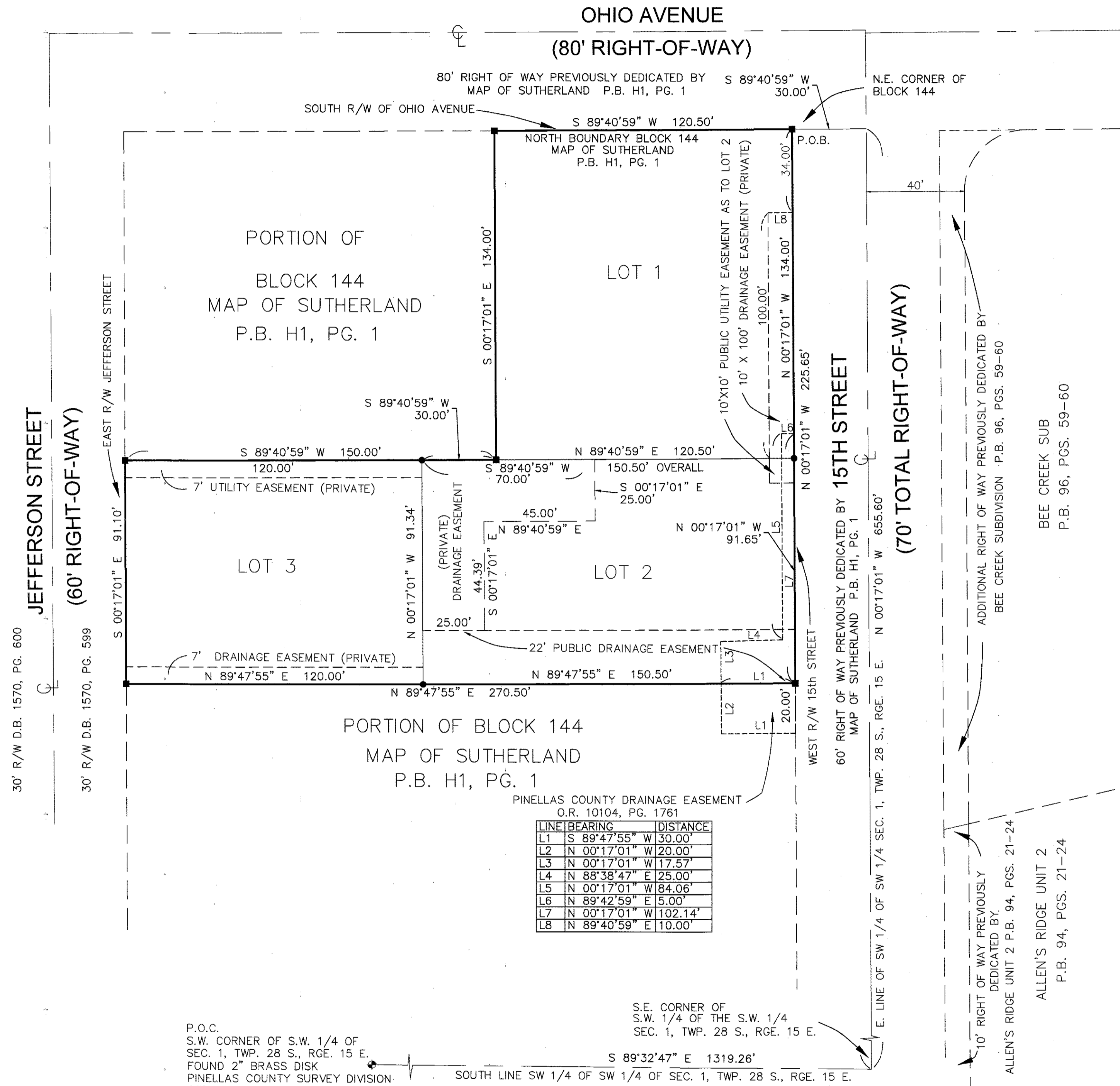


COHEN COURTS

BEING A REPLAT OF A PORTION OF BLOCK 144, MAP OF OF SUTHERLAND, AS RECORDED IN PLAT BOOK 1, PAGE 1, OF THE PUBLIC RECORDS OF HILLSBOROUGH COUNTY, FLORIDA OF WHICH PINELLAS COUNTY, WAS FORMERLY A PART, ALL LYING IN THE SOUTHWEST 1/4 OF SECTION 1, TOWNSHIP 28 SOUTH, RANGE 15 EAST, PINELLAS COUNTY, FLORIDA.



NOTES

1. THE BASIS OF BEARING ARE REFERENCED TO THE RECORDED DEEDS AND REFERENCED TO THE WEST RIGHT-OF-WAY OF 15TH STREET, BEARING N 00°17'01" W.
2. "NOTICE: THIS PLAT, AS RECORDED IN ITS GRAPHIC FORM, IS THE OFFICIAL DEPICTION OF THE SUBDIVIDED LANDS DESCRIBED HEREIN AND WILL IN NO CIRCUMSTANCES BE SUPPLANTED IN AUTHORITY BY ANY OTHER GRAPHIC OR DIGITAL FORM OF THE PLAT. THERE MAY BE ADDITIONAL RESTRICTIONS THAT ARE NOT RECORDED ON THIS PLAT THAT MAY BE FOUND IN THE PUBLIC RECORDS OF THIS COUNTY."
3. ALL PLATTED UTILITY EASEMENTS SHALL PROVIDE THAT SUCH EASEMENTS SHALL ALSO BE EASEMENTS FOR THE CONSTRUCTION, INSTALLATION, MAINTENANCE, AND OPERATION OF CABLE TELEVISION SERVICES; PROVIDED, HOWEVER, NO SUCH CONSTRUCTION, INSTALLATION, MAINTENANCE, AND OPERATION OF CABLE TELEVISION SERVICES SHALL INTERFERE WITH THE FACILITIES AND SERVICES OF AN ELECTRIC, TELEPHONE, GAS, OR OTHER PUBLIC UTILITY. IN THE EVENT A CABLE TELEVISION COMPANY DAMAGES THE FACILITIES OF A PUBLIC UTILITY, IT SHALL BE SOLELY RESPONSIBLE FOR THE DAMAGES. THIS SECTION SHALL NOT APPLY TO THOSE PRIVATE EASEMENTS GRANTED TO OR OBTAINED BY A PARTICULAR ELECTRIC, TELEPHONE, GAS, OR OTHER PUBLIC UTILITY. SUCH CONSTRUCTION, INSTALLATION, MAINTENANCE, AND OPERATION SHALL COMPLY WITH THE NATIONAL ELECTRICAL SAFETY CODE AS ADOPTED BY THE FLORIDA PUBLIC SERVICE COMMISSION.

- LEGEND**
- ⊕ = CENTERLINE.
 - = LOT CORNER / 1/2" IRON & CAP L.B. 8221
 - = P.R.M. = PERMANENT REFERENCE MONUMENT
4"x4" CONCRETE MONUMENT L.B. 8221
 - L.B. = LICENSED BUSINESS
 - PLS = PROFESSIONAL LAND SURVEYOR
 - P.O.B. = POINT OF BEGINNING
 - P.O.C. = POINT OF COMMENCEMENT
 - R/W = RIGHT-OF-WAY
 - P.B. = PLAT BOOK
 - PG.(S) = PAGE OR PAGES
 - O.R. = OFFICIAL RECORD BOOK
 - D.B. = DEED BOOK
 - SEC. = SECTION
 - TWP. = TOWNSHIP
 - RGE. = RANGE
 - H1 = HILLSBOROUGH COUNTY PLAT BOOK 1

COMPLETE SURVEYING SOLUTIONS LLC
L.B. 8221
406 SO. ARDTURAS AVE.
SUITE ONE
CLEARWATER, FL 33765
(727) 734-4266