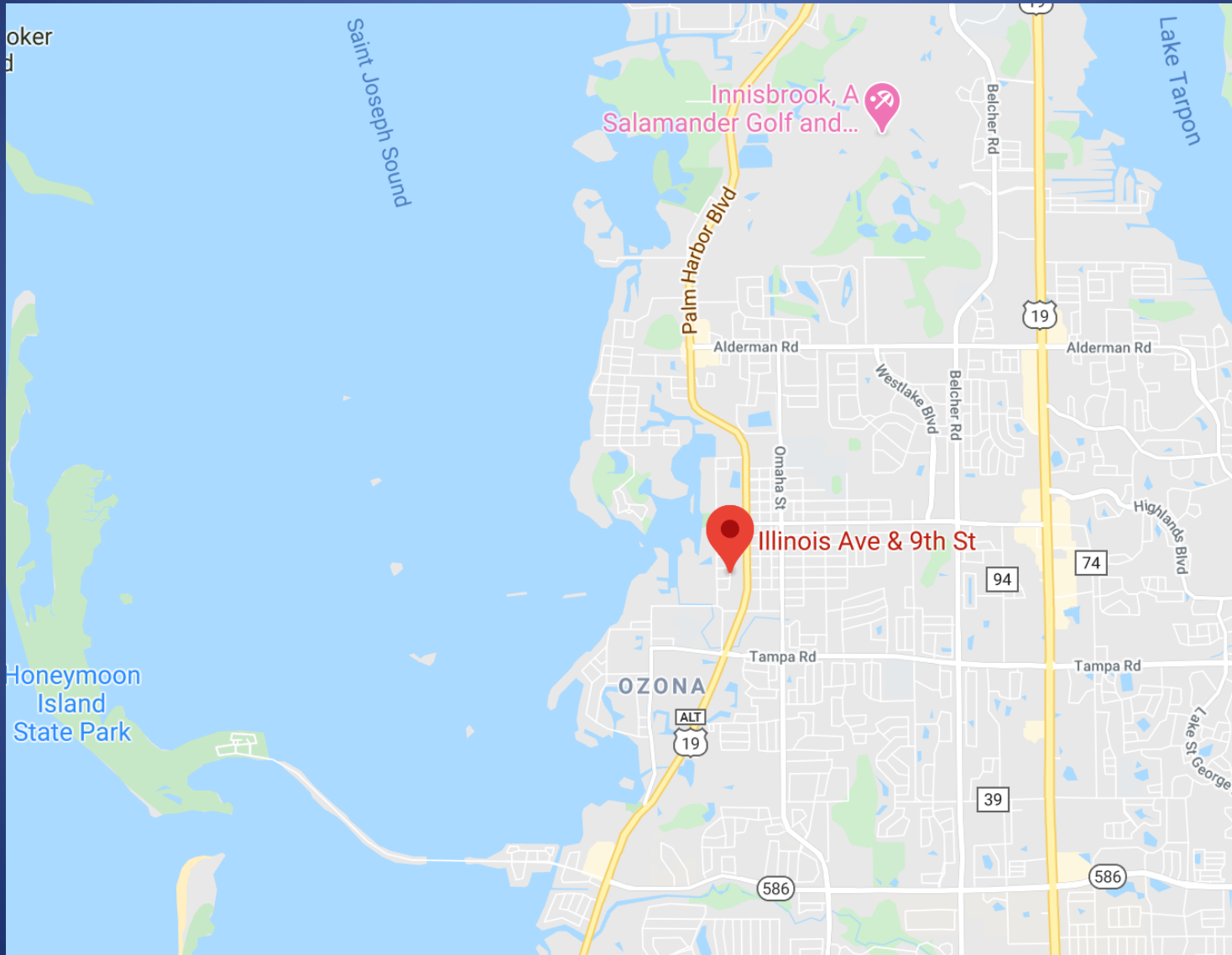
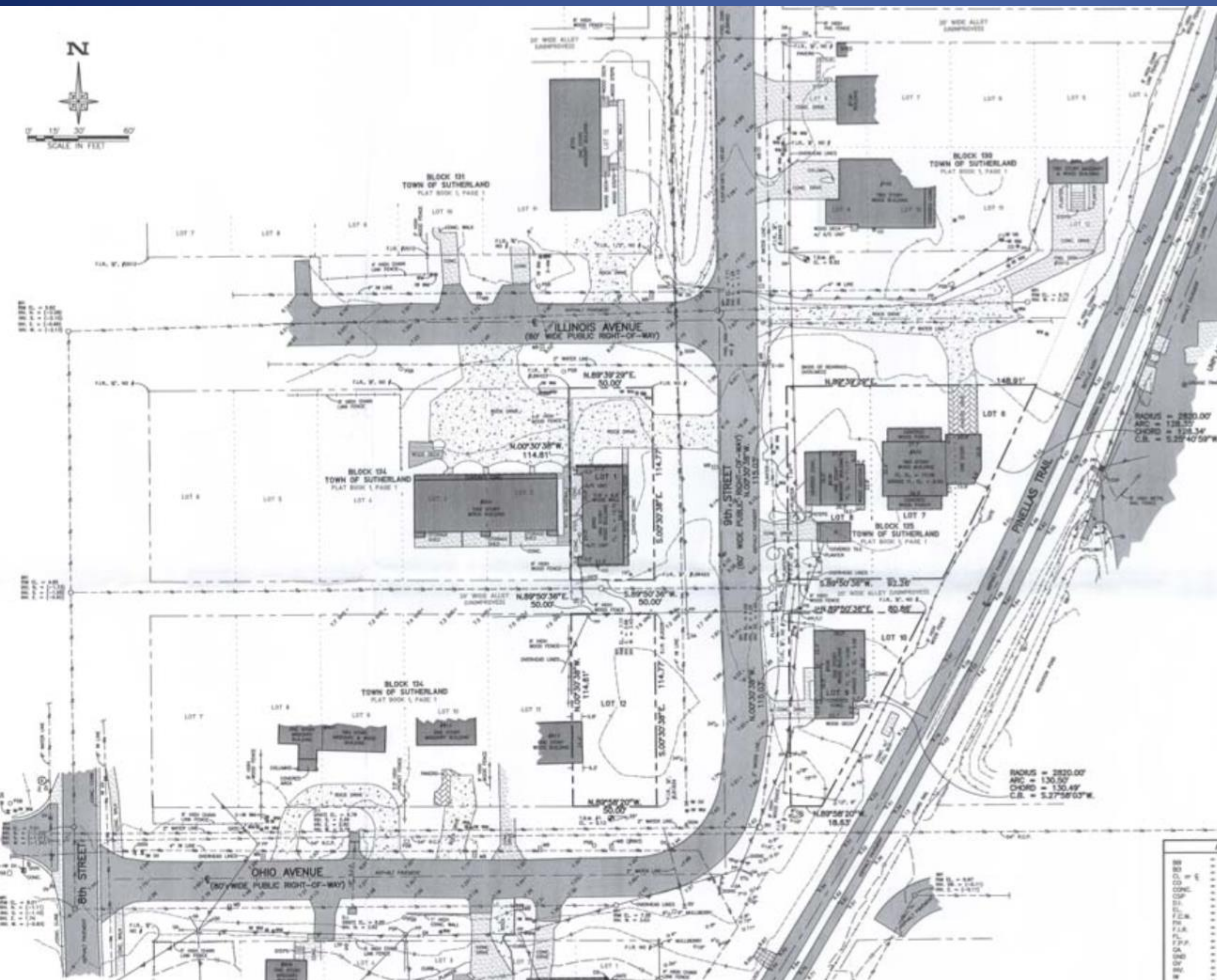


LOCATION







Approx. 2 years
ago.

MUCH reduced
plan today



920 Illinois Ave.,
Palm Harbor





Orientation of Vacate/Easement Issues and Existing Conditions

(Approximate and not to scale)

Current Trail Path



2 other petitioner's

Trail Access Point

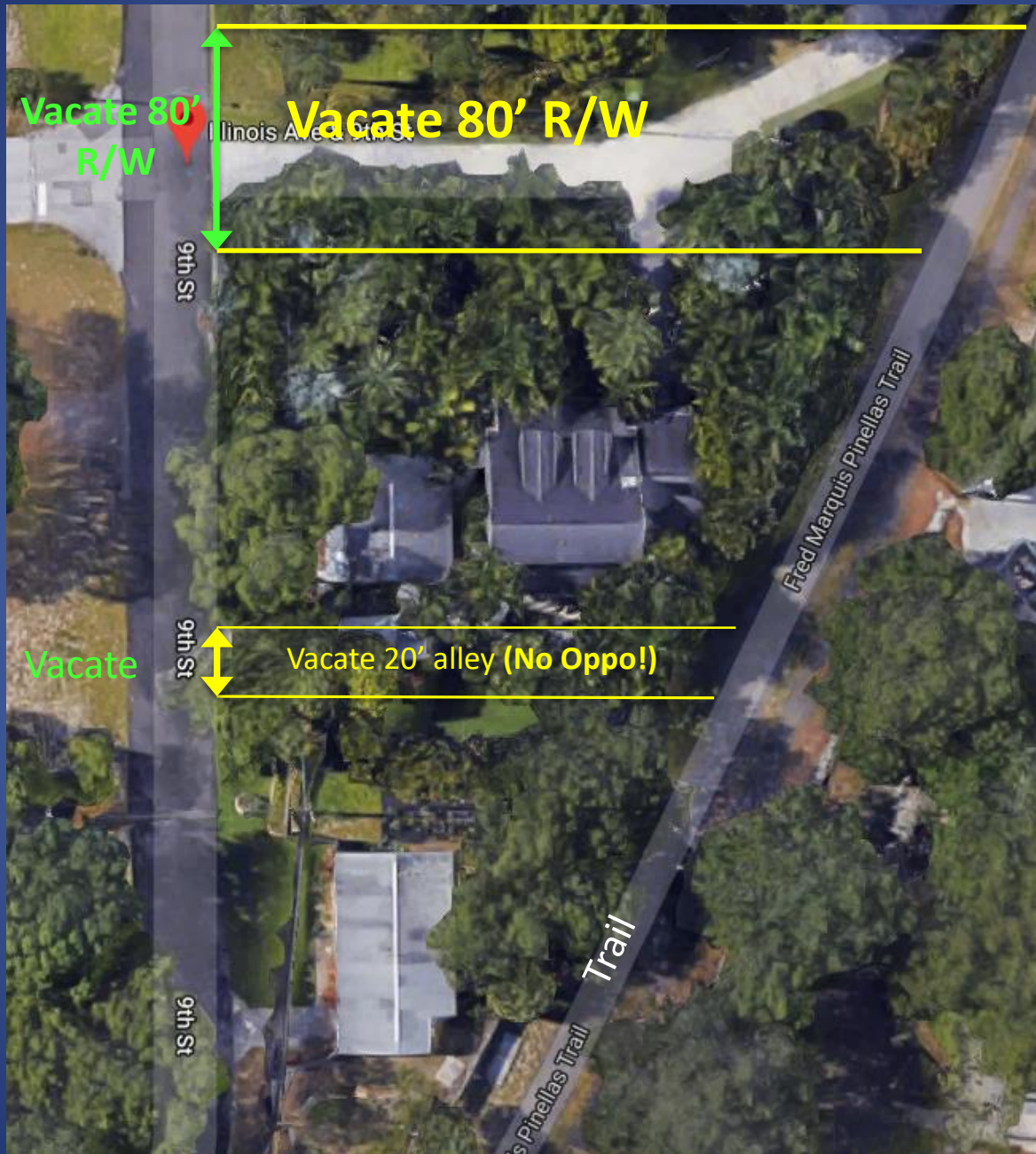


Muller

Illinois

With experts, we submitted a successful plan to address all concerns:

Vacating Steps:

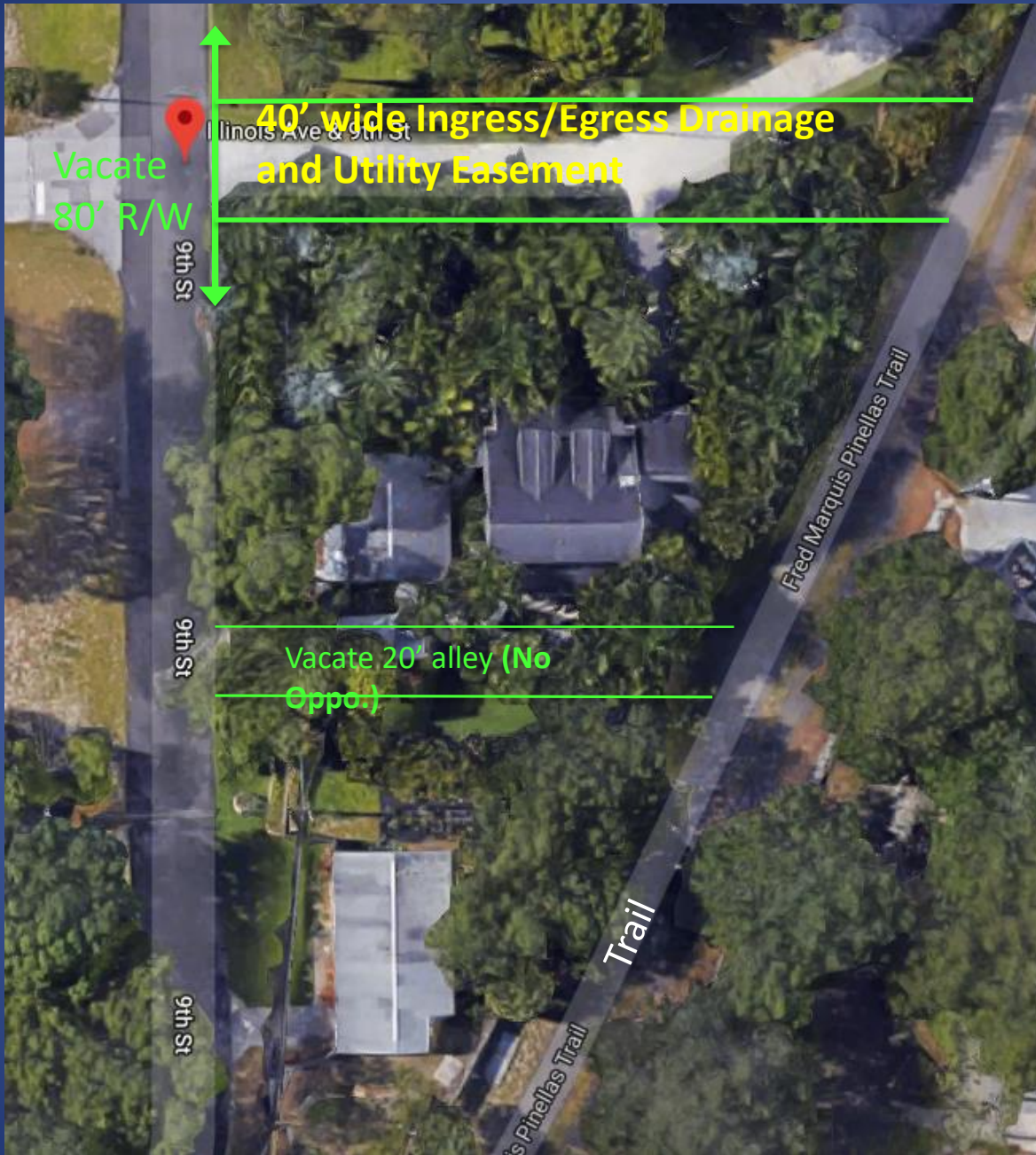


1) Vacate Two Areas

(approximate and not to scale)

a) Vacate 80' wide

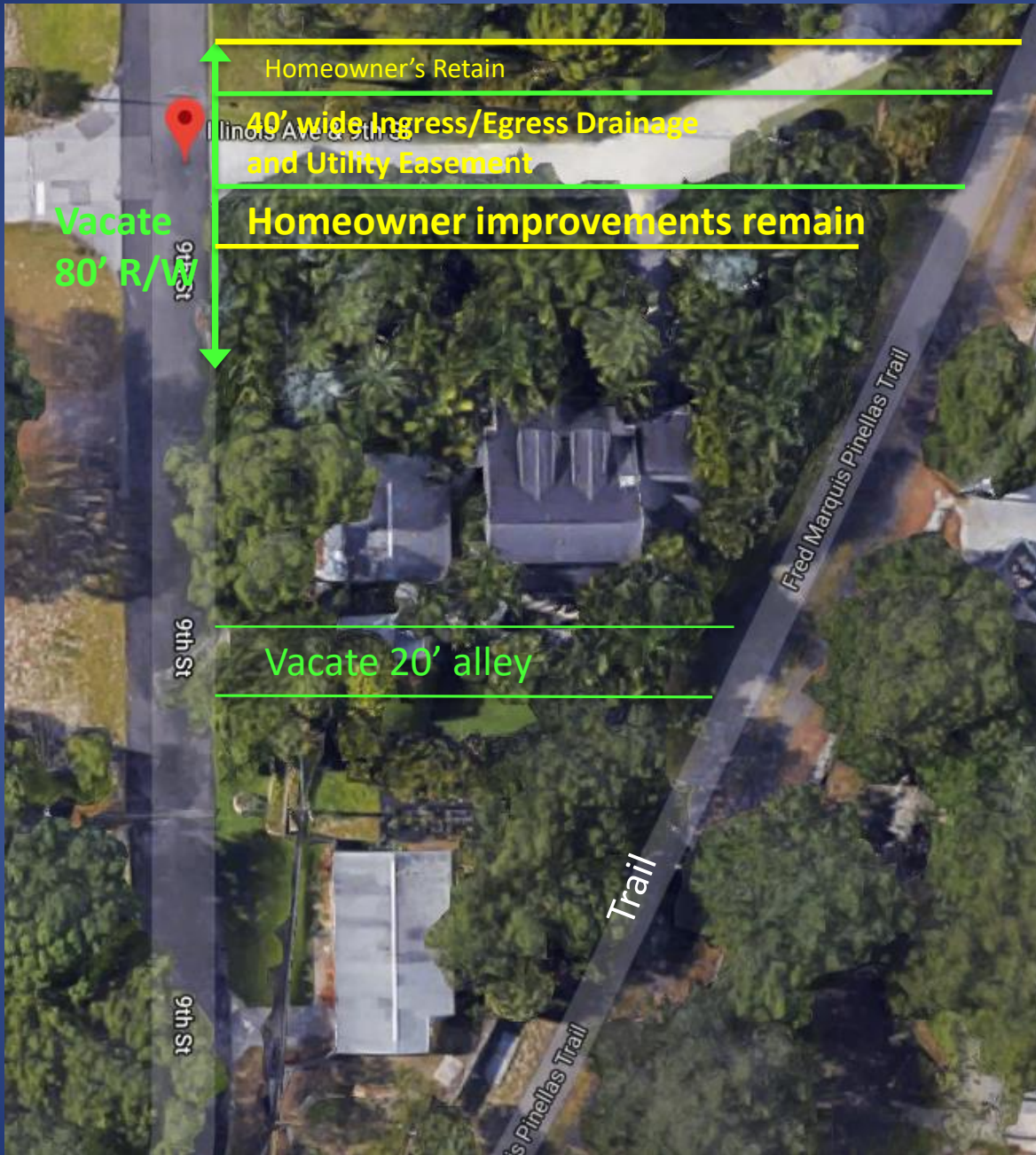
b) Vacate 20' wide (NO OPPO!)



2) Provide Easement

(approximate and not to scale)

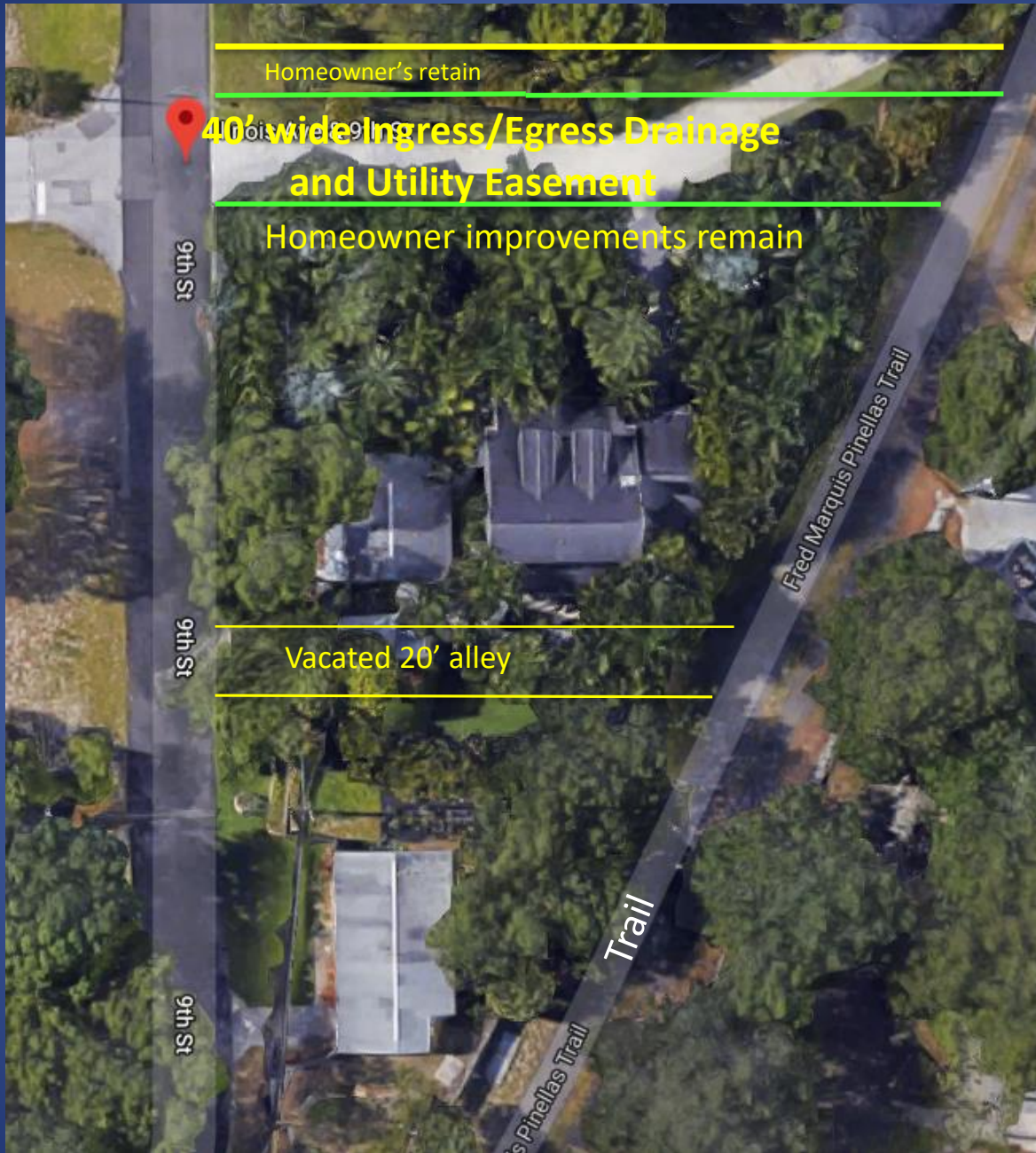
- a) Maintain 40' wide easement for public trail access, drainage and utilities



3) Homeowner's Improvements Remain

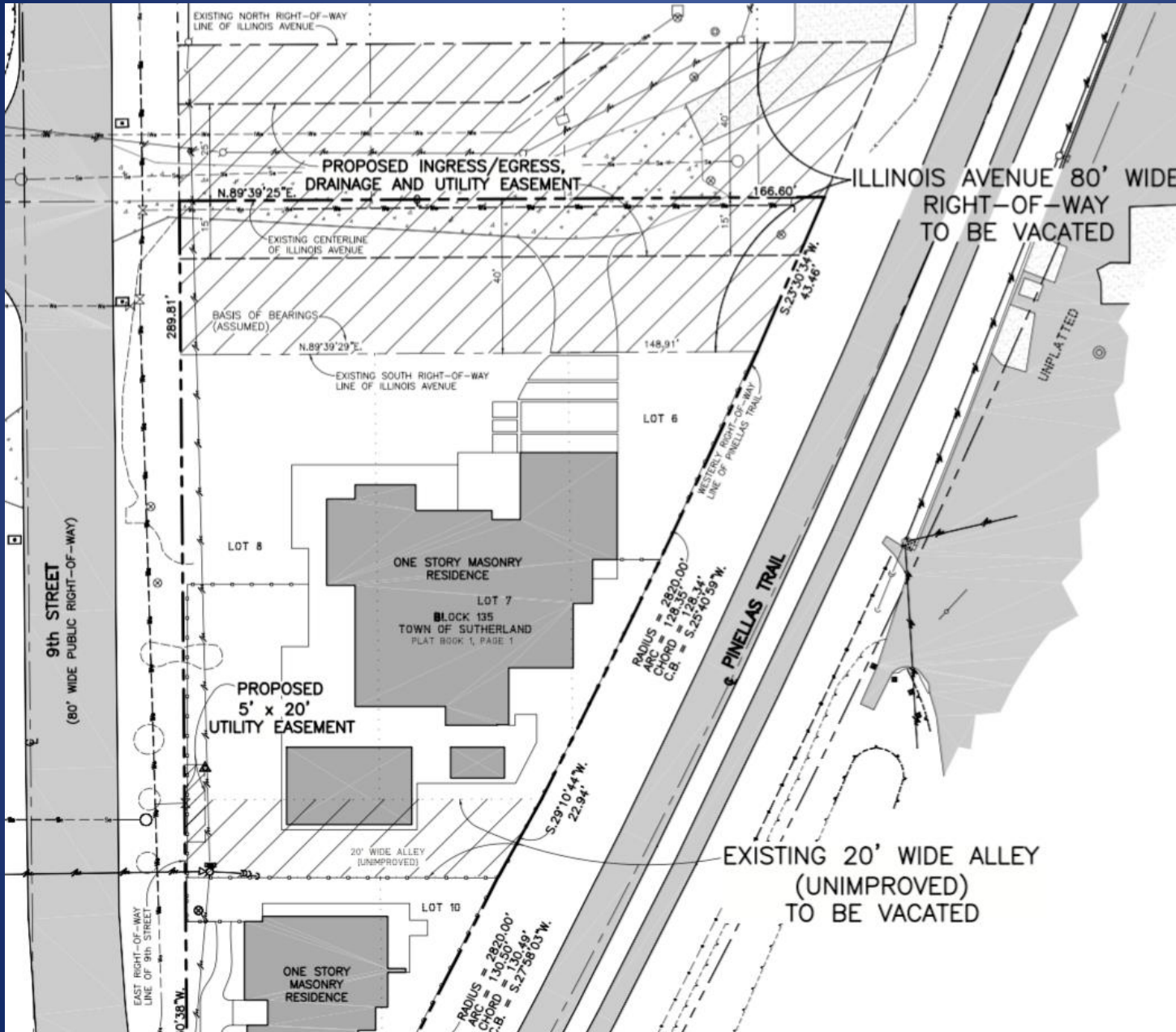
(approximate and not to scale)

Allows homeowner improvements to remain



Action Summary

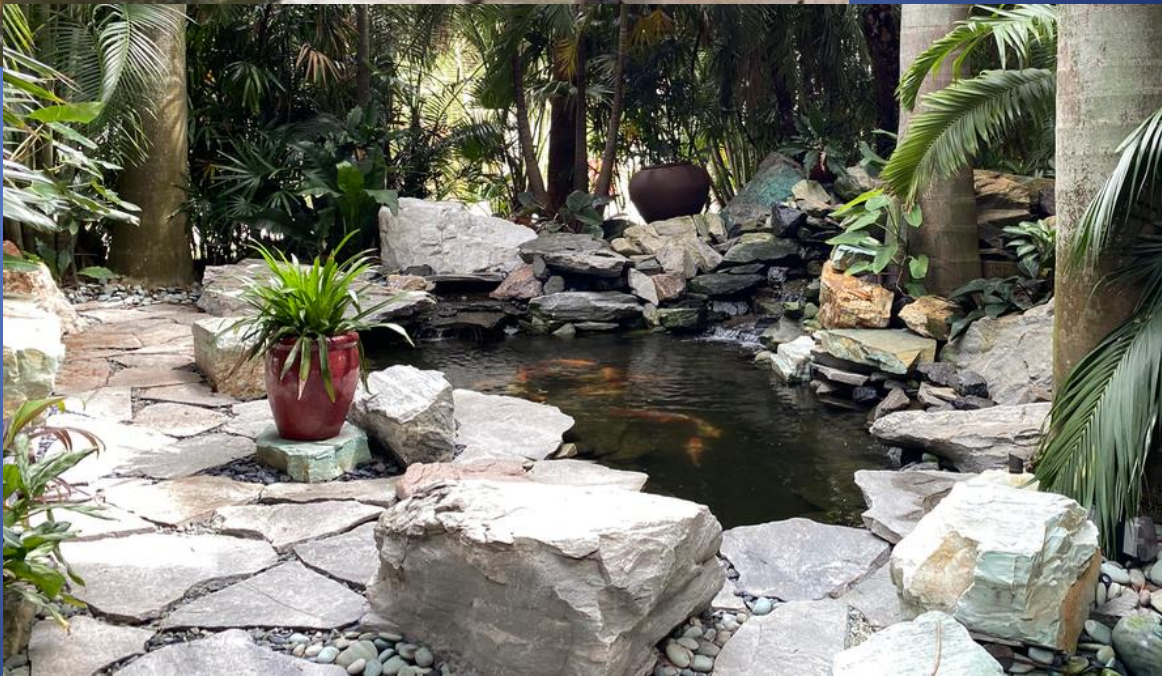
(approximate and not to scale)



Technical Drawing

Improvements













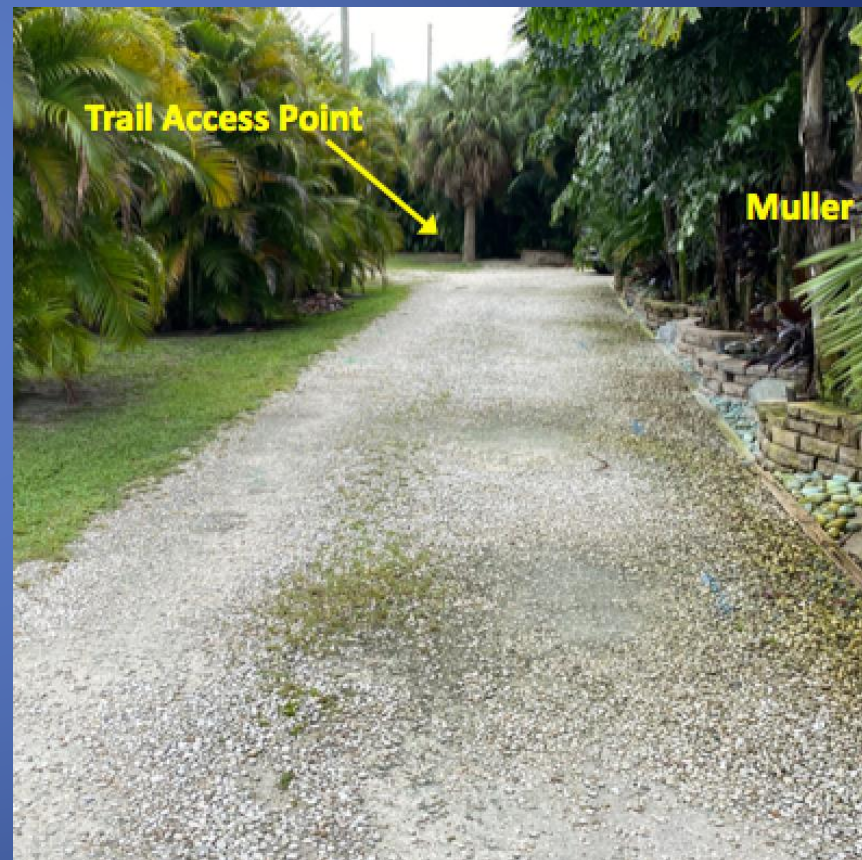
**Muller's did a mail out and
held a community
meeting...been talking with
neighbors**

Staff Concern: Trail Access

Again, no closing of any trail access

2nd nearby access not involved.

(Muller's have been maintaining it for many years)



Staff Concern: Stormwater

- Staff is 'on an undetermined hold' or in stasis in regard to stormwater in this area. Don't know when, what, where, how or if ever. Unknown.
- Submitted intensive drainage plan by Tom Radcliffe, Civil Engineer, Lloveras, Baur, Stevens firm, designing same projects 45 years, thousands systems, never had a problem, decades of drainage engineering, has studied the area intensely. No problems. Devised successful vacating plan today.

The logo for Lloveras, Baur and Stevens features the company name in a large, white, serif font. Below the name is a thin white horizontal line. The background of the logo is a dark, textured image of a road or highway with trees and a sky.

Lloveras, Baur and Stevens

Engineering Excellence Since 1956

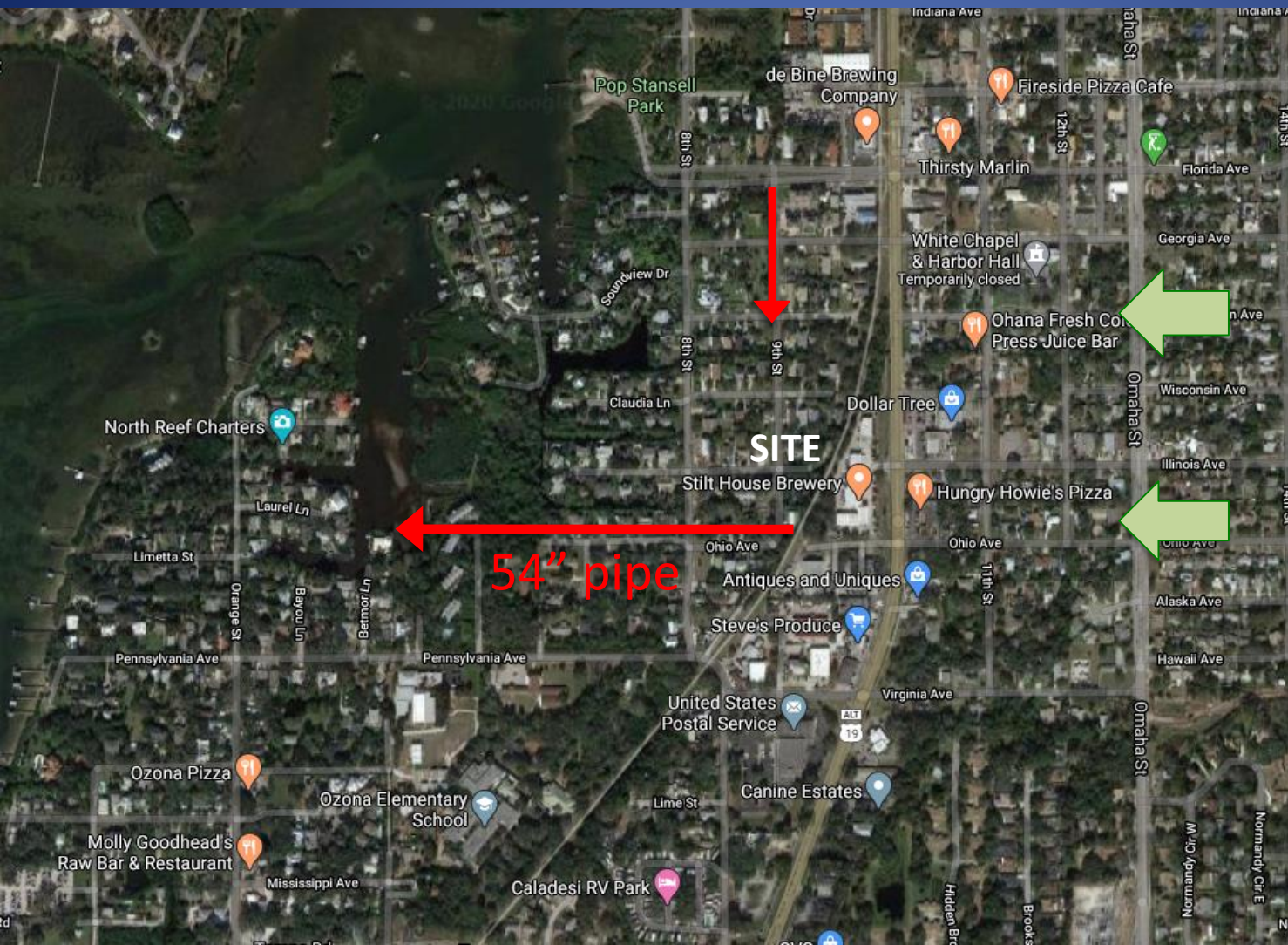
Staff Concern: Stormwater

- Illinois is a higher point
- Broad scale, Illinois is far from the best and much more difficult route to drain water. Already have alternative natural and man made routes are much better & be improved.
- Test of time, 16 years, Trop. storms, etc., no problems.
- The County takes back drainage, utility and access easement. 20' either side.

The logo for Lloveras, Baur and Stevens is set against a background image of a road and trees. The company name is written in a large, bold, white serif font. A thin white horizontal line is positioned below the company name.

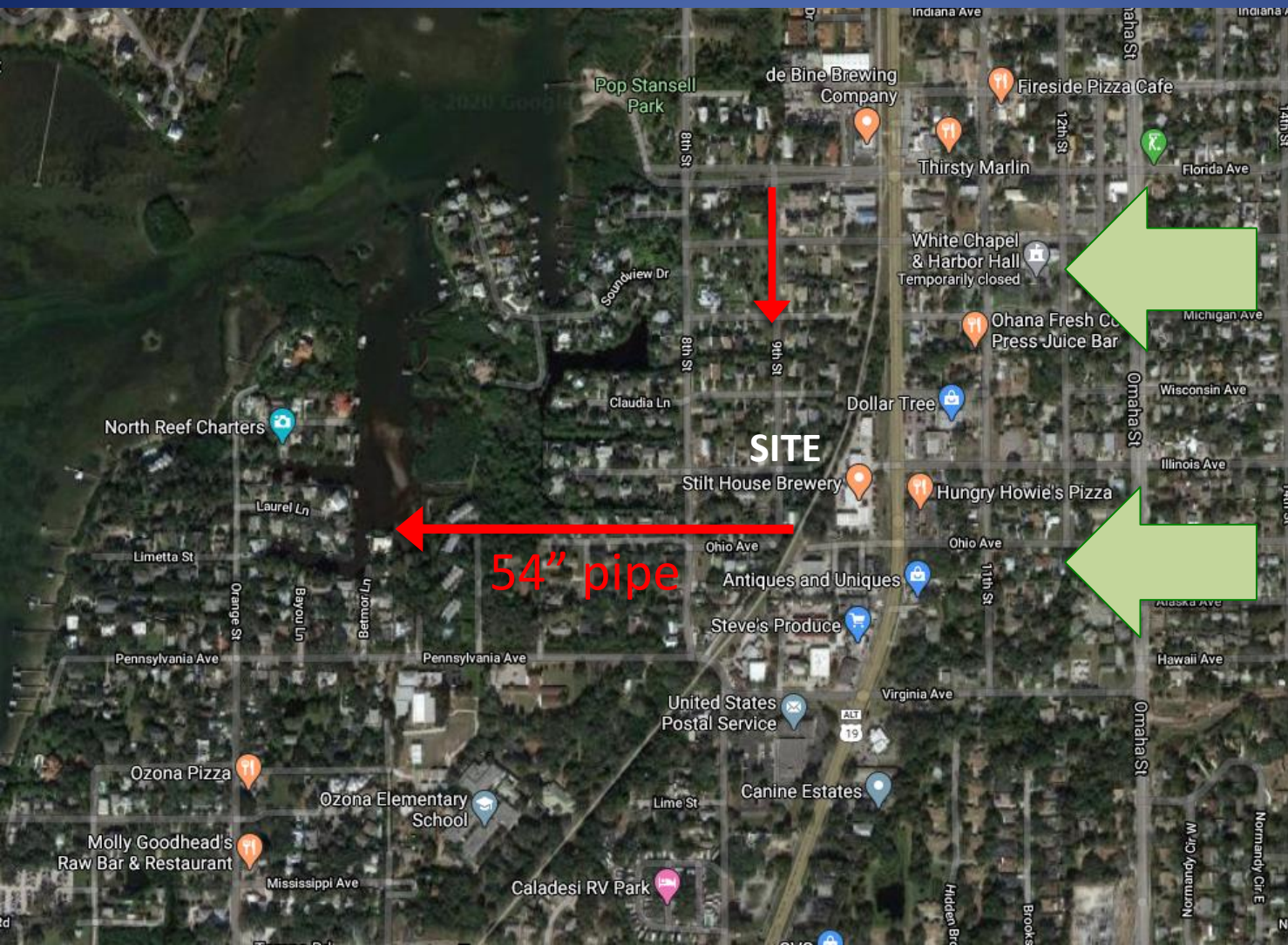
Lloveras, Baur and Stevens

Engineering Excellence Since 1956



Existing and
Natural
Drainage

Illinois Best Route?



Scale. Do 2, 20' strips make a difference?



**Existing
Conditions**

**Structure
blocks**

(Approximate and not to scale)



2) Provide Easement

(approximate and not to scale)

- a) Maintain 40' wide easement for public trail access, drainage and utilities

SUMMARY:

- Trial access remains
- Proposed vacating and easements address concerns & return drainage area
- Expert look, review and study area closely
- Scale of staff's concerns minute in regard to 2 small tiny little swatches
 - Improvements to remain, test of time
 - Worked with neighbors
- Illinois poor route & location for stormwater