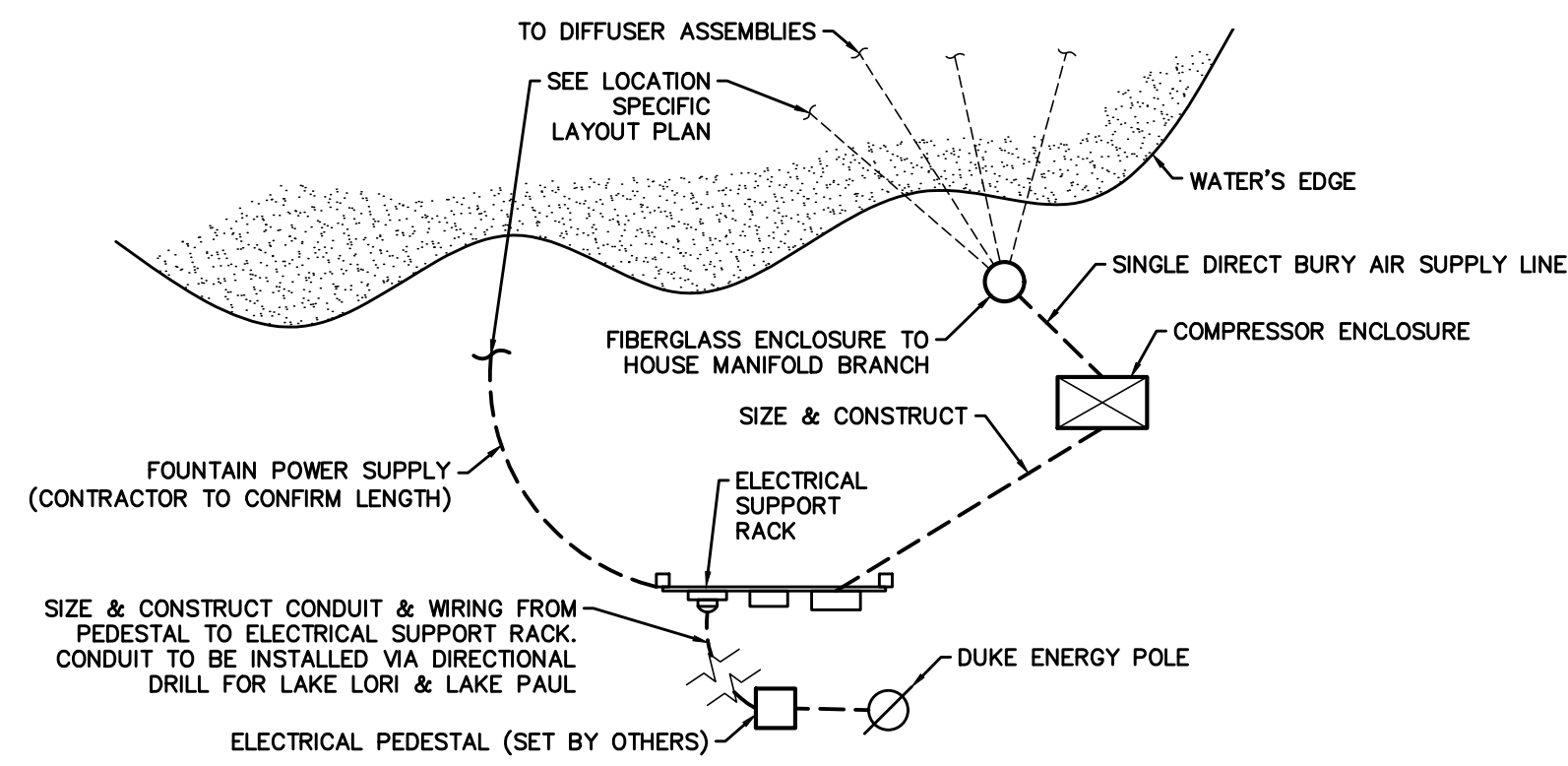
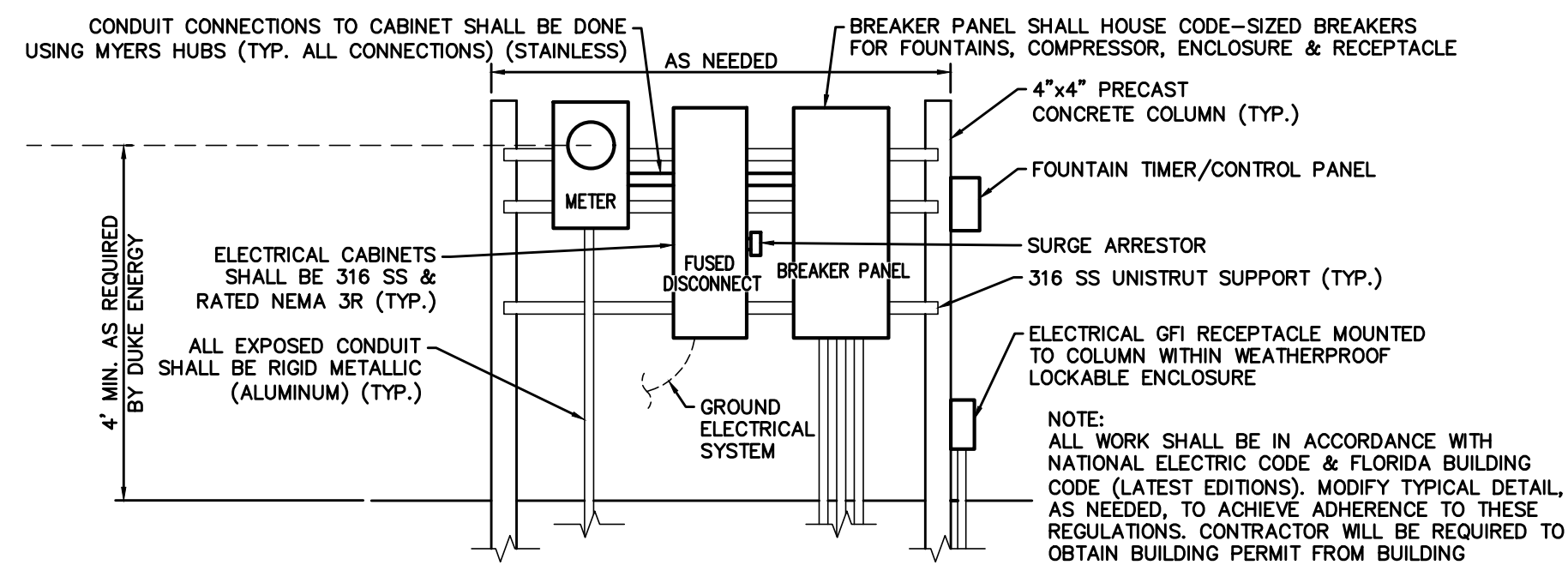


**LOCATION MAP**  
SCALE: 1"=400'

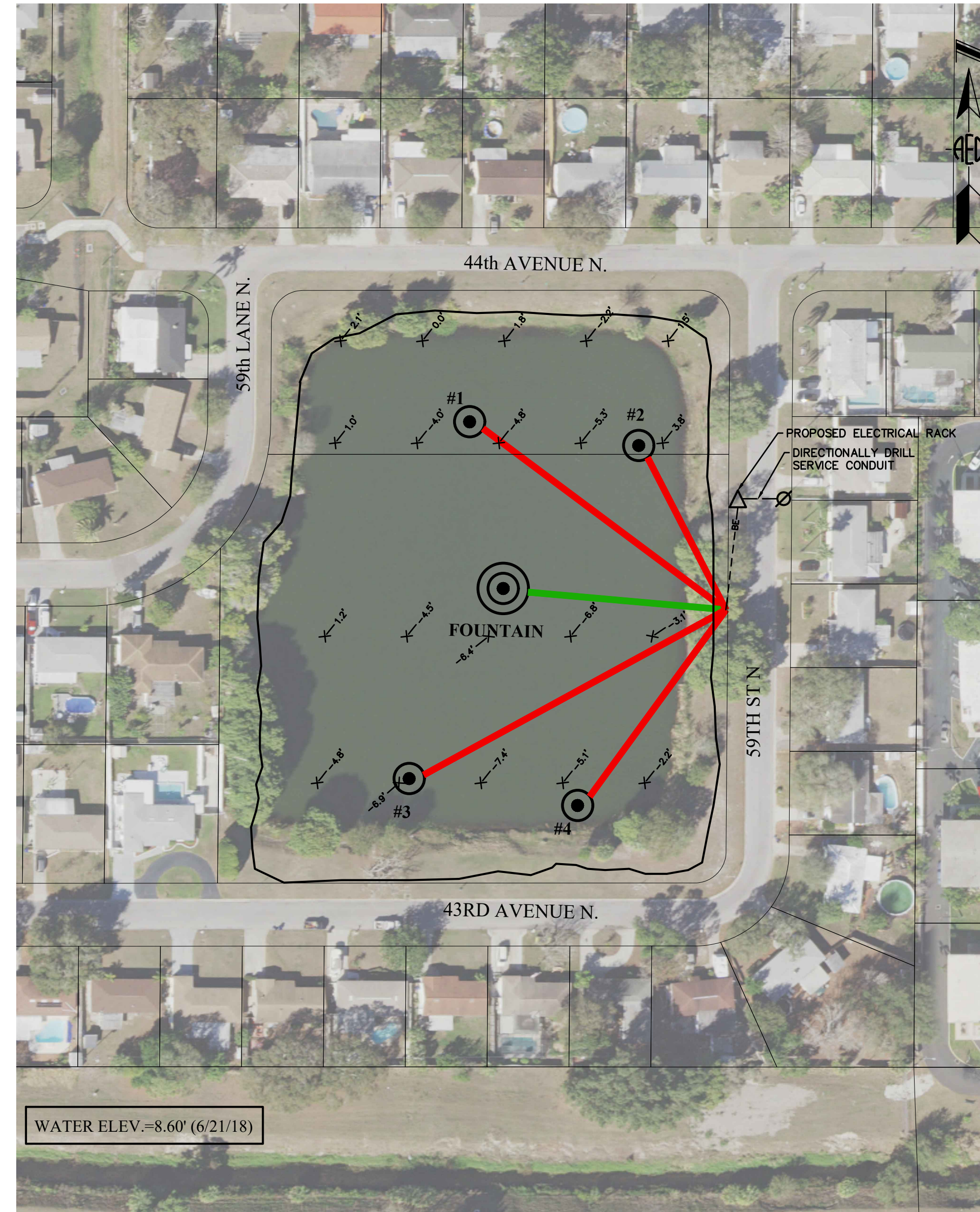
- LEGEND:**
- FLOATING FOUNTAIN (WITH MOORING ASSEMBLY)
  - DIFFUSER ASSEMBLY
  - WEIGHTED AIRLINE
  - POWER CABLE
  - BURIED ELECTRICAL
  - ELECTRICAL SUPPORT RACK
  - UTILITY PEDESTAL (SET BY DUKE ENERGY)
  - EXISTING LAKE BOTTOM ELEVATION (AS PROVIDED BY TOWN STAFF)



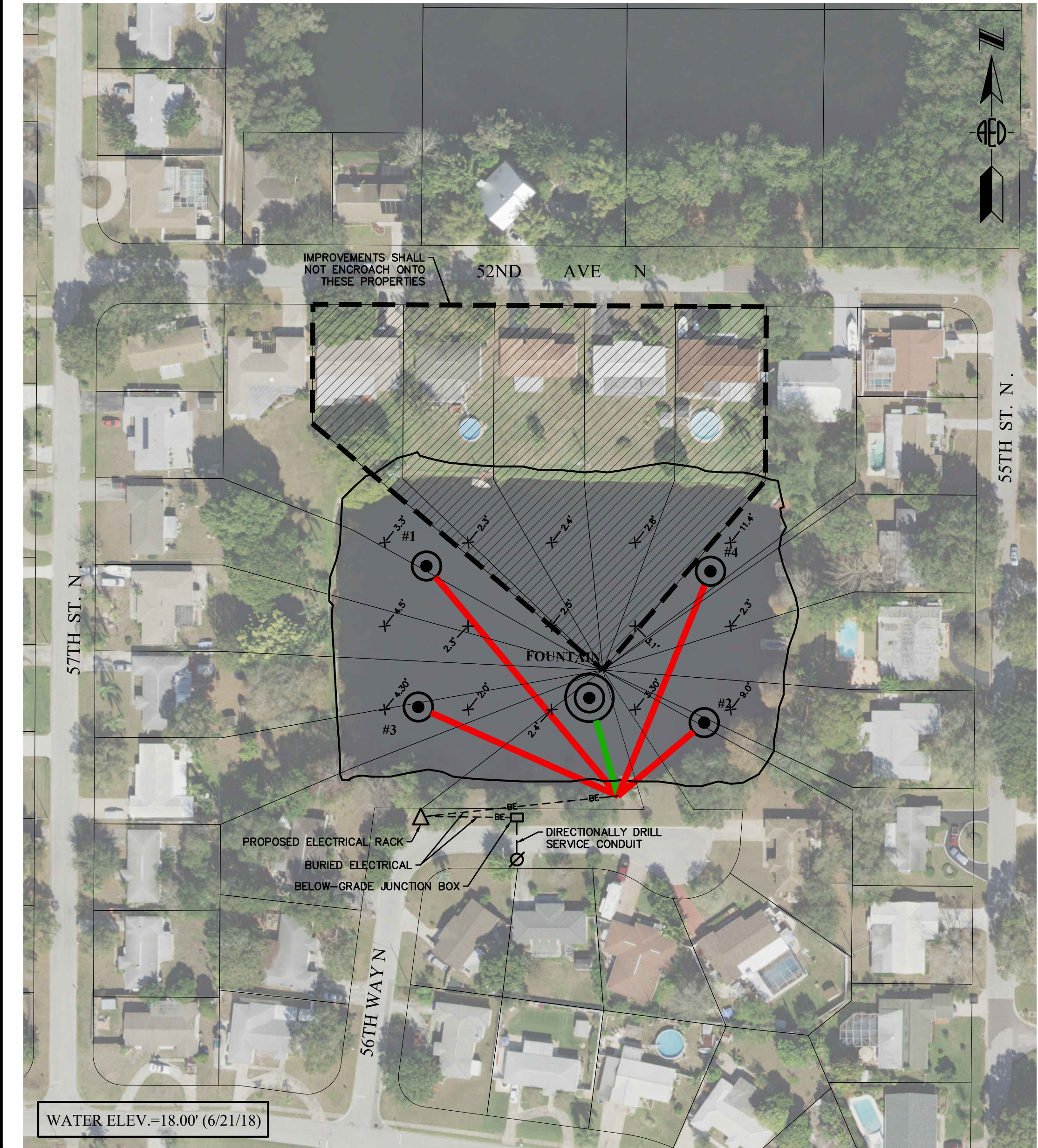
**TYPICAL APPURTENANCE LAYOUT**  
NOT TO SCALE



**TYPICAL ELECTRICAL SUPPORT RACK DETAIL**  
NOT TO SCALE



**LAKE LORI FOUNTAIN/DIFFUSER LAYOUT**  
SCALE: 1"=75'



**LAKE PAUL FOUNTAIN/DIFFUSER LAYOUT**  
SCALE: 1"=75'

NO.	REVISIONS	BY	DATE

SCALE: AS SHOWN  
DRAWN: S.A.T.  
DESIGNED: J.V.K.  
APPROVED: W.G.R.

**ADVANCED**  
ENGINEERING & DESIGN, INC.  
CIVIL • MUNICIPAL • SITE DESIGN • PERMITTING • PLANNING  
3931 68TH AVENUE NORTH • PINELLAS PARK, FL 33781 • Phone: 727.526.9158 • Fax: 727.527.9683 • www.aed-ll.com

TOWN OF KENNETH CITY  
STORMWATER LAKES WATER QUALITY PROJECT

**PROJECT PLAN**

DATE: 7/2/18  
PROJECT NO: 15-KC-21  
SHEET NO: **01000-2**