

RESOLUTION NO. 17-46

**RESOLUTION DEDICATING A PORTION OF COUNTY OWNED  
PROPERTY IN SECTION 03, TOWNSHIP 29 SOUTH, RANGE 15 EAST  
AS PUBLIC ROAD RIGHT-OF-WAY FOR THE SUNSET POINT ROAD  
AND NORTH BETTY LANE INTERSECTION IMPROVEMENT PROJECT.**

**WHEREAS**, the Pinellas County Department of Public Works is preparing for construction of an intersection improvement project at Sunset Point Road and North Betty Lane; and

**WHEREAS**, Pinellas County holds title in fee simple to certain lands as described in Official Record's Book 16536-2334, lying in Section 03, Township 29 South, Range 15 East; and

**WHEREAS**, a portion of these lands as described in "EXHIBIT A", attached hereto, are being used for the construction of said intersection improvement project and Pinellas County is desirous of establishing the necessary road rights-of-way from said County-owned property for the Sunset Point Road and North Betty Lane Intersection Improvement Project through this dedication.

**NOW THEREFORE, BE IT RESOLVED**, by the Board of County Commissioners of Pinellas County, Florida, duly assembled this 15th day of August, 2017, hereby dedicates and authorizes the Chairman to sign and the Clerk of the Circuit Court to attest and record this dedication of public road right-of-way for the Sunset Point Road and North Betty Lane Intersection Improvement Project, as described in "EXHIBIT A", attached hereto.

Commissioner Eggers offered the foregoing resolution and moved its adoption which was seconded by Commissioner Welch, and upon roll call the vote was:

**AYES:** Long, Welch, Eggers, Gerard, Justice, Morroni, and Seel.

**NAYS:** None.

**ABSENT OR NOT VOTING:** None.

APPROVED AS TO FORM

By: Christy Dawn Pemberton  
Office of the County Attorney

PINELLAS COUNTY  
 PUBLIC WORKS  
 SURVEY AND MAPPING DIVISION  
 22211 U.S. HIGHWAY 19 N.  
 CLEARWATER, FLORIDA 33765-2328



SECTION(S) 3 , TOWNSHIP 29 SOUTH, RANGE 15 EAST

DESCRIPTION

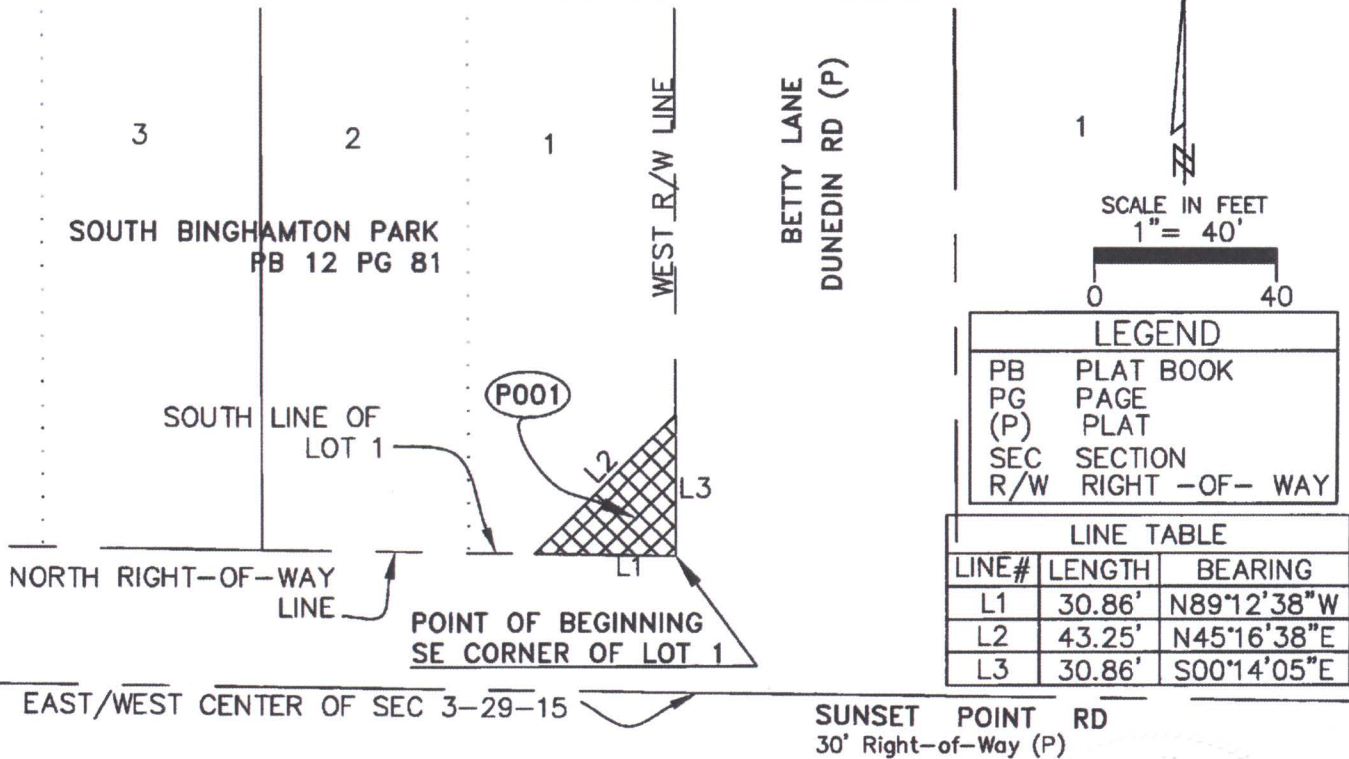
A triangular shaped tract of land been a portion of Lot 1, SOUTH BINGHAMTON PARK Subdivision according to Plat Book 12, Pages 81, public records of Pinellas County, Florida, lying within Section 3 Township 29 South, Range 15 East being more particularly described as follows:

BEGINNING at the southeast corner of Lot 1 of said SOUTH BINGHAMTON PARK Subdivision run (L1) N 89° 12' 38"W along the south line of said Lot 1, the same being the North Right-of Way line of Sunset Point Road, for a distance of 30.86 feet; (L2) thence N 45° 16' 38"E for a distance of 43.25 feet, to the West Right-of-Way line of Betty Lane; (3) thence continue S 00° 14' 05"E along the said West Right-of-Way line for a distance of 30.86 feet to the POINT OF BEGINNING.

CONTAINING: 476 square feet or 0.011 acres more or less.

BASIS OF BEARINGS: Bearings are based on the south line of Lot 1 of SOUTH BINGHAMTON PARK Subdivision according to Plat Book 12, Pages 81, public records of Pinellas County, being N 89° 12' 38"W.

SKETCH--NOT A SURVEY



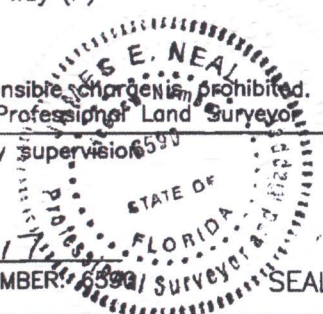
Additions or deletions by other than the Professional Land Surveyor in responsible charge is prohibited. Land Description is invalid without signature and/or embossed seal of the Professional Land Surveyor.

CALCULATED BY:  
DMcD  
 CHECKED BY:  
GD  
 S.F.N.:  
2067

The above Sketch and/or Land description was prepared under my supervision and is true and correct to the best of my knowledge and belief.

By: Pinellas County Survey and Mapping Division

JAMES E. NEAL, PROFESSIONAL SURVEYOR AND MAPPER LICENSE NUMBER: 6590  
 STATE OF FLORIDA, PHONE # (727) 464-8904  
 DATE 6/28/2017





I, KENNETH P. BURKE, Clerk of the Circuit Court and Clerk Ex-Officio, Board of County Commissioners, do hereby certify that the above and foregoing is a true and correct copy of the original as it appears in the official files of the Board of County Commissioners of Pinellas County, Florida. Witness my hand and seal of said County FL this 24 day of AUGUST A.D. 20 17

KENNETH P. BURKE, Clerk of the Circuit Court Ex-Officio Clerk of the Board of County Commissioners, Pinellas County, Florida.

By *James S. Salter*  
Deputy Clerk