

RESOLUTION NO.: 16-27

RESOLUTION OF THE BOARD OF COUNTY COMMISSIONERS (BOARD) OF PINELLAS COUNTY TO DECLARE AS SURPLUS PARCEL NUMBERS LISTED ON EXHIBITS "A-1" & "A-2" ATTACHED HERETO; AUTHORIZE THE SALE AND CONVEYANCE OF PARCELS PURSUANT TO FLORIDA STATUTES §125.35; AUTHORIZE THE COUNTY ADMINISTRATOR TO EXECUTE THE LEGAL INSTRUMENTS NECESSARY FOR THE CONVEYANCE; AUTHORIZE THE CHAIRMAN TO EXECUTE THE COUNTY DEEDS; AND AUTHORIZE THE CLERK TO RECORD THE COUNTY DEEDS AND RESOLUTION IN THE PUBLIC RECORDS OF PINELLAS COUNTY, FLORIDA.

WHEREAS, the subject parcels, referenced herein above, were acquired by Pinellas County (County) through various instruments recorded in the Official Records Book of Pinellas County, Florida.

WHEREAS, the parcels were acquired with Community Development Block Grant Funding, a federal grant program, for the purpose of neighborhood revitalization; and

WHEREAS, after due consideration, the County has determined that the parcels are not needed for any County purposes; and

WHEREAS, in accordance with Chapter §125, Florida Statutes, this Board has determined that it is in the best interest of the County to declare surplus and convey the parcels for housing development and thereby return said properties to the tax rolls; and

WHEREAS, the County desires to sell the remaining parcels, as identified herein above; and all mineral rights as allowed by Florida Statues §270.11; and

WHEREAS, the proceeds from the sales of said parcels is defined as program income by the County's Community Development Block Grant Program; and

WHEREAS, the proceeds from the sales will be deposited into the County's Community Development Block Grant account.

NOW, THEREFORE, BE IT RESOLVED by this Board of County Commissioners of Pinellas County, Florida, in regular session duly assembled on this twenty-sixth day of April 2016, that this Board declare the parcels surplus, as described in Exhibits "A-1" and "A-2" attached hereto.

BE IT FURTHER RESOLVED the County Administrator is authorized to advertise and sell the remaining surplus parcels as set forth hereinabove.

BE IT FURTHER RESOLVED the County Administrator is authorized execute the legal instruments necessary for the conveyances.

BE IT FURTHER RESOLVED that the Chairman is authorized to sign and attest County Deeds, and the Clerk to record this resolution in the Public Records of Pinellas County, Florida

Commissioner Welch offered the foregoing resolution and moved its adoption, which was seconded by Commissioner Long and upon roll call the vote was:

AYES: Justice, Long, Welch, Eggers, Gerard, Seel and Morroni.

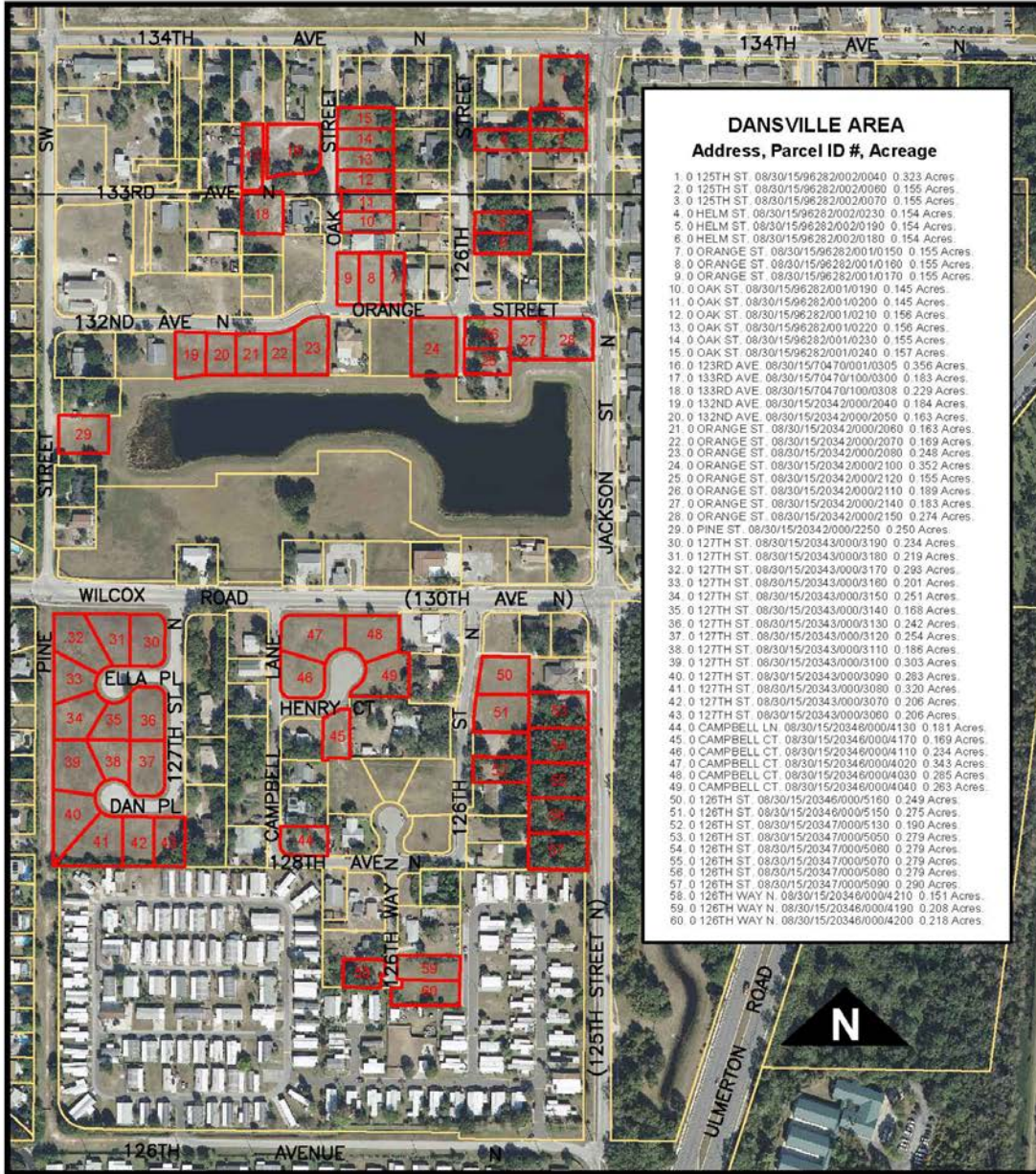
NAYS: None.

ABSENT AND NOT VOTING: None.

APPROVED AS TO FORM

By: Muhammad A. Zao
Office of the County Attorney

Exhibit "A-1" Dansville Area Location Map



DANSVILLE AREA			
Address, Parcel ID #, Acreage			
1	0 125TH ST	08/30/15/96282/0020040	0.323 Acres.
2	0 125TH ST	08/30/15/96282/0020060	0.155 Acres.
3	0 125TH ST	08/30/15/96282/0020070	0.155 Acres.
4	0 HELM ST	08/30/15/96282/0020230	0.154 Acres.
5	0 HELM ST	08/30/15/96282/0020190	0.154 Acres.
6	0 HELM ST	08/30/15/96282/0020180	0.154 Acres.
7	0 ORANGE ST	08/30/15/96282/0010150	0.155 Acres.
8	0 ORANGE ST	08/30/15/96282/0010160	0.155 Acres.
9	0 ORANGE ST	08/30/15/96282/0010170	0.155 Acres.
10	0 OAK ST	08/30/15/96282/0010190	0.145 Acres.
11	0 OAK ST	08/30/15/96282/0010200	0.145 Acres.
12	0 OAK ST	08/30/15/96282/0010210	0.156 Acres.
13	0 OAK ST	08/30/15/96282/0010220	0.156 Acres.
14	0 OAK ST	08/30/15/96282/0010230	0.155 Acres.
15	0 OAK ST	08/30/15/96282/0010240	0.157 Acres.
16	0 123RD AVE	08/30/15/70470/00010305	0.356 Acres.
17	0 133RD AVE	08/30/15/70470/100/0300	0.163 Acres.
18	0 133RD AVE	08/30/15/70470/100/0308	0.229 Acres.
19	0 132ND AVE	08/30/15/20342/000/2040	0.184 Acres.
20	0 132ND AVE	08/30/15/20342/000/2050	0.163 Acres.
21	0 ORANGE ST	08/30/15/20342/000/2060	0.163 Acres.
22	0 ORANGE ST	08/30/15/20342/000/2070	0.169 Acres.
23	0 ORANGE ST	08/30/15/20342/000/2080	0.248 Acres.
24	0 ORANGE ST	08/30/15/20342/000/2100	0.352 Acres.
25	0 ORANGE ST	08/30/15/20342/000/2120	0.155 Acres.
26	0 ORANGE ST	08/30/15/20342/000/2110	0.189 Acres.
27	0 ORANGE ST	08/30/15/20342/000/2140	0.163 Acres.
28	0 ORANGE ST	08/30/15/20342/000/2150	0.274 Acres.
29	0 PINE ST	08/30/15/20342/000/2250	0.250 Acres.
30	0 127TH ST	08/30/15/20343/000/3190	0.234 Acres.
31	0 127TH ST	08/30/15/20343/000/3180	0.219 Acres.
32	0 127TH ST	08/30/15/20343/000/3170	0.293 Acres.
33	0 127TH ST	08/30/15/20343/000/3160	0.201 Acres.
34	0 127TH ST	08/30/15/20343/000/3150	0.251 Acres.
35	0 127TH ST	08/30/15/20343/000/3140	0.168 Acres.
36	0 127TH ST	08/30/15/20343/000/3130	0.242 Acres.
37	0 127TH ST	08/30/15/20343/000/3120	0.254 Acres.
38	0 127TH ST	08/30/15/20343/000/3110	0.186 Acres.
39	0 127TH ST	08/30/15/20343/000/3100	0.303 Acres.
40	0 127TH ST	08/30/15/20343/000/3090	0.263 Acres.
41	0 127TH ST	08/30/15/20343/000/3080	0.320 Acres.
42	0 127TH ST	08/30/15/20343/000/3070	0.206 Acres.
43	0 127TH ST	08/30/15/20343/000/3060	0.206 Acres.
44	0 CAMPBELL LN	08/30/15/20346/000/4130	0.181 Acres.
45	0 CAMPBELL CT	08/30/15/20346/000/4170	0.169 Acres.
46	0 CAMPBELL CT	08/30/15/20346/000/4110	0.234 Acres.
47	0 CAMPBELL CT	08/30/15/20346/000/4020	0.343 Acres.
48	0 CAMPBELL CT	08/30/15/20346/000/4030	0.285 Acres.
49	0 CAMPBELL CT	08/30/15/20346/000/4040	0.263 Acres.
50	0 126TH ST	08/30/15/20346/000/5160	0.249 Acres.
51	0 126TH ST	08/30/15/20346/000/5150	0.275 Acres.
52	0 126TH ST	08/30/15/20347/000/5130	0.190 Acres.
53	0 126TH ST	08/30/15/20347/000/5050	0.279 Acres.
54	0 126TH ST	08/30/15/20347/000/5080	0.279 Acres.
55	0 126TH ST	08/30/15/20347/000/5070	0.279 Acres.
56	0 126TH ST	08/30/15/20347/000/5090	0.279 Acres.
57	0 126TH ST	08/30/15/20347/000/5090	0.290 Acres.
58	0 126TH WAY N	08/30/15/20346/000/4210	0.151 Acres.
59	0 126TH WAY N	08/30/15/20346/000/4190	0.208 Acres.
60	0 126TH WAY N	08/30/15/20346/000/4200	0.218 Acres.

Exhibit "A-2" Greater Ridgecrest Area Location Map

