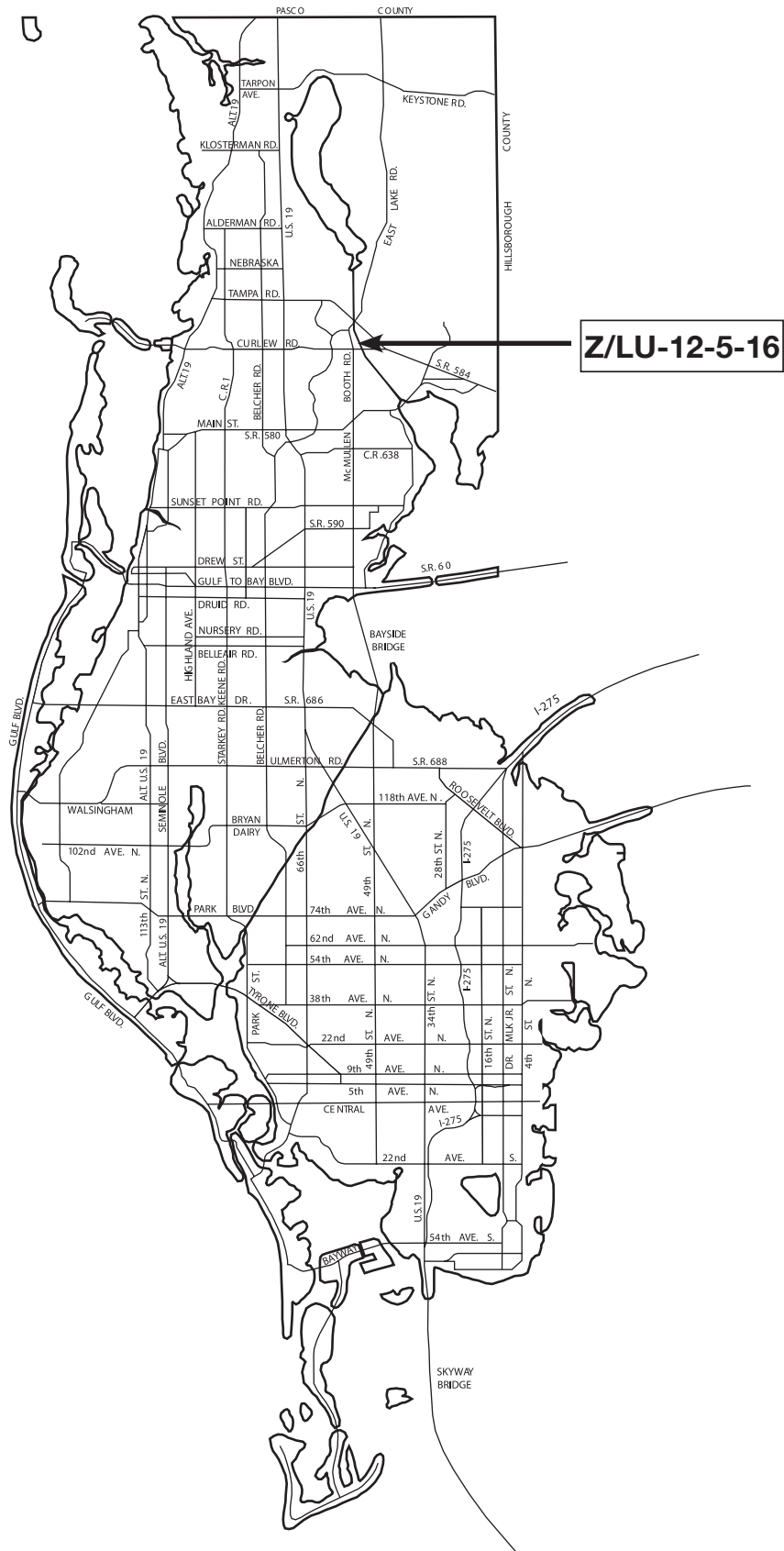




# LOCATION MAP

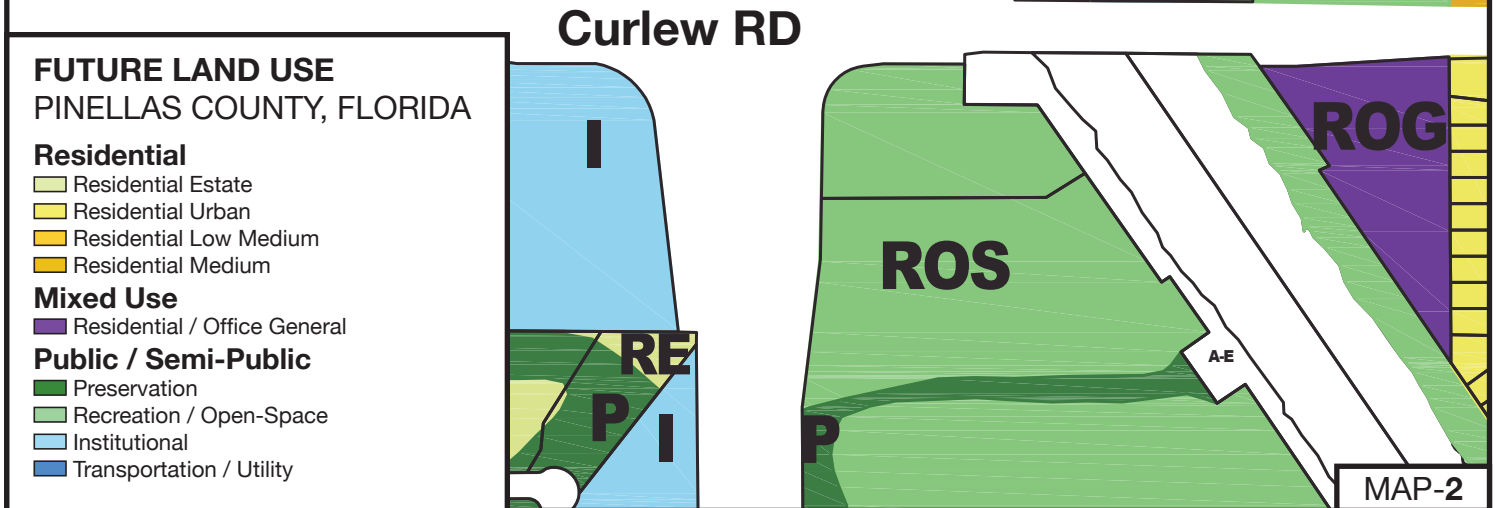
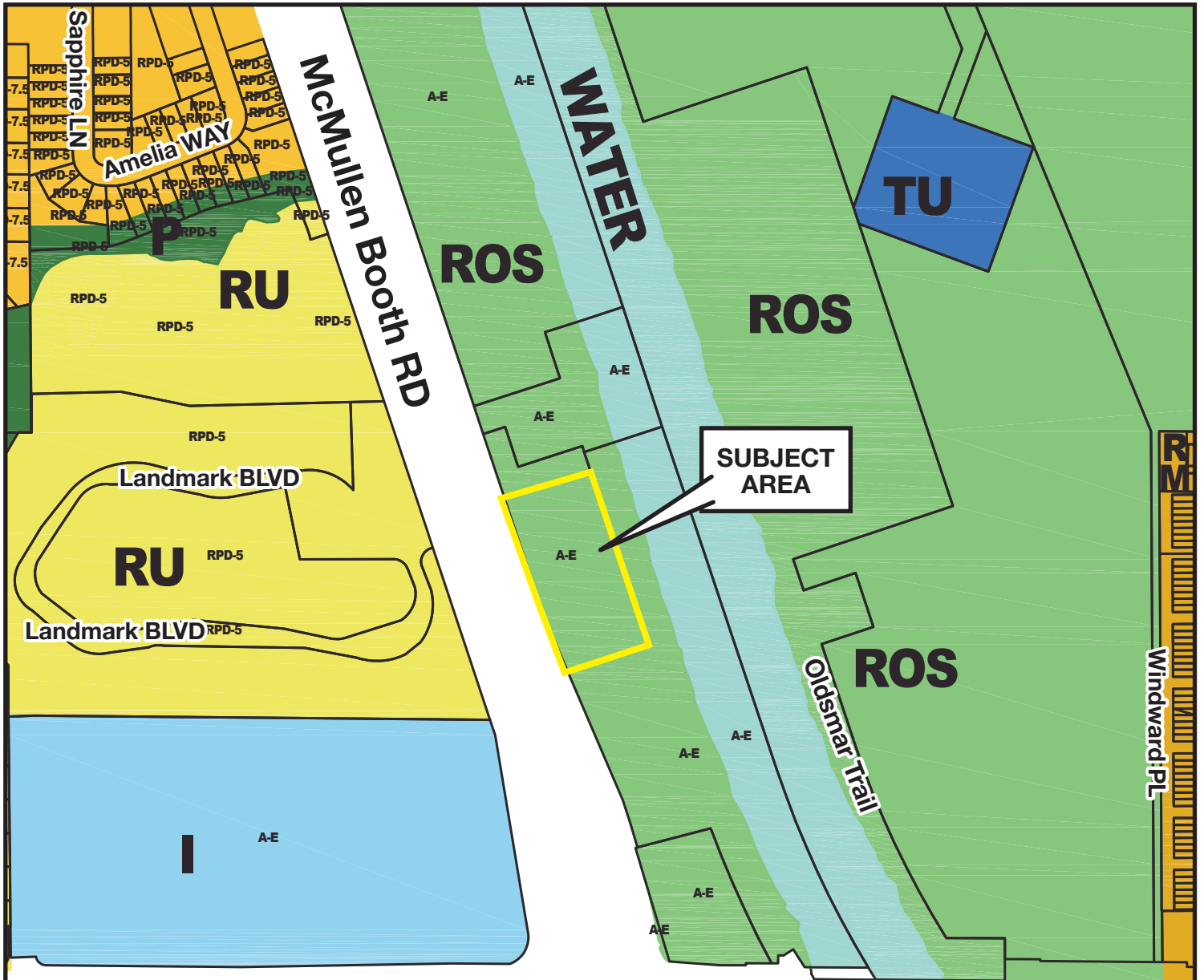


MAP-1

**Z/LU-12-5-16**

**Zoning** From: A-E, Agricultural Estate Residential  
 To: PSP-CO, Public/Semi-Public - Conditional Overlay  
 Conditional Overlay limiting the use to a medical clinic with a max 0.2 FAR  
**Land Use** From: Recreation/Open Space  
 To: Institutional





**FUTURE LAND USE**  
PINELLAS COUNTY, FLORIDA

**Residential**

- Residential Estate
- Residential Urban
- Residential Low Medium
- Residential Medium

**Mixed Use**

- Residential / Office General

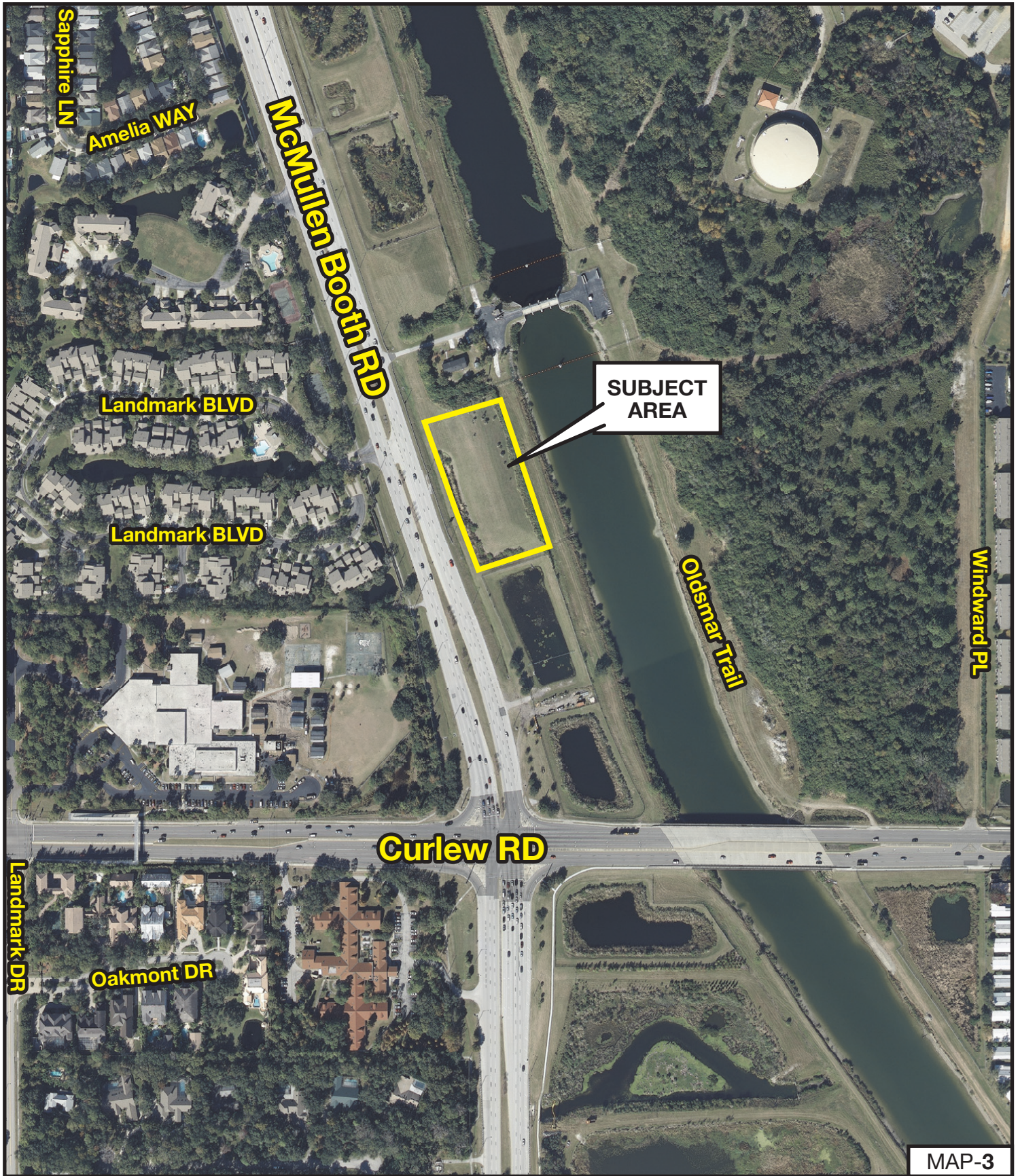
**Public / Semi-Public**

- Preservation
- Recreation / Open-Space
- Institutional
- Transportation / Utility

<b>Z/LU-12-5-16</b>	<p><b>Zoning</b>    <b>From:</b> A-E, Agricultural Estate Residential  <b>To:</b> PSP-CO, Public/Semi-Public - Conditional Overlay          Conditional Overlay limiting the use to a medical clinic with a max 0.2 FAR</p> <p><b>Land Use</b> <b>From:</b> Recreation/Open Space  <b>To:</b> Institutional</p>		
Parcel I.D. 16/28/16/00000/240/0140    Prepared by: Pinellas County Planning Department July 2016			

MAP-2





MAP-3

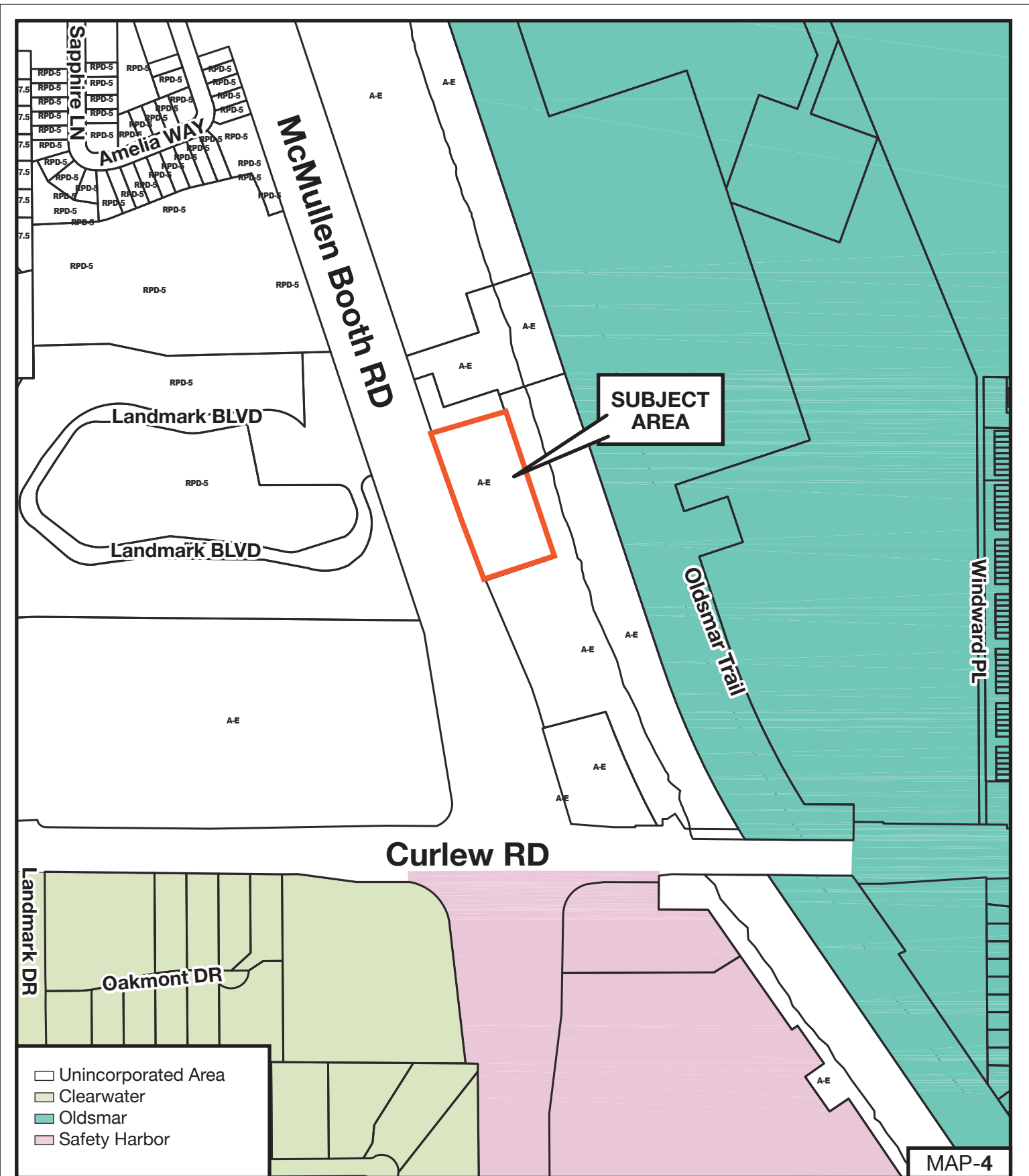
**Z/LU-12-5-16**

**Zoning** From: A-E, Agricultural Estate Residential  
 To: PSP-CO, Public/Semi-Public - Conditional Overlay  
 Conditional Overlay limiting the use to a medical clinic with a max 0.2 FAR

**Land Use** From: Recreation/Open Space  
 To: Institutional

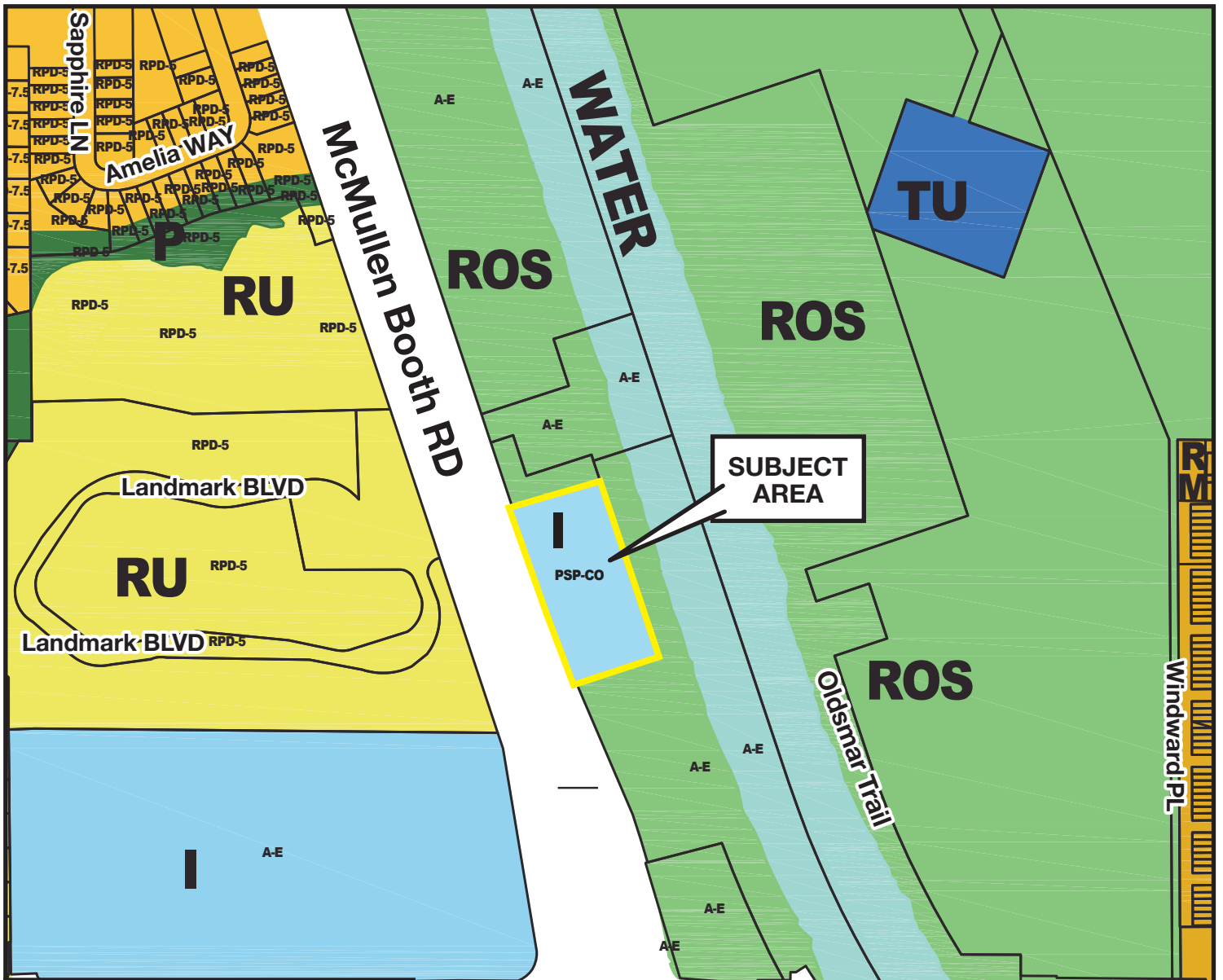






MAP-4

<p><b>Z/LU-12-5-16</b></p>	<p><b>Zoning</b>    <b>From:</b> A-E, Agricultural Estate Residential  <b>To:</b> PSP-CO, Public/Semi-Public - Conditional Overlay          Conditional Overlay limiting the use to a medical clinic with a max 0.2 FAR</p>		
	<p><b>Land Use</b> <b>From:</b> Recreation/Open Space  <b>To:</b> Institutional</p>		
<p>Parcel I.D. 16/28/16/00000/240/0140    Prepared by: Pinellas County Planning Department July 2016</p>			



**FUTURE LAND USE  
PINELLAS COUNTY, FLORIDA**

**Residential**

- Residential Estate
- Residential Urban
- Residential Low Medium
- Residential Medium

**Mixed Use**

- Residential / Office Limited

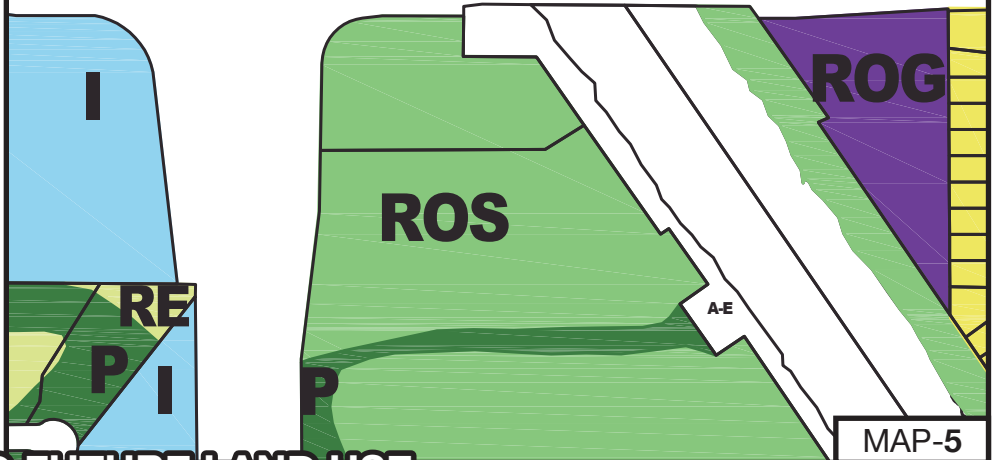
**Mixed Use**

- Residential / Office General

**Public / Semi-Public**

- Preservation
- Recreation / Open-Space
- Institutional
- Transportation / Utility

**Curlew RD**



MAP-5

**PROPOSED FUTURE LAND USE**

**Z/LU-12-5-16**

**Zoning** From: A-E, Agricultural Estate Residential  
 To: PSP-CO, Public/Semi-Public - Conditional Overlay  
 Conditional Overlay limiting the use to a medical clinic with a max 0.2 FAR

**Land Use** From: Recreation/Open Space  
 To: Institutional

