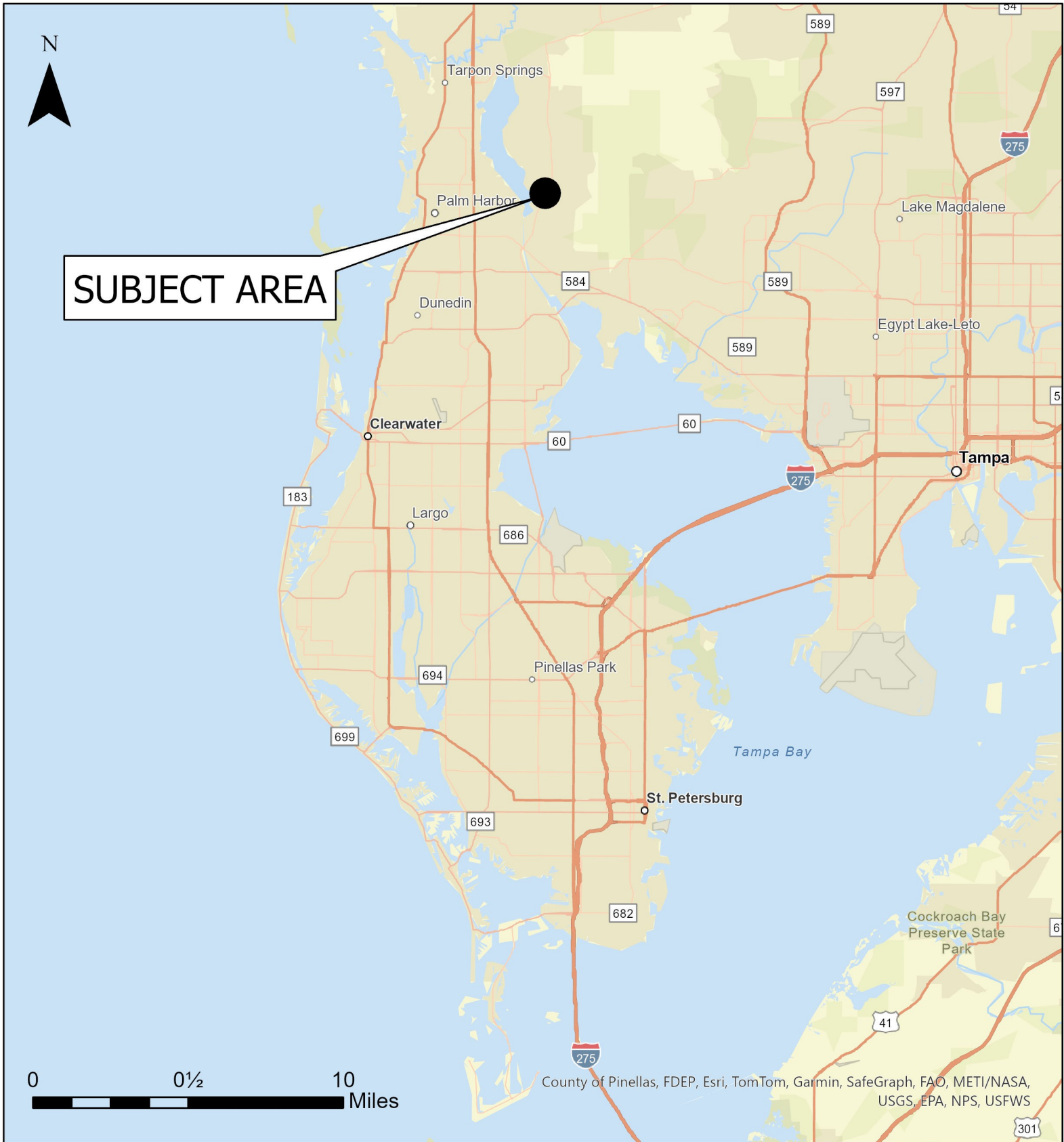


Case CW25-07

Map 1: Location Map



JURISDICTION: Pinellas County

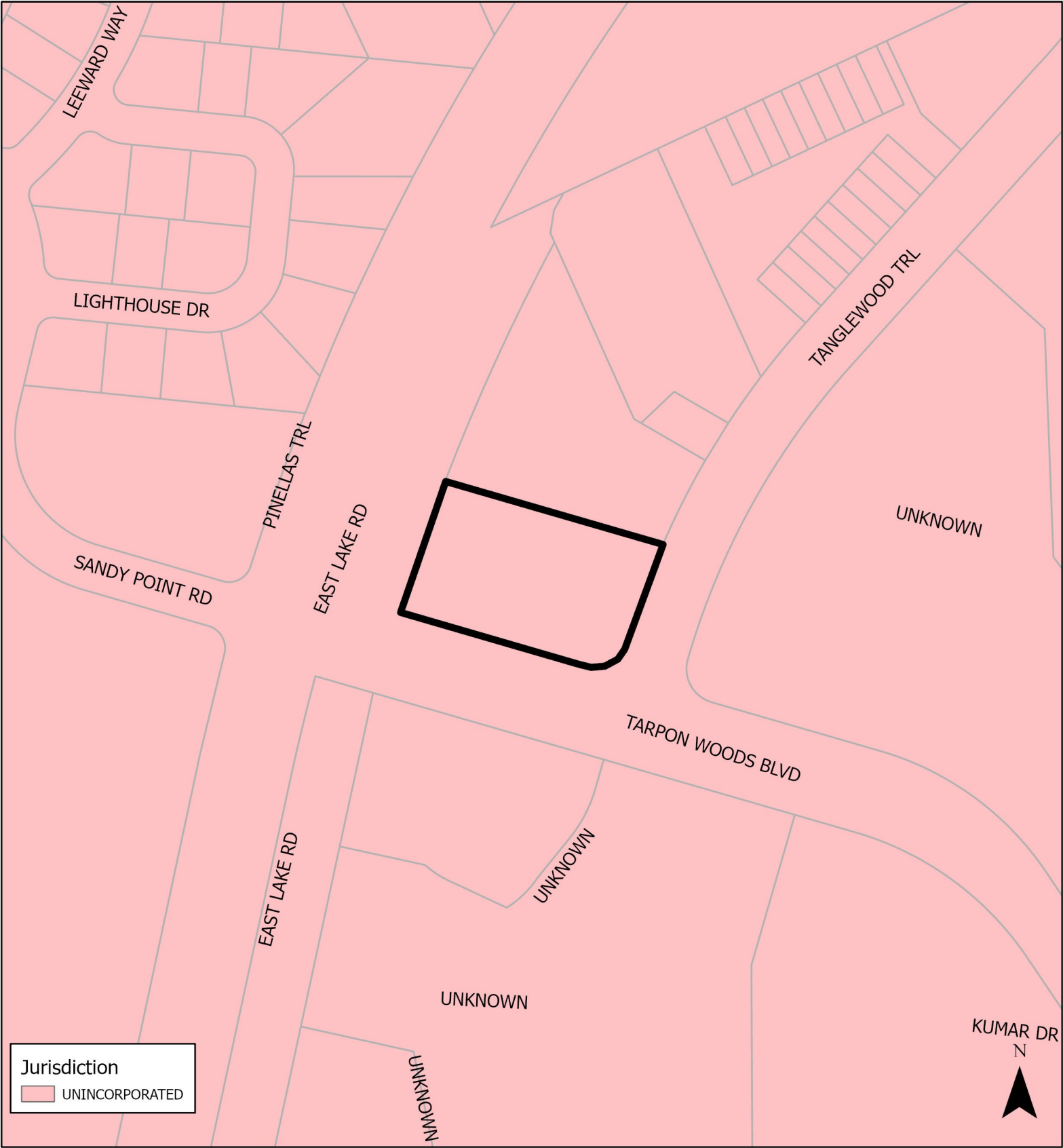
FROM: Office

AREA: 1.16 acres m.o.l.

TO: Retail & Services

Case CW25-07

Map 2: Jurisdictional Map



JURISDICTION: Pinellas County **FROM:** Office
AREA: 1.16 acres m.o.l. **TO:** Retail & Services



Case CW25-07

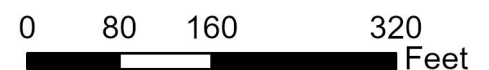
Map 3: Aerial Map



JURISDICTION: Pinellas County **FROM:** Office

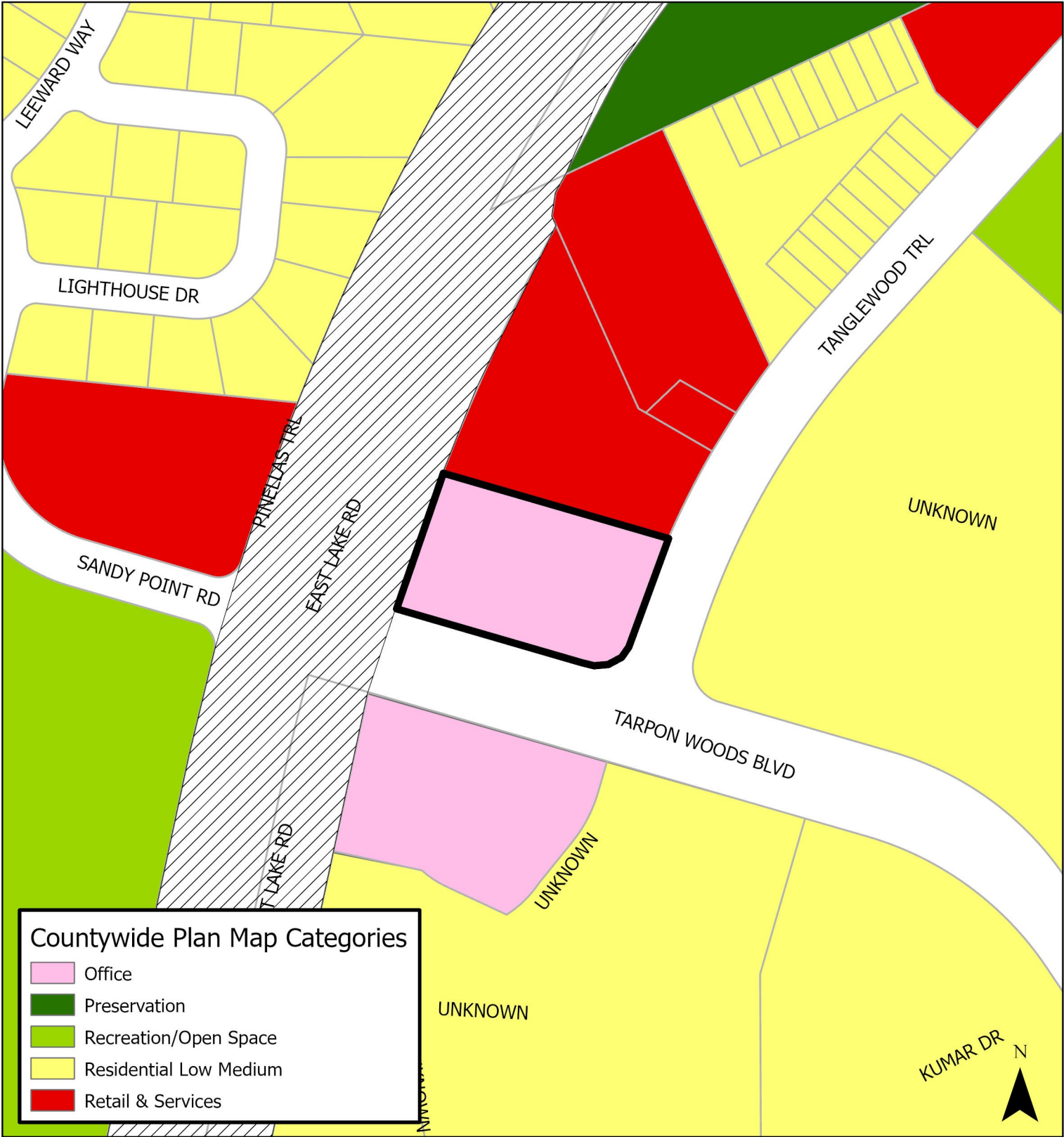
AREA: 1.16 acres m.o.l.

TO: Retail & Services



Case CW25-07

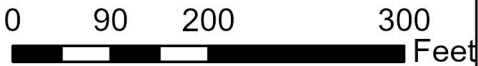
Map 4: Current Countywide Plan Map

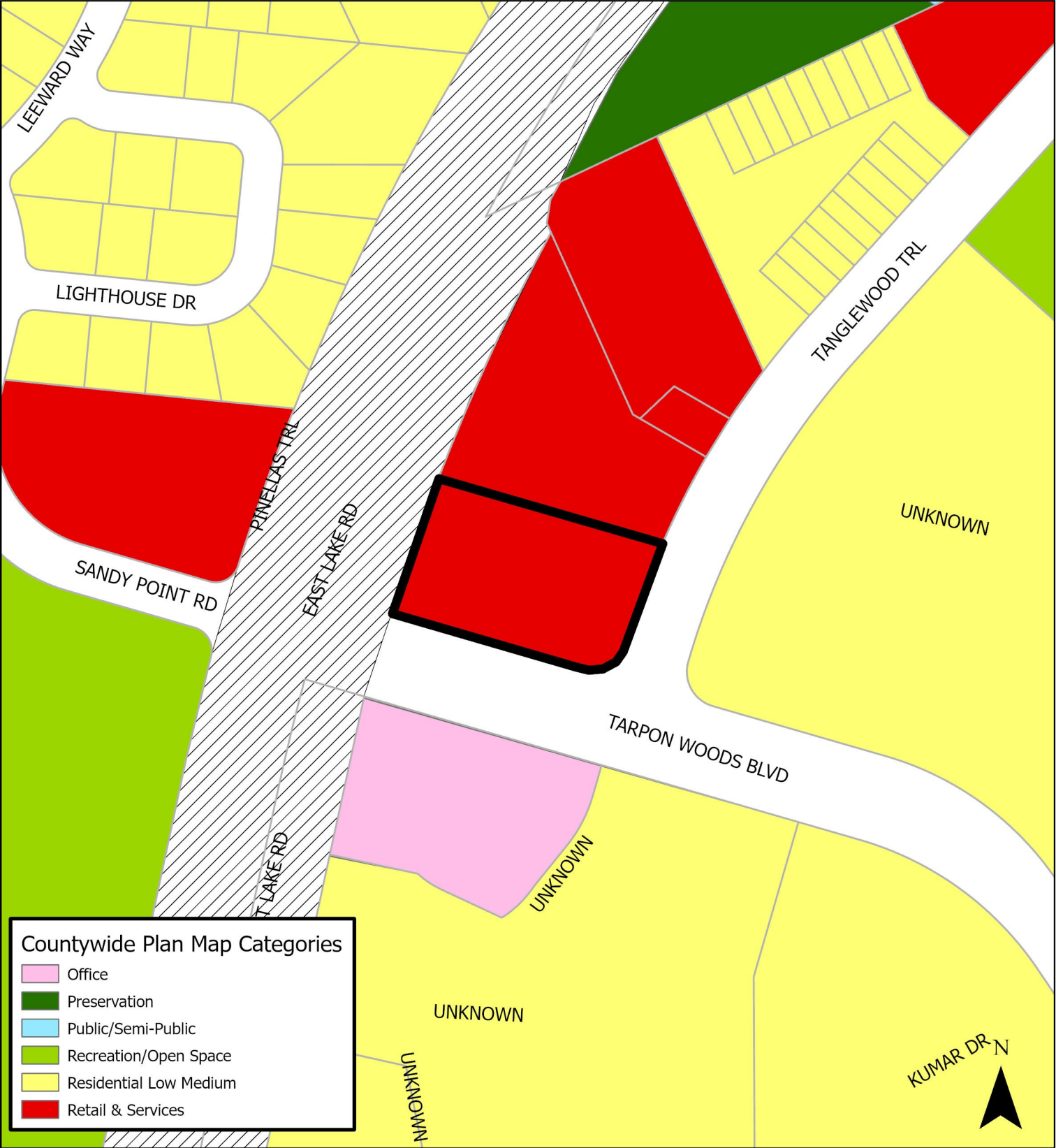


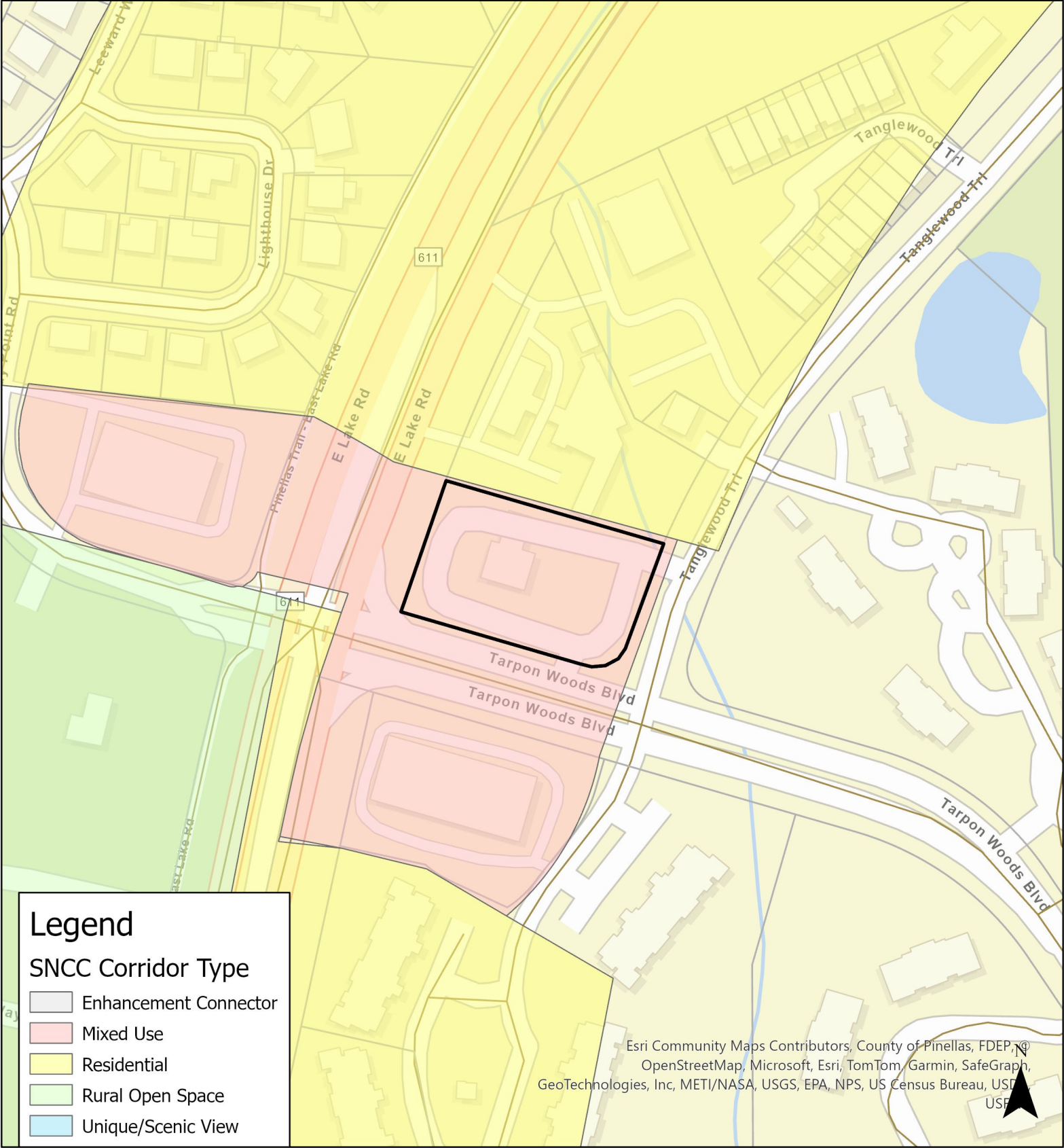
Countywide Plan Map Categories

- Office
- Preservation
- Recreation/Open Space
- Residential Low Medium
- Retail & Services

JURISDICTION: Pinellas County **FROM:** Office
AREA: 1.16 acres m.o.l **TO:** Retail & Services



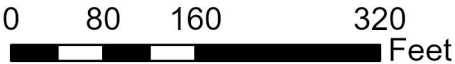




JURISDICTION: Pinellas County FROM: Office

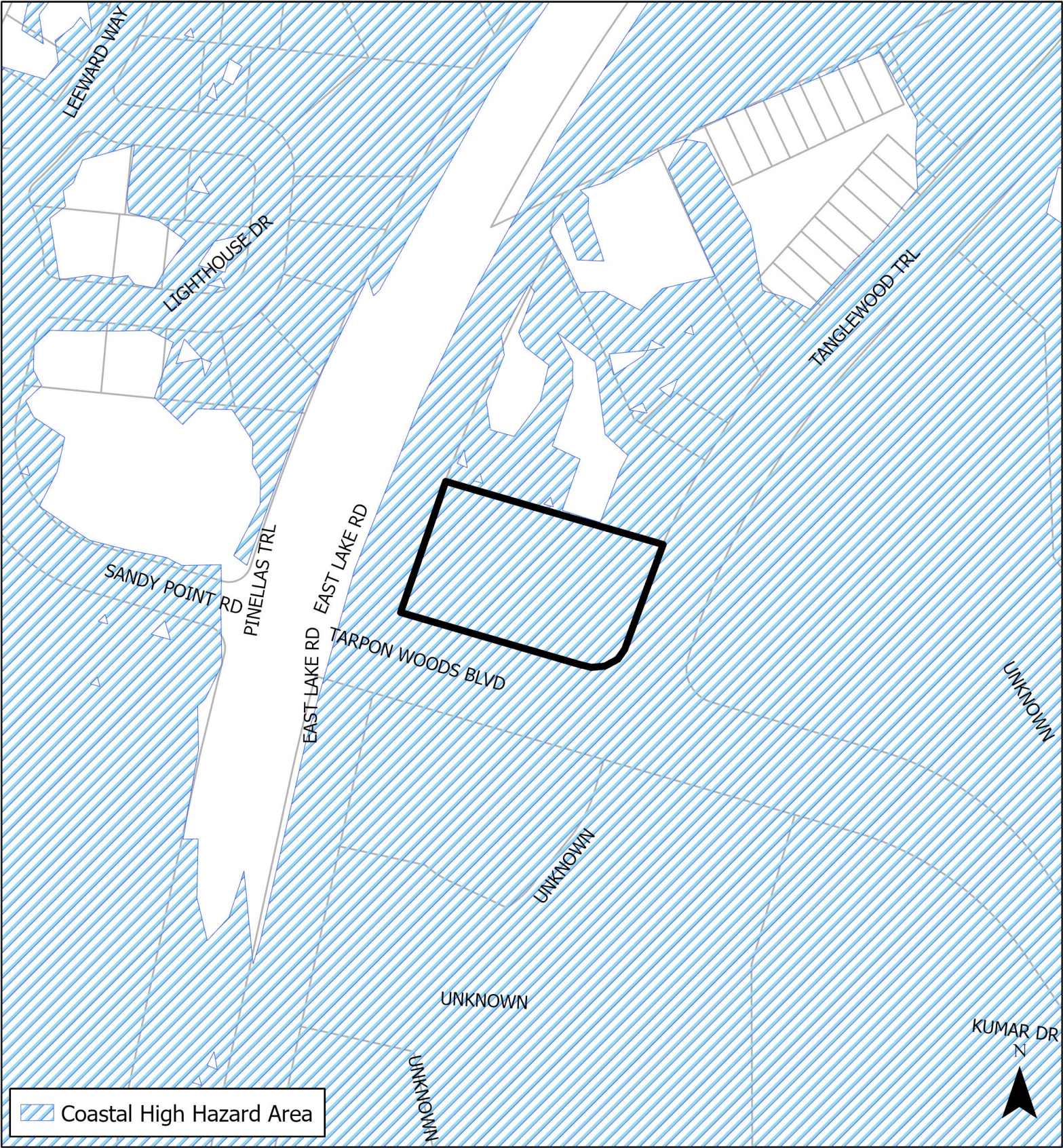
AREA: 1.16 acres m.o.l.

TO: Retail & Services



Case CW25-07

Map 7: Coastal High Hazard Area



JURISDICTION: Pinellas County **FROM:** Office
AREA: 1.16 acres m.o.l. **TO:** Retail & Services

