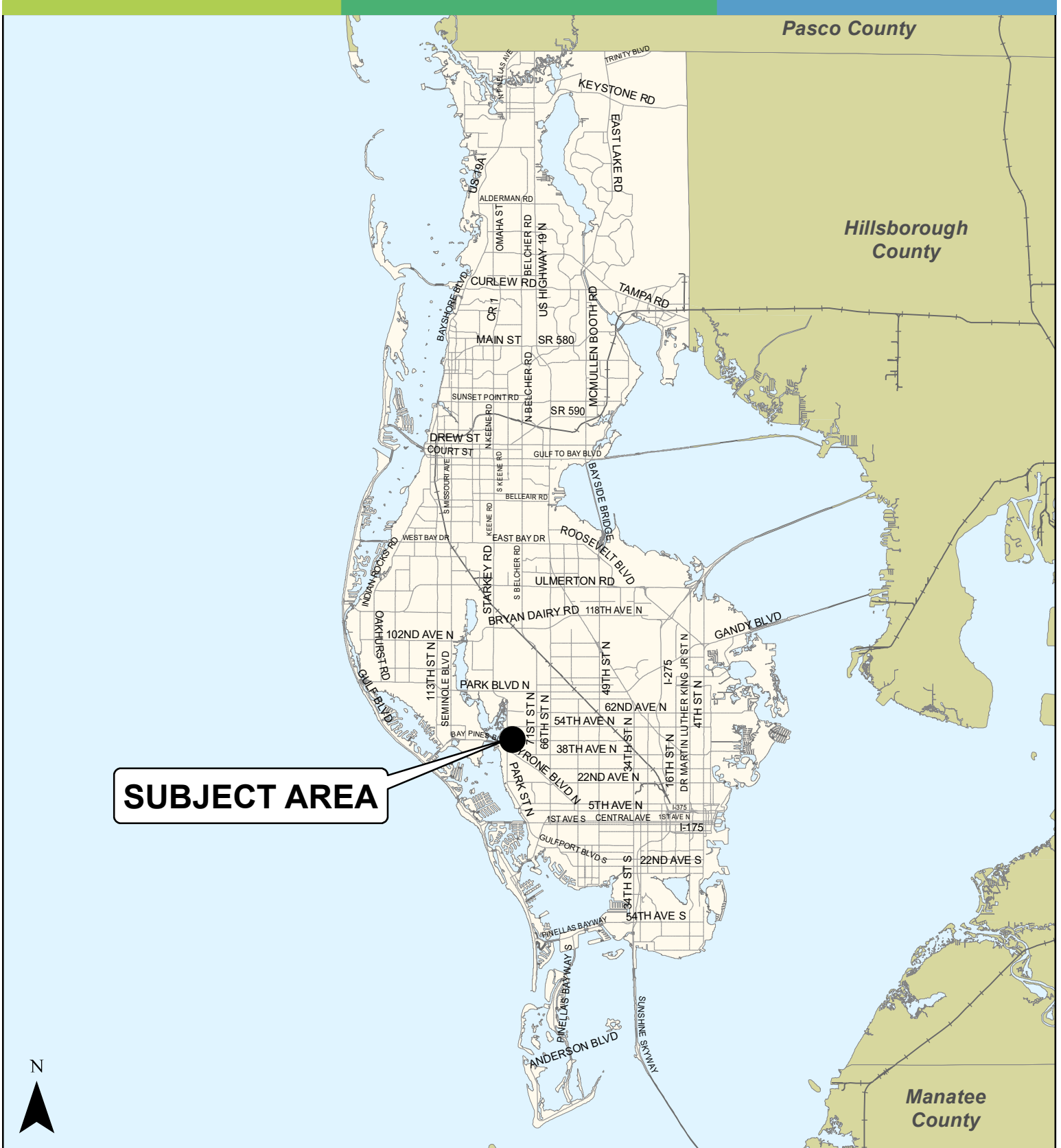


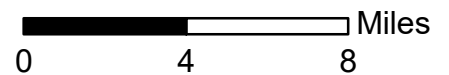
Case CW19-20

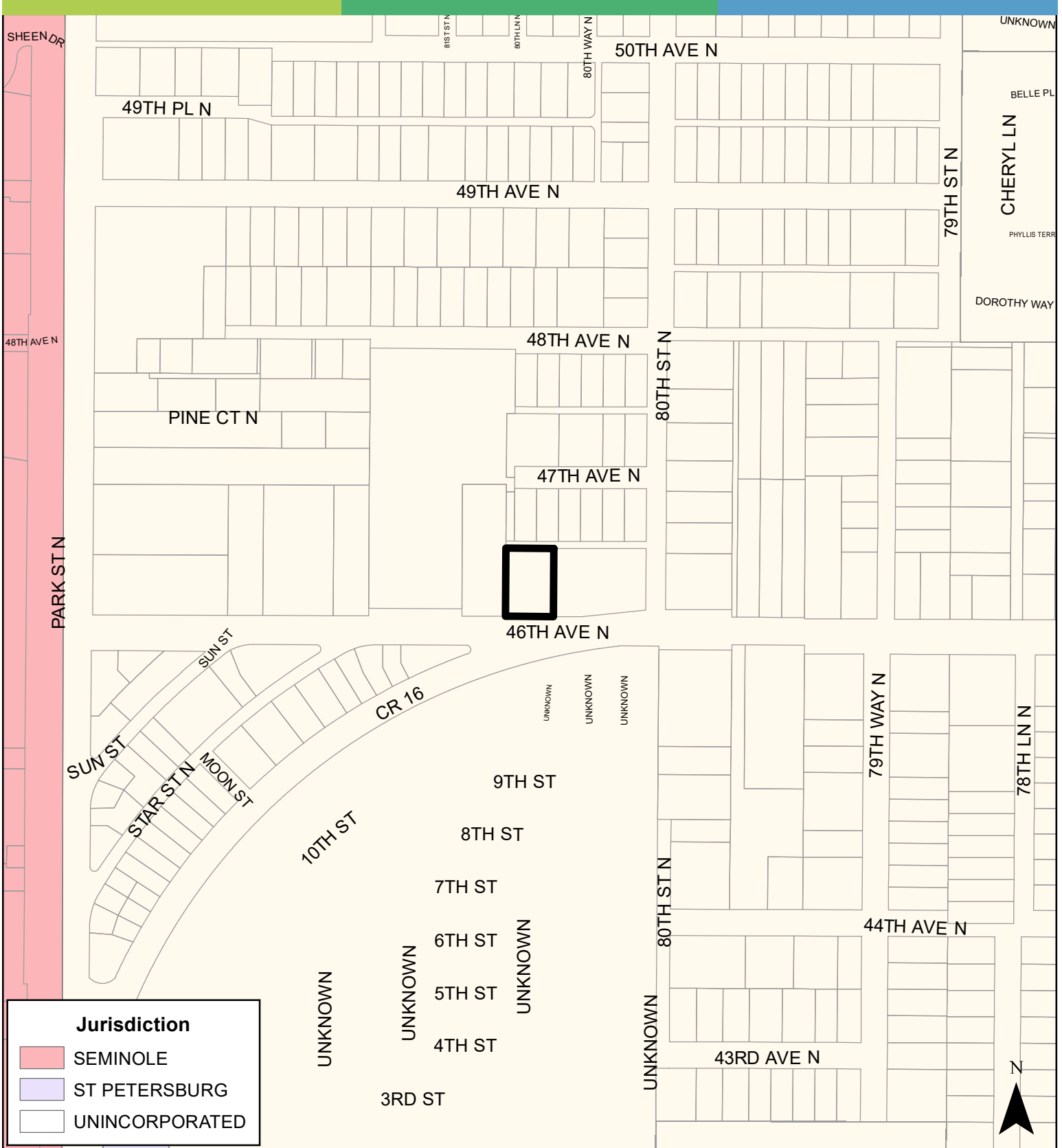
Map 1: Location Map



JURISDICTION: Pinellas County **FROM:** Residential Low Medium

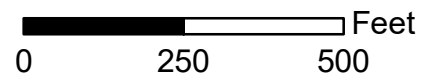
AREA: 0.39 Acres **TO:** Office





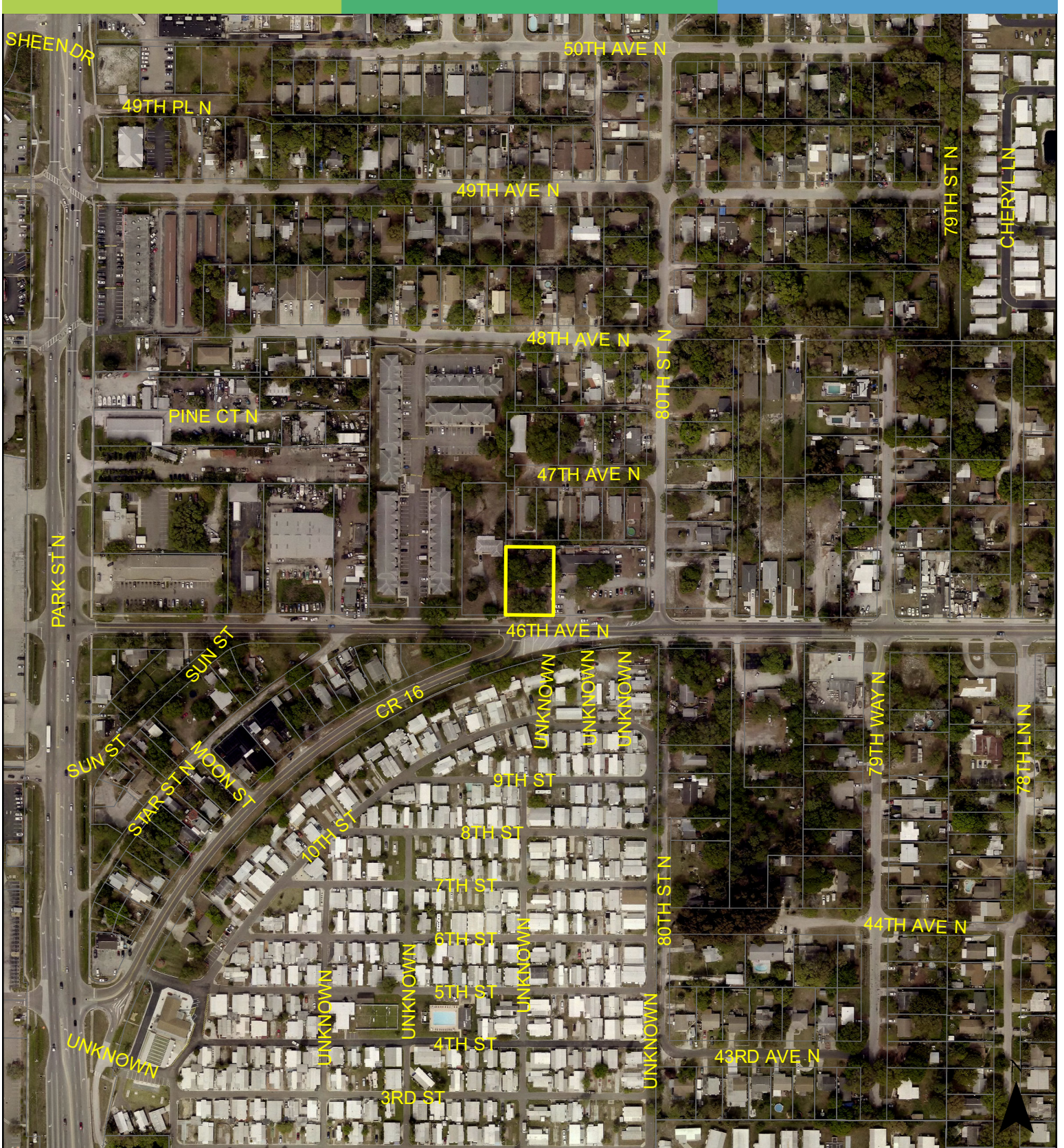
JURISDICTION: Pinellas County **FROM:** Residential Low Medium

AREA: 0.39 Acres **TO:** Office



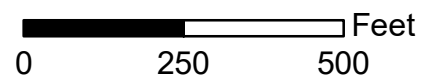
Case CW19-20

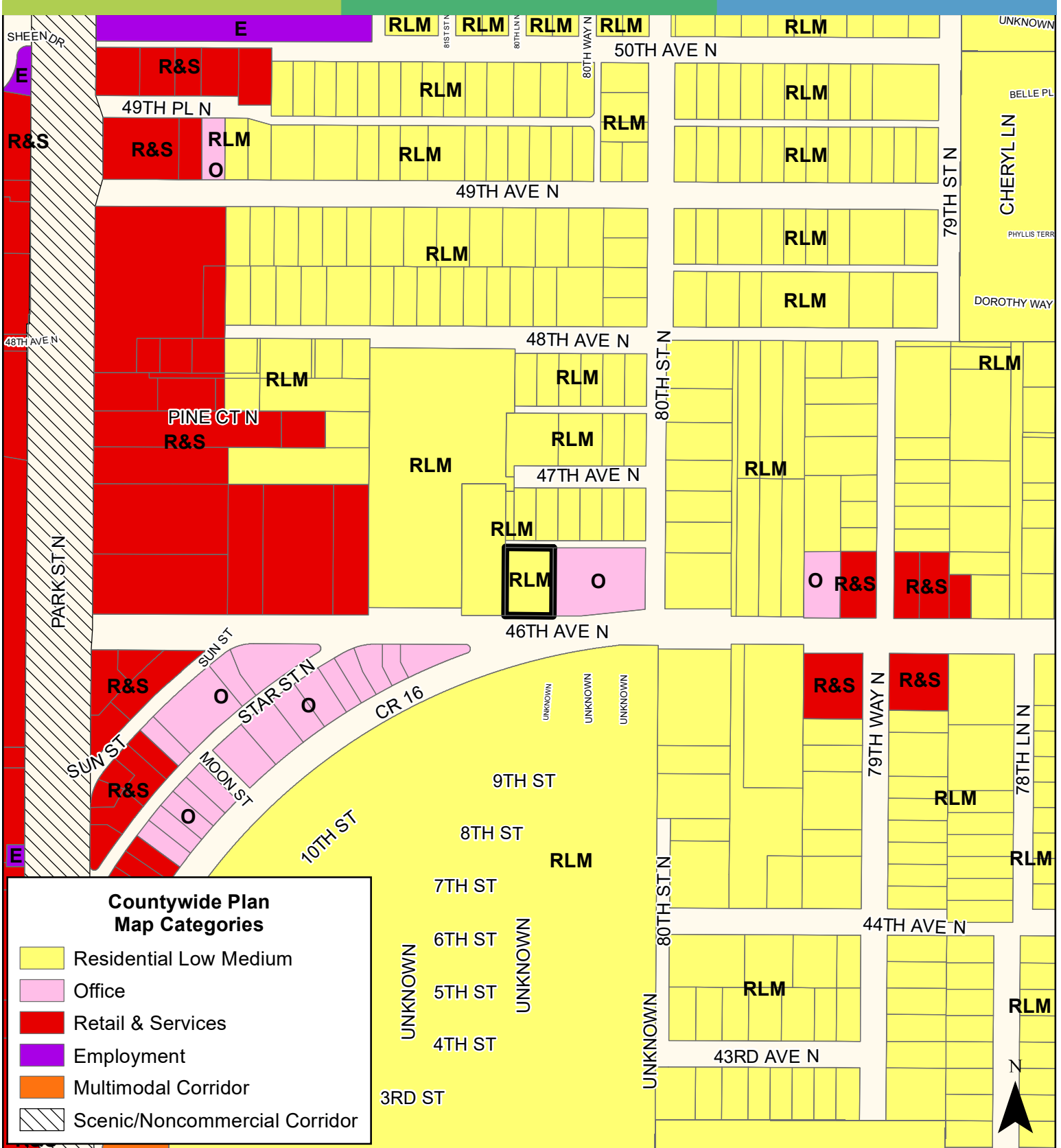
Map 3: Aerial Map



JURISDICTION: Pinellas County **FROM:** Residential Low Medium

AREA: 0.39 Acres **TO:** Office





Countywide Plan Map Categories

- Residential Low Medium
- Office
- Retail & Services
- Employment
- Multimodal Corridor
- Scenic/Noncommercial Corridor

JURISDICTION: Pinellas County **FROM:** Residential Low Medium
AREA: 0.39 Acres **TO:** Office

