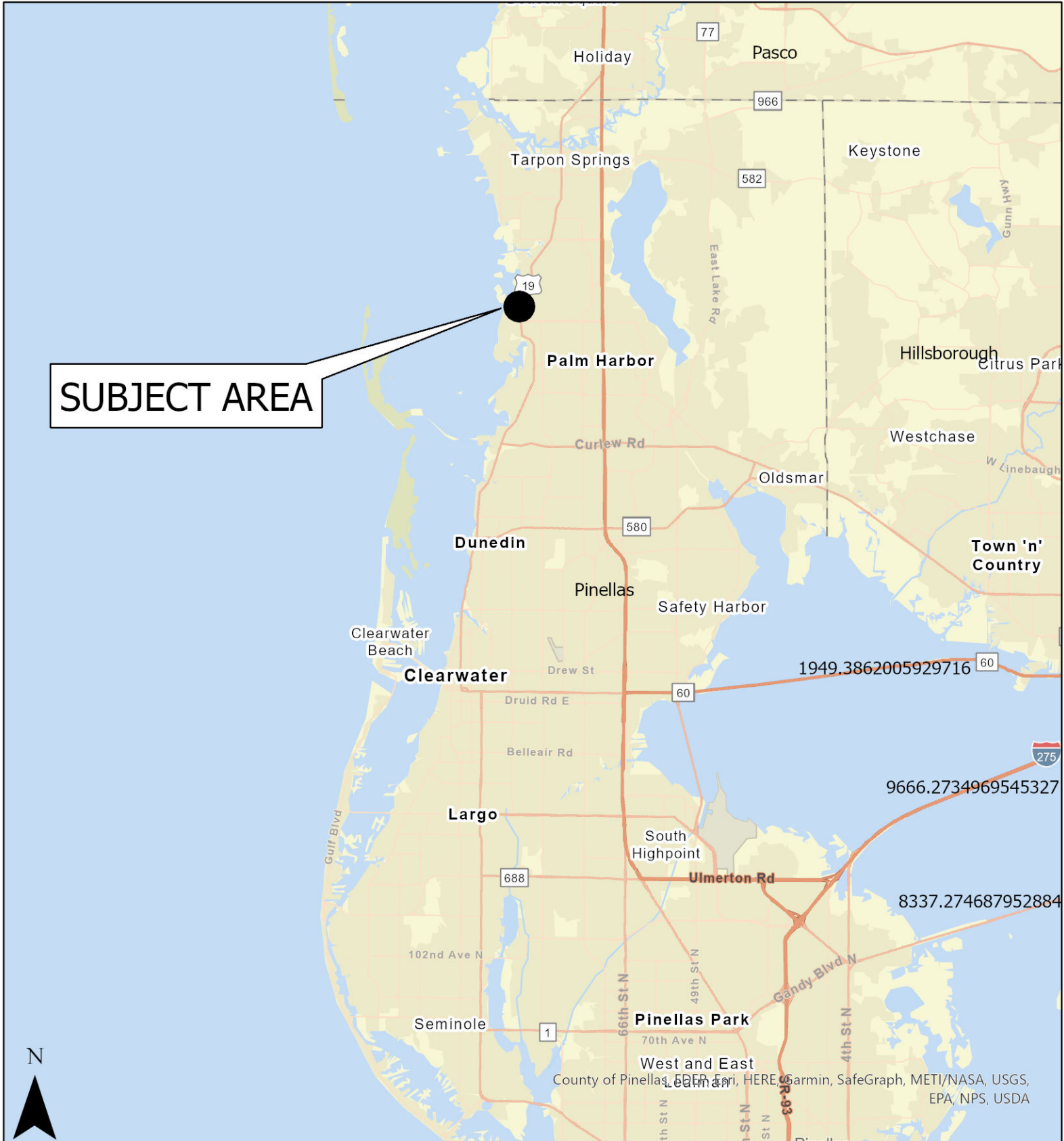


Case CW22-19

Map 1: Location Map



JURISDICTION: Pinellas County FROM: Residential Low Medium

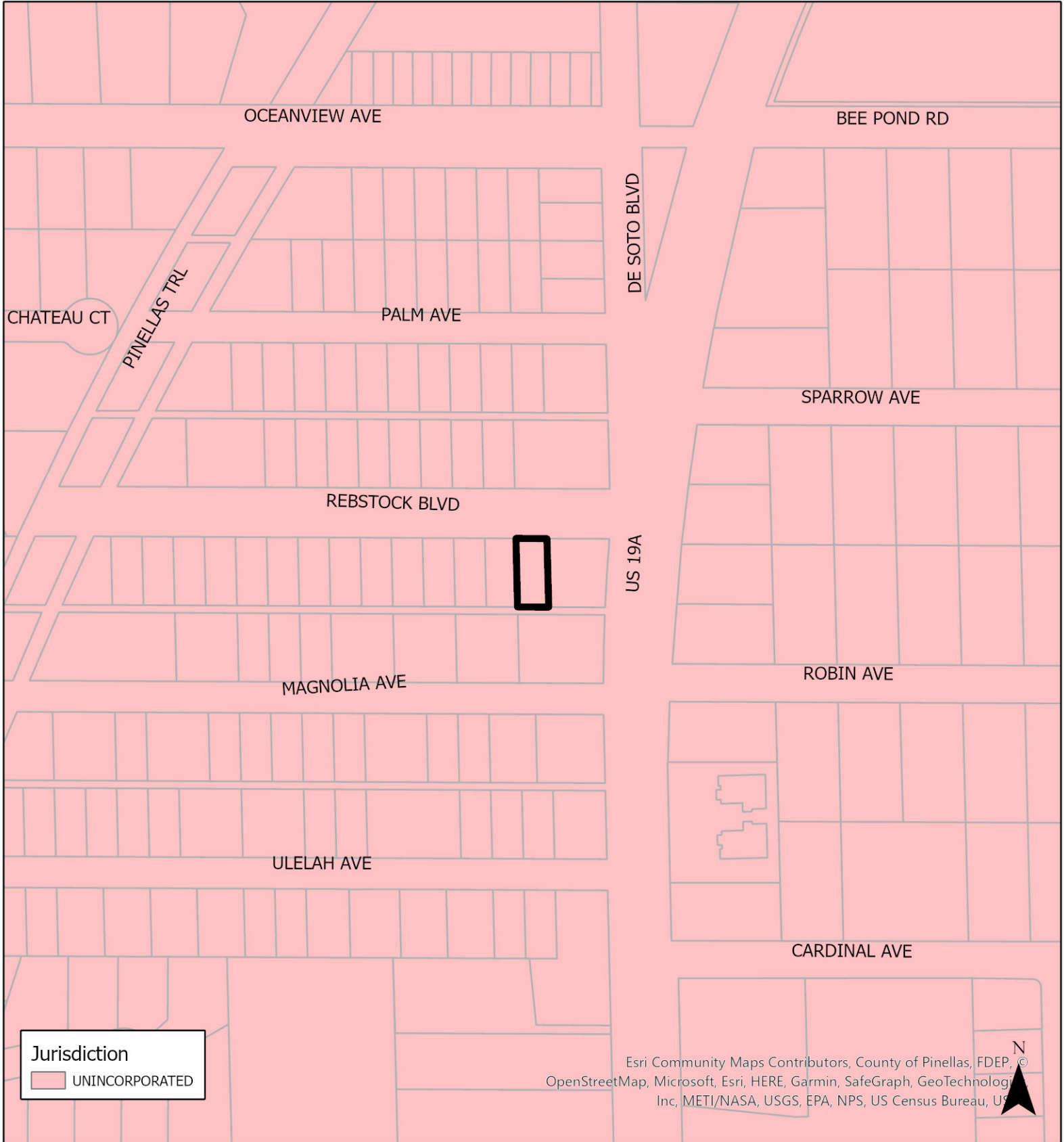
AREA: 0.13 acres

TO: Office



Case CW22-19

Map 2: Jurisdictional Map



JURISDICTION: Pinellas County FROM: Residential Low Medium

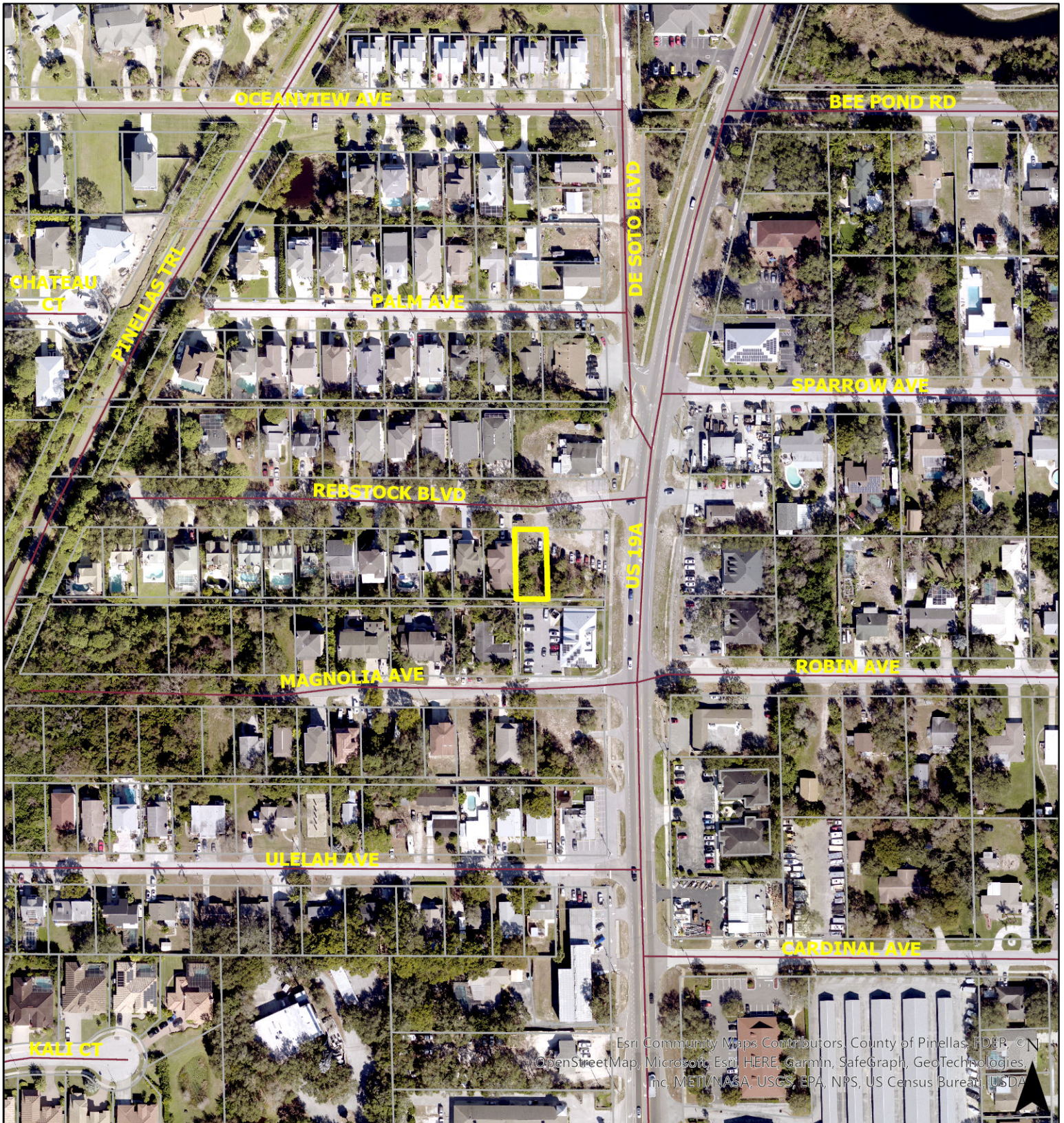
AREA: 0.13 acres

TO: Office



Case CW22-19

Map 3: Aerial Map



Esri Community Maps Contributors, County of Pinellas, FDER, © N
OpenStreetMap, Microsoft, Esri, HERE, Garmin, SafeGraph, GeoTechnologies
Inc, METI/NASA, USGS, EPA, NPS, US Census Bureau, USDA

JURISDICTION: Pinellas County **FROM:** Residential Low Medium

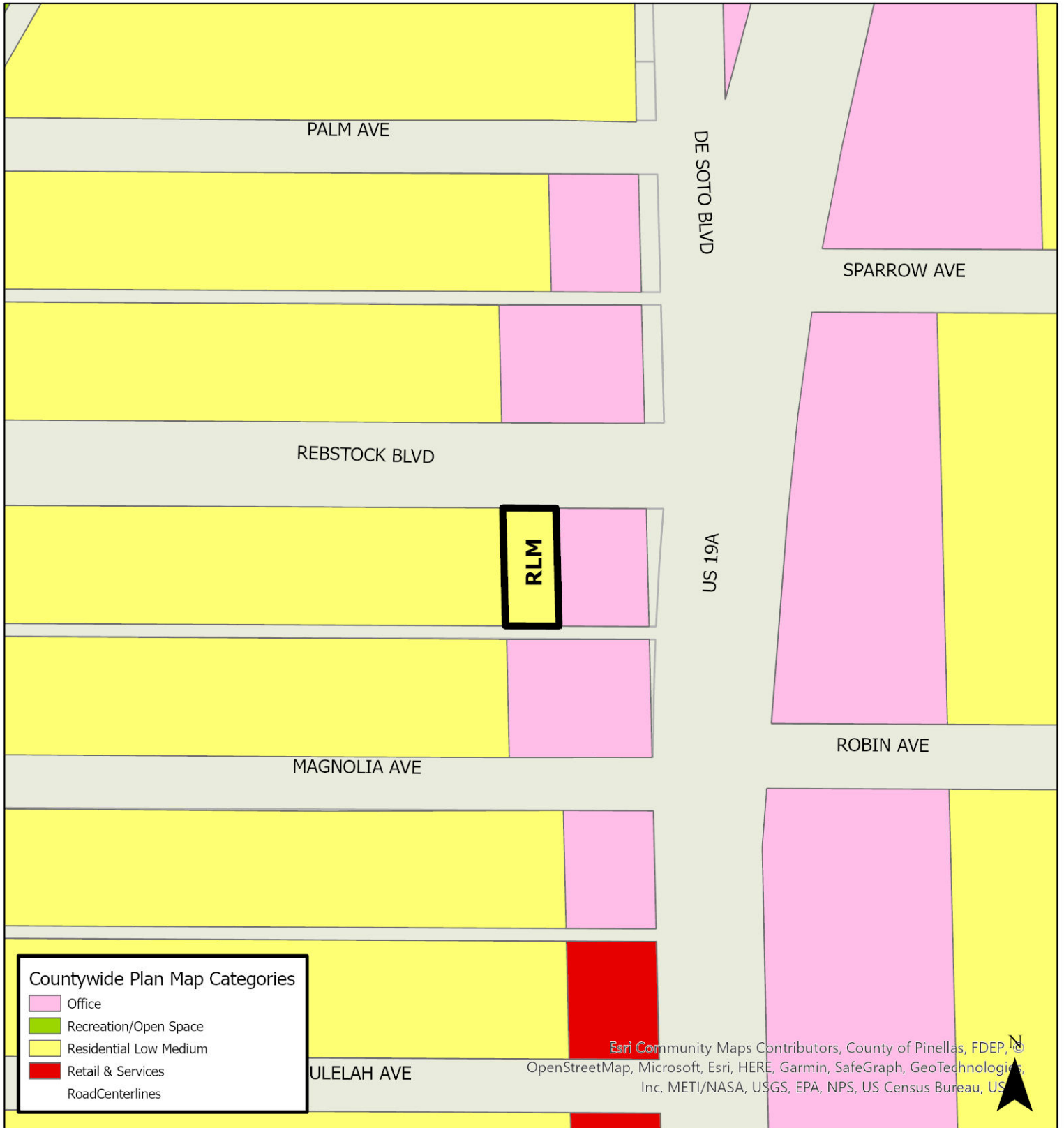
AREA: 0.13 acres

TO: Office



Case CW22-19

Map 4: Current Countywide Plan Map



JURISDICTION: Pinellas County FROM: Residential Low Medium

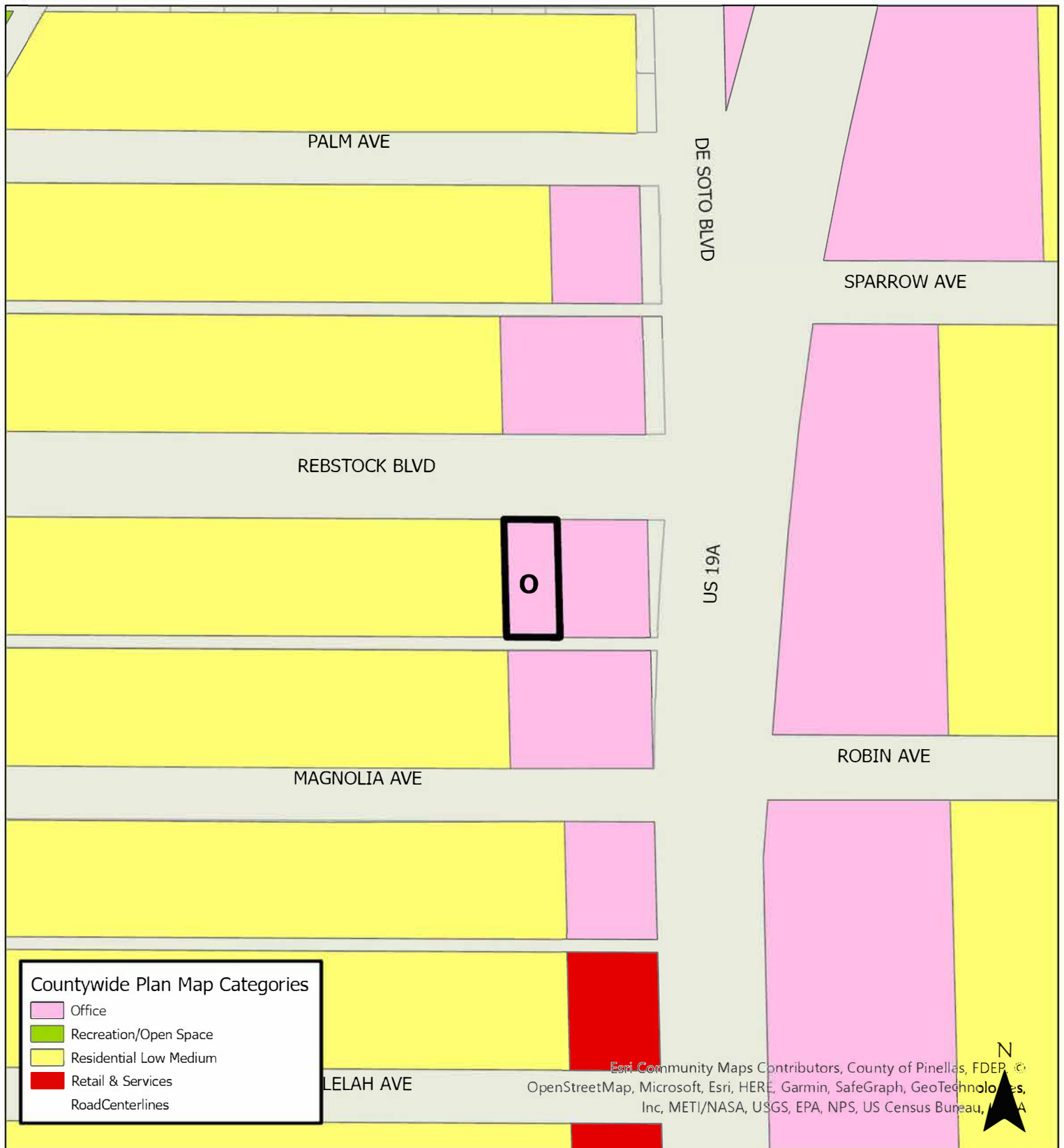
AREA: 0.13 acres

TO: Office



Case CW22-19

Map 5: Proposed Countywide Plan Map



JURISDICTION: Pinellas County FROM: Residential Low Medium

AREA: 0.13 acres

TO: Office

